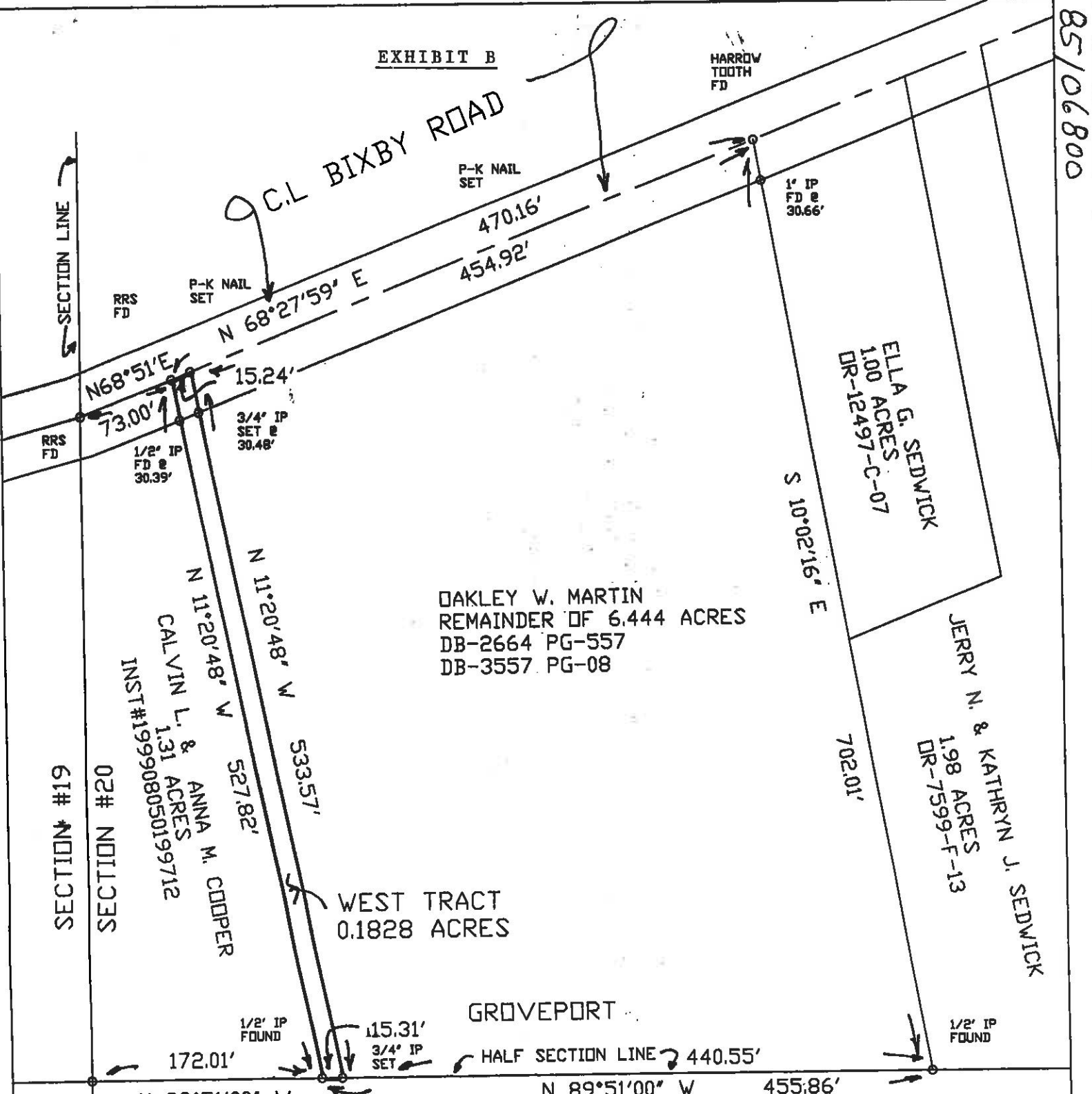


EXHIBIT B

85/06800



OAKLEY W. MARTIN  
 REMAINDER OF 6.444 ACRES  
 DB-2664 PG-557  
 DB-3557 PG-08

CALVIN L. & ANNA M. COPPER  
 1.31 ACRES  
 INST#199908050199712

WEST TRACT  
 0.1828 ACRES

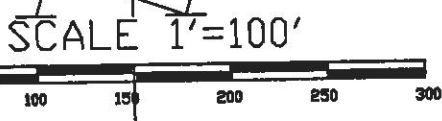
GROVEPORT  
 HALF SECTION LINE 440.55'

SARAH J. SCHMIDT TR. &  
 SCHMIDT DEVELOPMENT CO. LTD.  
 121.587 ACRES  
 DR-30295-C-19  
 INST#199707070041113

STONE  
 FD @  
 SW COR  
 NW1/4  
 SEC-20



SURVEY OF 0.1828 ACRES  
 IN THE NW 1/4 SEC-20, TWP-11, RGE-21,  
 VILLAGE OF GROVEPORT, FRANKLIN CO.,  
 OHIO :  
 FOR  
OAKLEY MARTIN



BASIS OF BEARINGS:  
 SOUTH LINE OF THE NW 1/4 OF  
 SECTION 20, AS N 89°51' W FROM  
 DB-2664 PG-557.



**Louis F Haines**  
 954 Kessler Street  
 Groveport, Ohio 43125  
 Phone 887-2181

HEREBY CERTIFY THE PLAT SHOWN HEREON  
 IS CORRECT AS SURVEYED BY US.  
 DATE: April 10, 2002  
 SIGNED: [Signature]

MADISON Twp. U-44-B