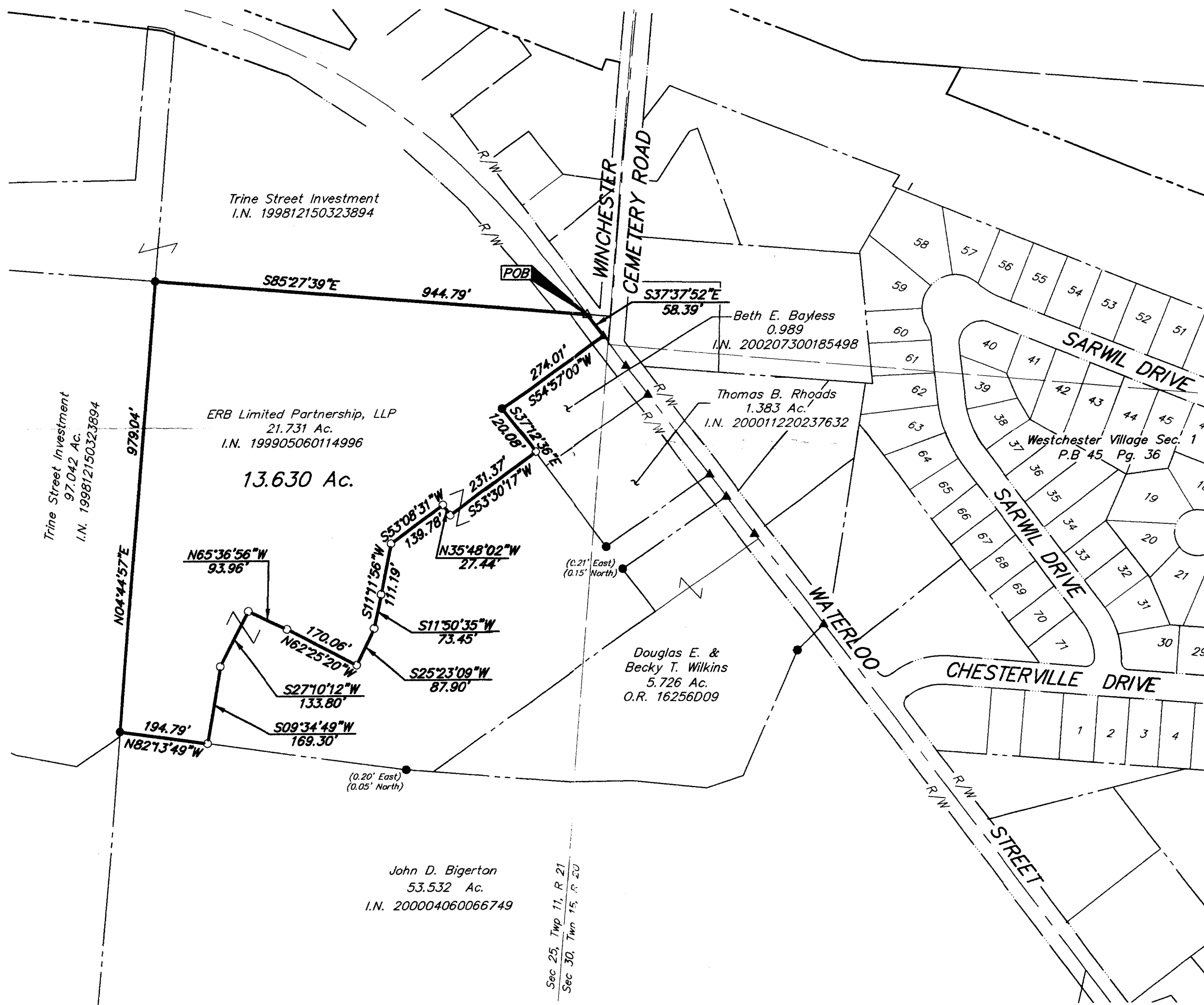


SURVEY OF ACREAGE PARCEL
SECTION 25, TOWNSHIP 11, RANGE 21
CONGRESS LANDS
VILLAGE OF CANAL WINCHESTER, FRANKLIN COUNTY, OHIO



- = MON. FND.
- = I.P. FND.
- = I.P. SET
- = MAG. NAIL FND.
- = MAG. NAIL SET
- ▲ = R.R. SPK. FND.
- △ = R.R. SPK. SET
- = P.K. NAIL FND.

I.P.S Set are 13/16" I.D. Iron pipe w/ cap inscribed EMHT INC



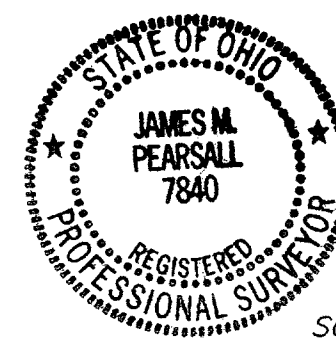
GRAPHIC SCALE
(IN FEET)

BASIS OF BEARINGS: Bearings are based on the centerline of Gender Road as shown on the plans for Gender Road (Road No. 222) on file at the Franklin County Engineer's Department

Surveyed & Prepared
By



ENGINEERS, SURVEYORS, PLANNERS, SCIENTISTS
 EVANS, MECHWART, HAMBLETON & TILTON, INC.
 170 MILL STREET, GAHANNA, OHIO 43230-3036
 TEL: 614-471-5150 • FAX: 614-471-9286



By *James M. Pearsall* 5/16/03
 Professional Surveyor No. 7840

SCALE: 1" = 200'

MAY 15, 2003

G:\PROJECT\20030328\DWG\30328BVI.DWG - O XREFS: - PLOTTED BY JMACLEAN - May 15, 2003 - 2:56 PM