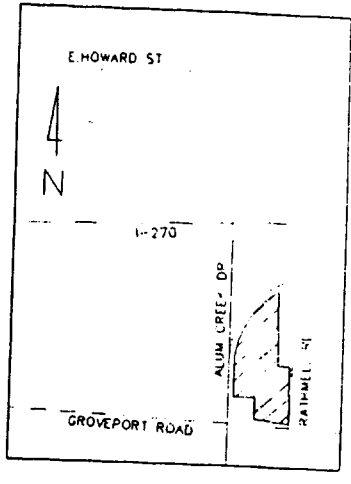
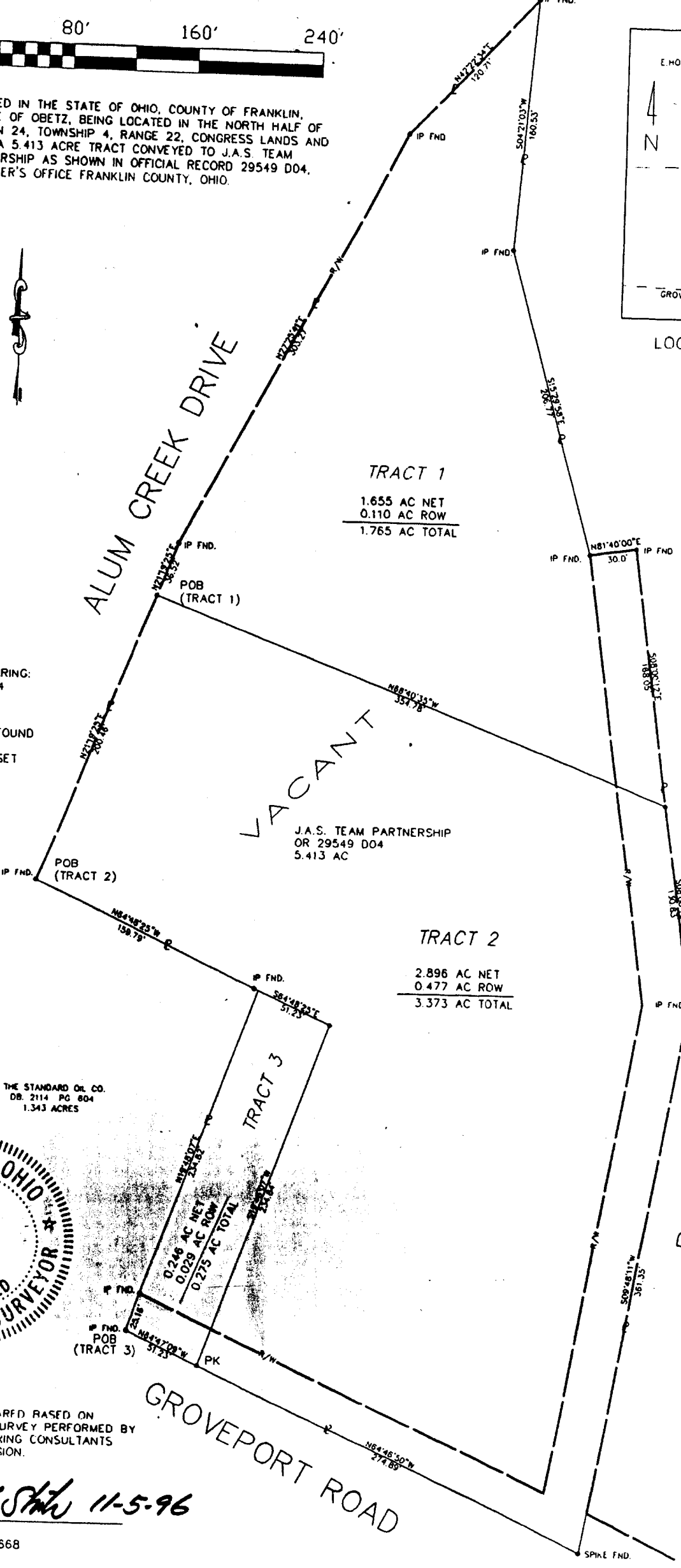


SITUATED IN THE STATE OF OHIO, COUNTY OF FRANKLIN, VILLAGE OF OBETZ, BEING LOCATED IN THE NORTH HALF OF SECTION 24, TOWNSHIP 4, RANGE 22, CONGRESS LANDS AND BEING A 5.413 ACRE TRACT CONVEYED TO J.A.S. TEAM PARTNERSHIP AS SHOWN IN OFFICIAL RECORD 29549 D04, RECORDER'S OFFICE FRANKLIN COUNTY, OHIO.



LOCATION MAP



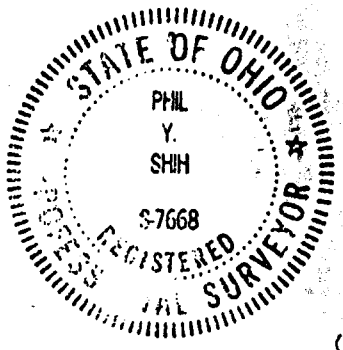
TRACT 1
 1.655 AC NET
 0.110 AC ROW
 1.765 AC TOTAL

TRACT 2
 2.896 AC NET
 0.477 AC ROW
 3.373 AC TOTAL

TRACT 3
 0.246 AC NET
 0.029 AC ROW
 0.275 AC TOTAL

VACANT
 J.A.S. TEAM PARTNERSHIP
 OR 29549 D04
 5.413 AC

THE STANDARD OIL CO.
 DB. 2114 PG 804
 1.343 ACRES



THIS PLAT IS PREPARED BASED ON AN ACTUAL FIELD SURVEY PERFORMED BY COLUMBUS ENGINEERING CONSULTANTS UNDER MY SUPERVISION.

Phil Y Shim 11-5-96

PHIL Y. SHIM, No. 7668

Basis of bearing in this description is the easterly right of way line of Alum Creek Drive being N 21°19'25" E, as shown in Official Record 29549 D04, Recorder's Office, Franklin County, Ohio.

08890018
 84606880
 HMM
 LTH