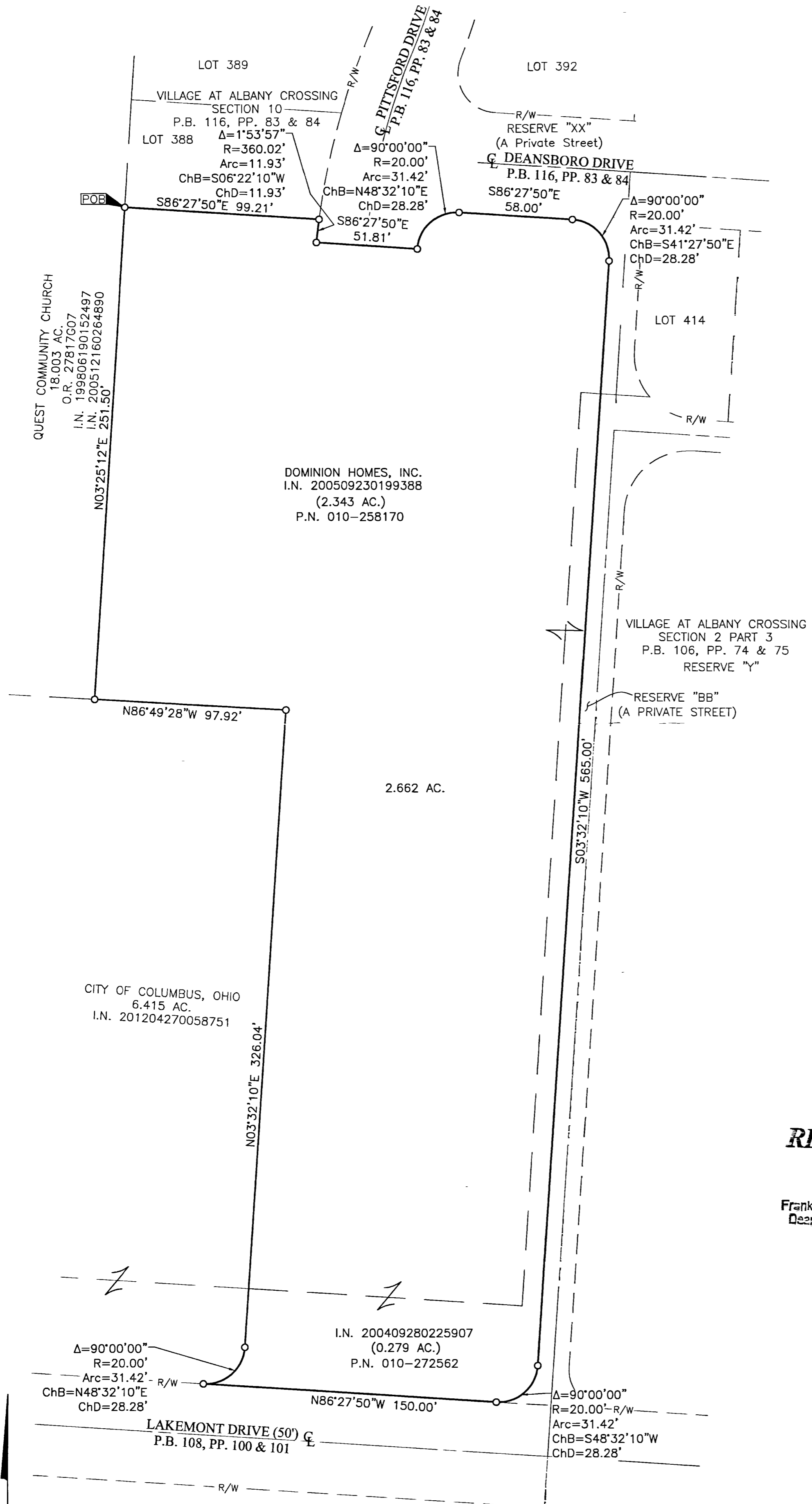


SURVEY OF ACREAGE PARCEL

SECTION 15, QUARTER TOWNSHIP 2, TOWNSHIP 2, RANGE 16

UNITED STATES MILITARY LANDS

CITY OF COLUMBUS, COUNTY OF FRANKLIN, STATE OF OHIO



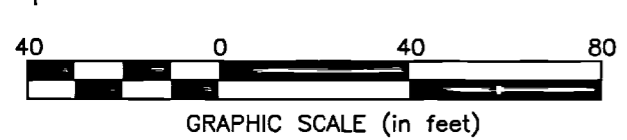
BASIS OF BEARINGS:
 Bearings shown hereon are based on the Ohio State Plane Coordinate System (South Zone) as per NAD83 (1986 Adjustment). Control for bearings was from coordinates of monuments 8824 and 8325, having a bearing of North 86° 29' 28" West, established by the Franklin County Engineering Department, using Global Positioning System procedures and equipment.

o = I.P. SET
 I.P. Set are 13/16" I.D. iron pipe with cap inscribed EMHT INC

RECEIVED
 SEP 03 2014
 Franklin County Engineer
 Dean C. Ringle, P.E., P.S.

By Matthew A. Kirk 8 Aug-14
 Matthew A. Kirk Date
 Professional Surveyor No. 7865

EMHT		Date: August 8, 2014
Evans, Mechwart, Hambleton & Tilton, Inc. Engineers • Surveyors • Planners • Scientists 5500 New Albany Road, Columbus, OH 43054 Phone: 614.775.4500 Toll Free: 888.775.3648 emht.com		Scale: 1" = 40'
		Job No: 2014-1327
		Sheet: 1 of 1
REVISIONS		
MARK	DATE	DESCRIPTION



J:\2014\1327\UNGC\ASHEETS\BOUNDARY\20141327-VS-BNDY.DWG plotted by KIRK, MATTHEW on 8/8/2014 12:17:11 PM last saved by MRRK on 8/8/2014 12:16:49 PM