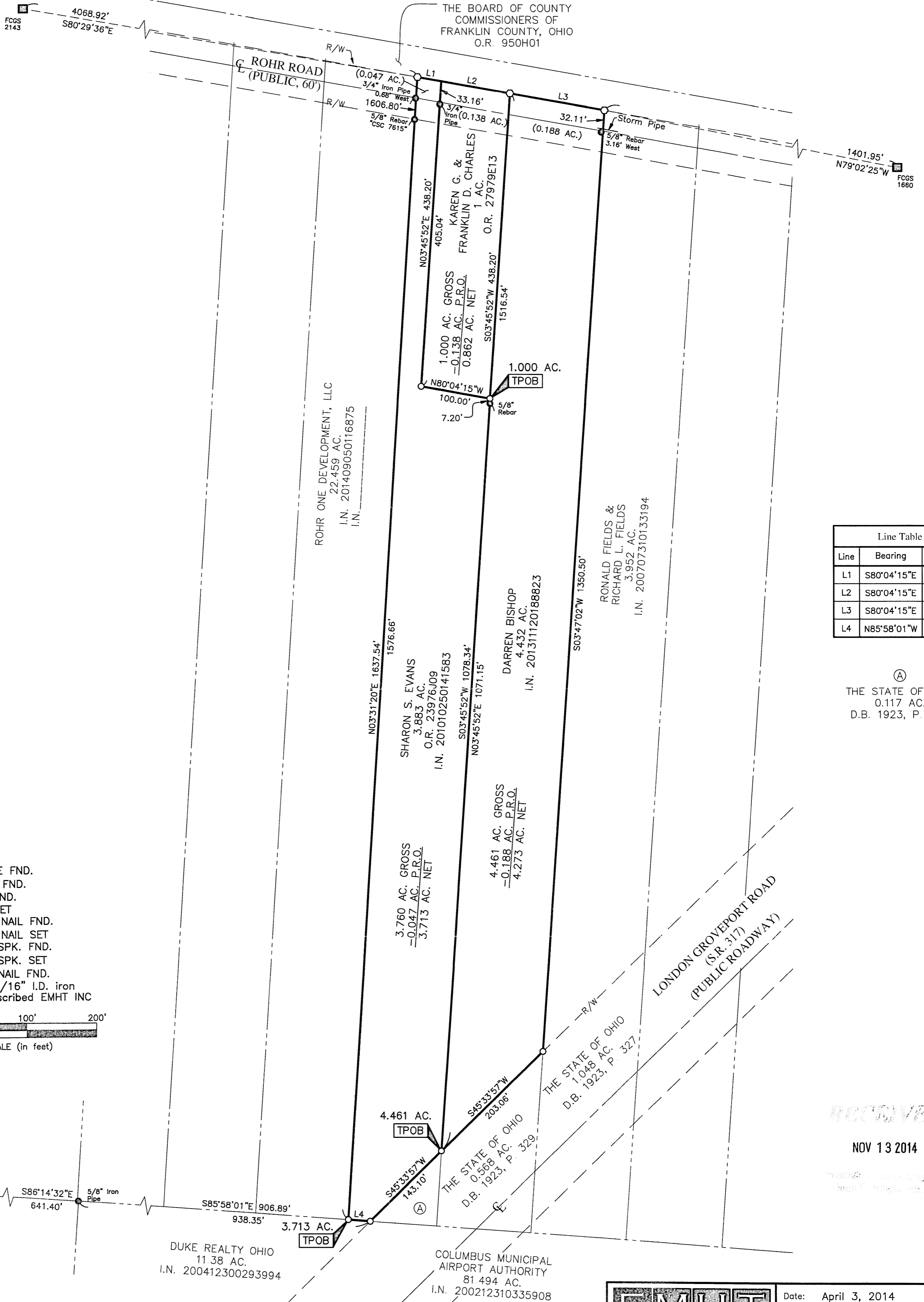


SURVEY OF ACREAGE PARCEL

SECTION 32, TOWNSHIP 11, RANGE 21

CONGRESS LANDS

CITY OF GROVEPORT, FRANKLIN COUNTY, OHIO



Line Table		
Line	Bearing	Distance
L1	S80°04'15\"E	34.55'
L2	S80°04'15\"E	100.00'
L3	S80°04'15\"E	136.59'
L4	N85°58'01\"W	31.47'

Ⓐ
THE STATE OF OHIO
0.117 AC.
D.B. 1923, P. 323

● = STONE FND.
 ■ = MON. FND.
 ○ = I.P. FND.
 ○ = I.P. SET
 ○ = MAG. NAIL FND.
 ○ = MAG. NAIL SET
 ▲ = R.R. SPK. FND.
 ▲ = R.R. SPK. SET
 ◆ = P.K. NAIL FND.
 ◆ = P.K. NAIL SET

I.P. Set are 13/16" I.D. iron pipe with cap inscribed EMHT INC

GRAPHIC SCALE (in feet)

OPUS BUSINESS CENTER
AT RICKENBACKER
P.B. 88, P. 74
LOT 1

RPOB

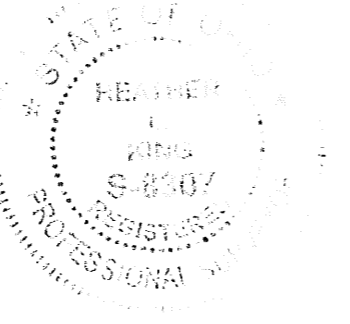
DUKE REALTY OHIO
45.423 AC.
I.N. 200302260056923

DUKE REALTY OHIO
11.38 AC.
I.N. 200412300293994

COLUMBUS MUNICIPAL
AIRPORT AUTHORITY
81.494 AC.
I.N. 200212310335908

BASIS OF BEARINGS:
The bearings herein are based on the Ohio State Plane Coordinate System, South Zone, as per NAD 83 (1986 adjustment). Said bearings originated from a field traverse which was tied to said coordinate system by GPS observations of Franklin County Engineering Department monuments FCGS 9926, and FCGS 9963. The portion of the northerly right-of-way line of Rohr Road, having a bearing of South 80° 07' 54" East and monumented as shown hereon is designated the "basis of bearing" for this survey

SURVEY NOTE:
This survey was prepared using documents of record, prior plats of survey, and observed evidence located by an actual field survey performed in March of 2007 and February of 2014.



By *Heather L. King* 11/12/14
Heather L. King
Professional Surveyor No. 8307
Date

RECEIVED
NOV 13 2014

EMHT Evans, Mechwart, Hambleton & Tilton, Inc. Engineers • Surveyors • Planners • Scientists 5300 New Albany Road, Columbus, OH 43054 Phone: 614.775.4500 Toll Free: 888.775.3648 emht.com	Date: April 3, 2014
	Scale: 1" = 100'
	Job No: 2012-1946
	Sheet: 1 of 1

REVISIONS		
MARK	DATE	DESCRIPTION
TNW	9/15/14	Revised Rohr Road location