



Evans, Mechwart, Hambleton & Tilton, Inc.
 Engineers • Surveyors • Planners • Scientists
 5500 New Albany Road, Columbus, OH 43054
 Phone: 614.775.4500 Toll Free: 888.775.3648
 emht.com

SURVEY OF ACREAGE PARCEL

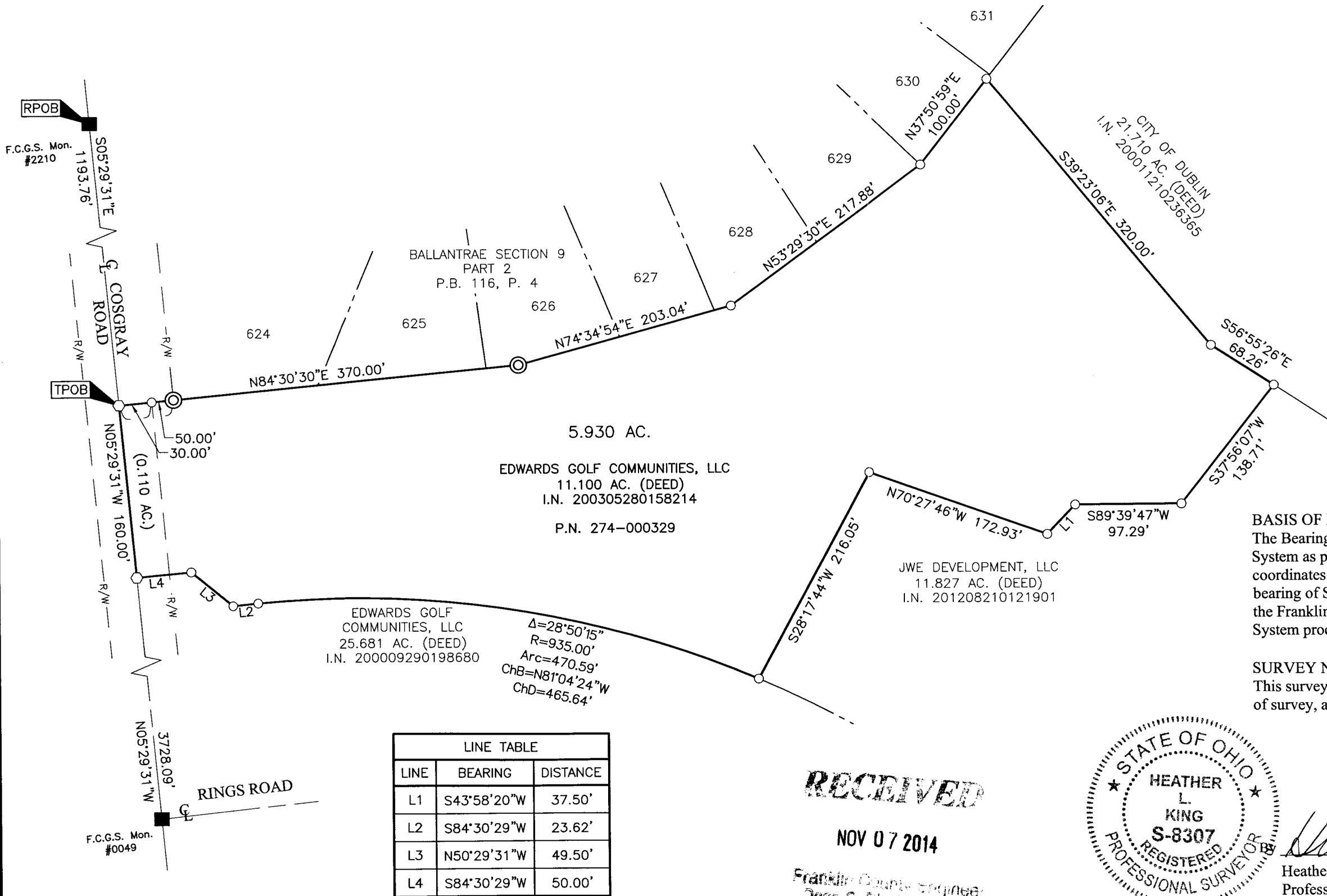
VIRGINIA MILITARY SURVEY 6953

CITY OF DUBLIN, COUNTY OF FRANKLIN, STATE OF OHIO

Date: October 24, 2014

Scale: 1" = 100'

Job No: 2014-1720



- ⊙ = P.M. SET
- = STONE FND.
- = MON. FND.
- = I.P. FND.
- = I.P. SET
- = MAG. NAIL FND.
- = MAG. NAIL SET
- ▲ = R.R. SPK. FND.
- △ = R.R. SPK. SET
- ◆ = P.K. NAIL FND.

I.P. Set are 13/16" I.D. iron pipe with cap inscribed EMHT INC
 P.M. Set are 1" diameter, 30" long solid iron pin with cap inscribed EMHT INC

GRAPHIC SCALE (in feet)

BASIS OF BEARINGS:
 The Bearings shown hereon are based on the Ohio State Plane Coordinate System as per NAD83 (1986 Adjustment). Control for bearings was from coordinates of F.C.G.S. Monument Number 5536 and 7752, having a bearing of South 85° 44' 20" East, between said Monuments, established by the Franklin County Engineering Department, using Global Positioning System procedures and equipment.

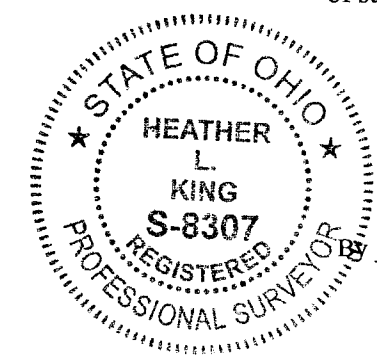
SURVEY NOTE:
 This survey was prepared using documents of record, prior plats of survey, and observed evidence located by an actual field survey.

LINE TABLE		
LINE	BEARING	DISTANCE
L1	S43°58'20"W	37.50'
L2	S84°30'29"W	23.62'
L3	N50°29'31"W	49.50'
L4	S84°30'29"W	50.00'

RECEIVED

NOV 07 2014

Franklin County Engineer
 Dean C. Angle, P.E., P.S.



Heather L. King 11/5/14
 Heather L. King
 Professional Surveyor No. 8307
 Date