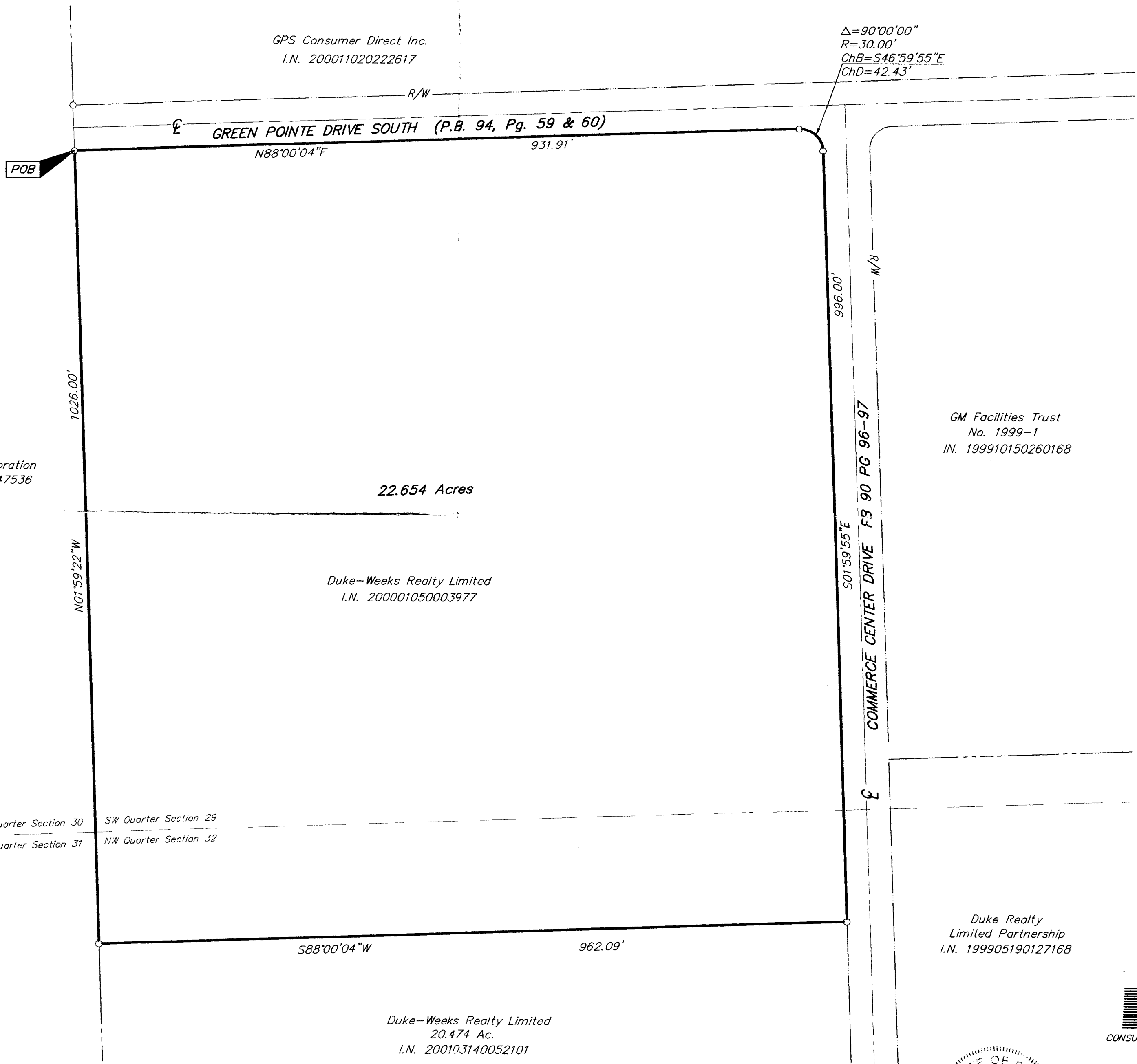
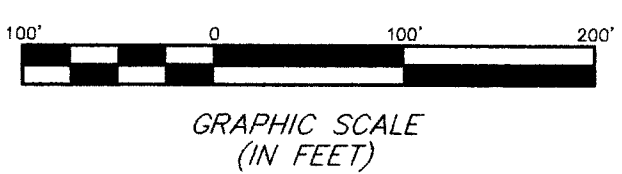


**SURVEY OF ACREAGE PARCEL**  
**SECTION 29 & 32, TOWNSHIP 11, RANGE 21**  
**CONGRESS LANDS**  
**VILLAGE OF GROVEPORT, FRANKLIN COUNTY, OHIO**

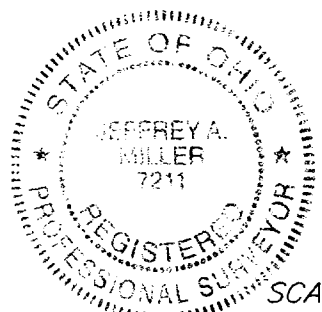


- = STONE FND.
- = MON. FND.
- = I.P. FND.
- = I.P. SET
- = MAG. NAIL FND.
- = MAG. NAIL SET
- ▲ = R.R. SPK. FND.
- △ = R.R. SPK. SET
- ◆ = P.K. NAIL FND.

I.P.S Set are 1 3/16" I.D. Iron pipe W/ cap inscribed EMHT INC



BASIS OF BEARINGS: The bearings herein are based on the plat entitled "Groveport Commerce Center Part 4 Saltzgeber Road Dedication and Easements" of record in Plat Book 97 Pages 85 and 86, Recorder's Office, Franklin County, Ohio.



SURVEYED & PREPARED BY  
**EMHT & INC.**  
 CONSULTING ENGINEERS & SURVEYORS  
 170 MILL STREET  
 GAHANNA, OHIO 43230  
 (614) 471-5150

By *Jeffrey A. Miller* 1-29-03  
 Professional Surveyor No. 7211  
 SCALE: 1" = 100'  
 JANUARY 29, 2003

Q:\PROJECT\20030103\DWG\30103BV.DWG - 0 XREFS: - PLOTTED BY TBAXTER - January 28, 2003 - 3:21 PM