

G-2-L



Evans, Mechwart, Hambleton & Tilton, Inc.
Engineers • Surveyors • Planners • Scientists
5500 New Albany Road, Columbus, OH 43054
Phone: 614.775.4500 Toll Free: 888.775.3648
emht.com

SURVEY OF ACREAGE PARCEL

SECTION 16, TOWNSHIP 5, RANGE 22

REFUGEE LANDS

CITY OF COLUMBUS, COUNTY OF FRANKLIN, STATE OF OHIO

Date: September 9, 2014

Scale: 1" = 30'

Job No. 2014-1470

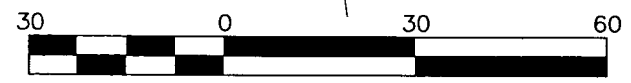
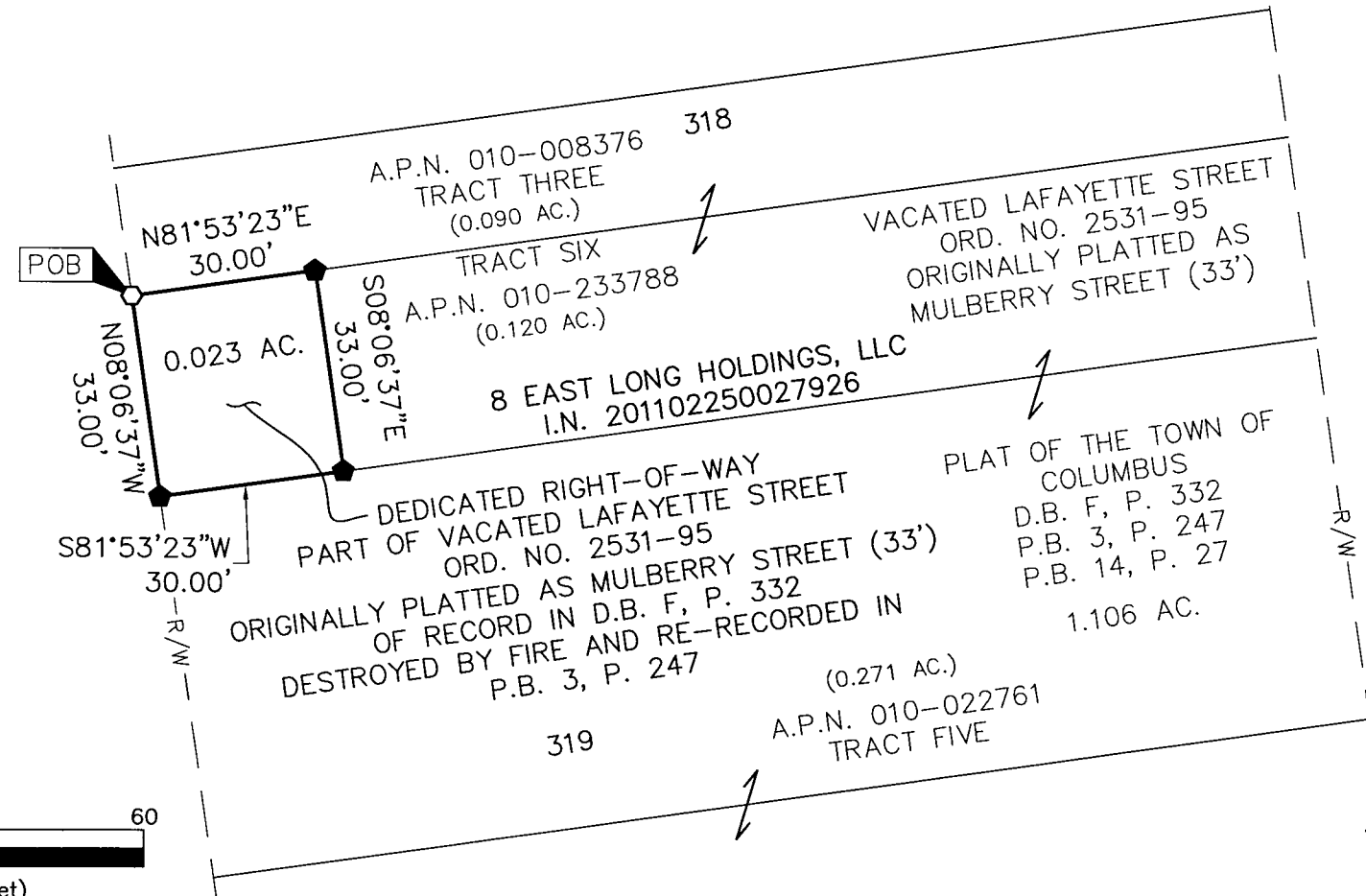
1/2

RECEIVED

SEP 09 2014

Franklin County Engineer
Dean C. Ringle, P.E., P.S.

NORTH HIGH STREET (PUBLIC, 100' R/W)



GRAPHIC SCALE (in feet)

G-2-2



Evans, Mechwart, Hambleton & Tilton, Inc.
Engineers • Surveyors • Planners • Scientists
5500 New Albany Road, Columbus, OH 43054
Phone: 614.775.4500 Toll Free: 888.775.3648

emht.com

SURVEY OF ACREAGE PARCEL

SECTION 16, TOWNSHIP 5, RANGE 22

REFUGEE LANDS

CITY OF COLUMBUS, COUNTY OF FRANKLIN, STATE OF OHIO

Date: September 9, 2014

Scale: 1" = 30'

Job No. 2014-1470

2/2

SURVEY NOTE:

This survey was prepared using documents of record, prior plats of survey, and observed evidence located by an actual field survey.

- = STONE FND.
- = MON. FND.
- = I.P. FND.
- = I.P. SET
- ◆ = MAG. NAIL FND.
- ◇ = MAG. NAIL SET
- ▲ = R.R. SPK. FND.
- △ = R.R. SPK. SET
- ◆ = P.K. NAIL FND.

I.P. Set are 13/16" I.D. iron pipe with cap inscribed EMHT INC

BASIS OF BEARING:

The bearings are based on the Ohio State Plane Coordinate System, South Zone, NAD83 (1986). Said bearings originated from a field traverse which was tied (referenced) to said coordinate system by GPS observations and observations of selected Franklin County Engineering Department monuments 4-83 and 13-83. The portion of the right-of-way line of East Long Street, having a bearing of South 81° 53' 23" West, is designated the "basis of bearing" for this survey.

RECEIVED

SEP 09 2014

Franklin County Engineer
Dean C. Ringle, P.E., P.S.

By Matthew A. Kirk
Matthew A. Kirk
Professional Surveyor No. 7865

9 SEP 14
Date