

# Lot Split Exhibit ~ 1.264 Ac.

City of Columbus, Franklin County, Ohio  
Survey No. 6641 of the Virginia Military District

○ = Iron pin set  
[M] = Monument Found

Meijer Stores Limited Partnership  
I.N. 200102220035778  
Orig. 36.418 Ac.

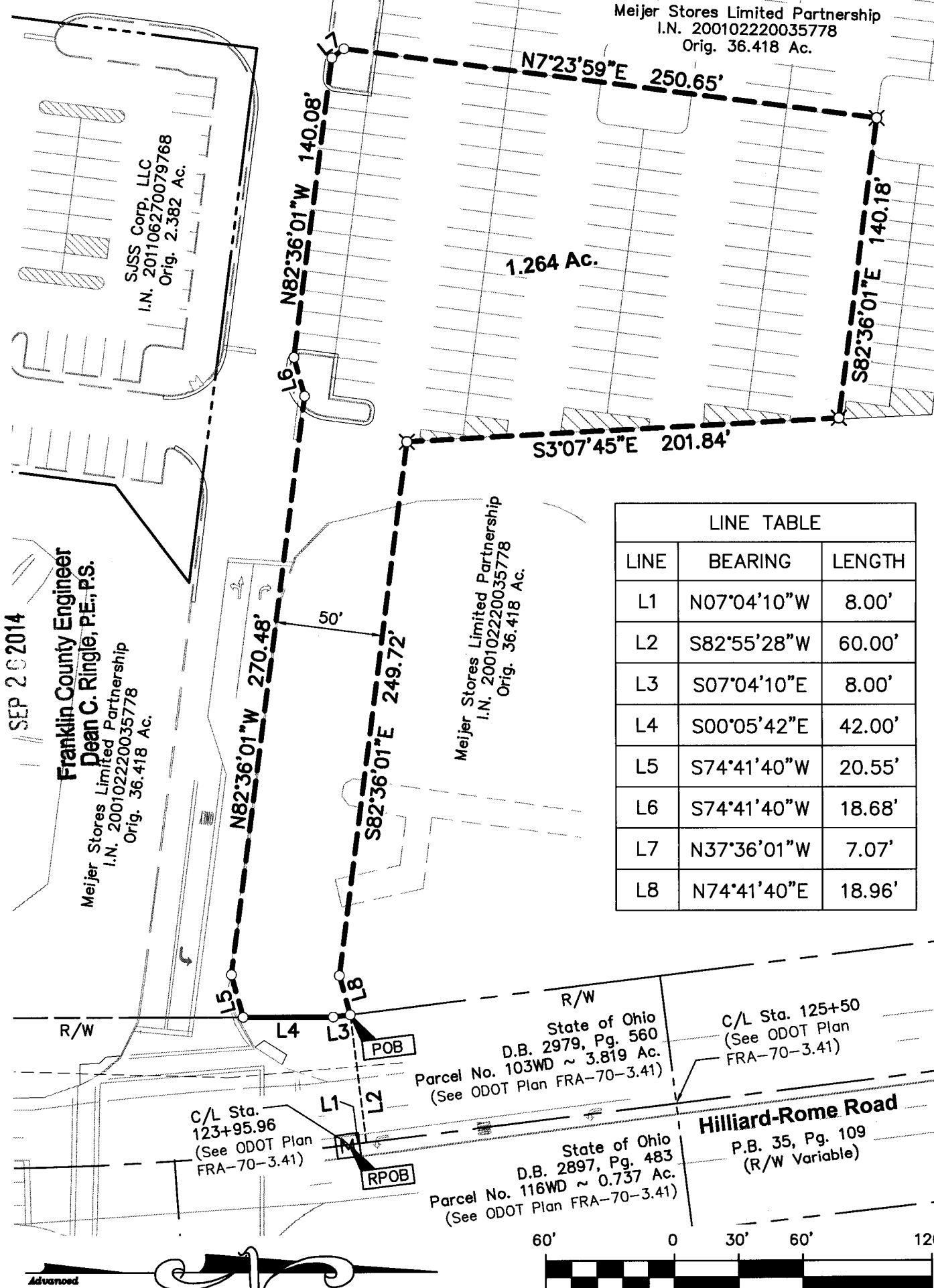
SUSS Corp, LLC  
I.N. 201106270079768  
Orig. 2.382 Ac.

Franklin County Engineer  
Dean C. Ringle, P.E., P.S.

Meijer Stores Limited Partnership  
I.N. 200102220035778  
Orig. 36.418 Ac.

Meijer Stores Limited Partnership  
I.N. 200102220035778  
Orig. 36.418 Ac.

LINE TABLE		
LINE	BEARING	LENGTH
L1	N07°04'10"W	8.00'
L2	S82°55'28"W	60.00'
L3	S07°04'10"E	8.00'
L4	S00°05'42"E	42.00'
L5	S74°41'40"W	20.55'
L6	S74°41'40"W	18.68'
L7	N37°36'01"W	7.07'
L8	N74°41'40"E	18.96'

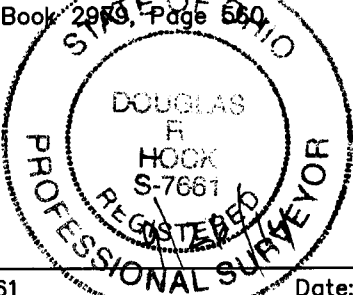


RECEIVED

SEP 20 2014

Z:\14-0012-412\SURVEY\0012-412 bound rev2.dwg Layout1 Sep 26, 2014 - 9:40:57am dbic

Bearings are based on the Ohio State Plane Coordinate System per NAD83, South Zone (1986 Adj.). A bearing of N 07° 04' 10" W was held for the east line of Parcel No. 103WD recorded in Deed Book 2979, Page 560.



Douglas R. Hock, P.S. 7661

Date:

R/W  
State of Ohio  
D.B. 2979, Pg. 560  
Parcel No. 103WD ~ 3.819 Ac.  
(See ODOT Plan FRA-70-3.41)

C/L Sta. 125+50  
(See ODOT Plan FRA-70-3.41)

Hilliard-Rome Road  
P.B. 35, Pg. 109  
(R/W Variable)

State of Ohio  
D.B. 2897, Pg. 483  
Parcel No. 116WD ~ 0.737 Ac.  
(See ODOT Plan FRA-70-3.41)

60' 0 30' 60' 120'

1" = 60'

DRAWN BY: BCK	JOB NO.: 14-0012-412
DATE: 09/03/2014	CHECKED BY: DRB

422 Beecher Road  
Gahanna, Ohio 43230  
ph 614.428.7750  
fax 614.428.7755

ADVANCED  
CIVIL DESIGN  
ENGINEERS SURVEYORS