

RECEIVED

AUG 29 2014

I-9-A

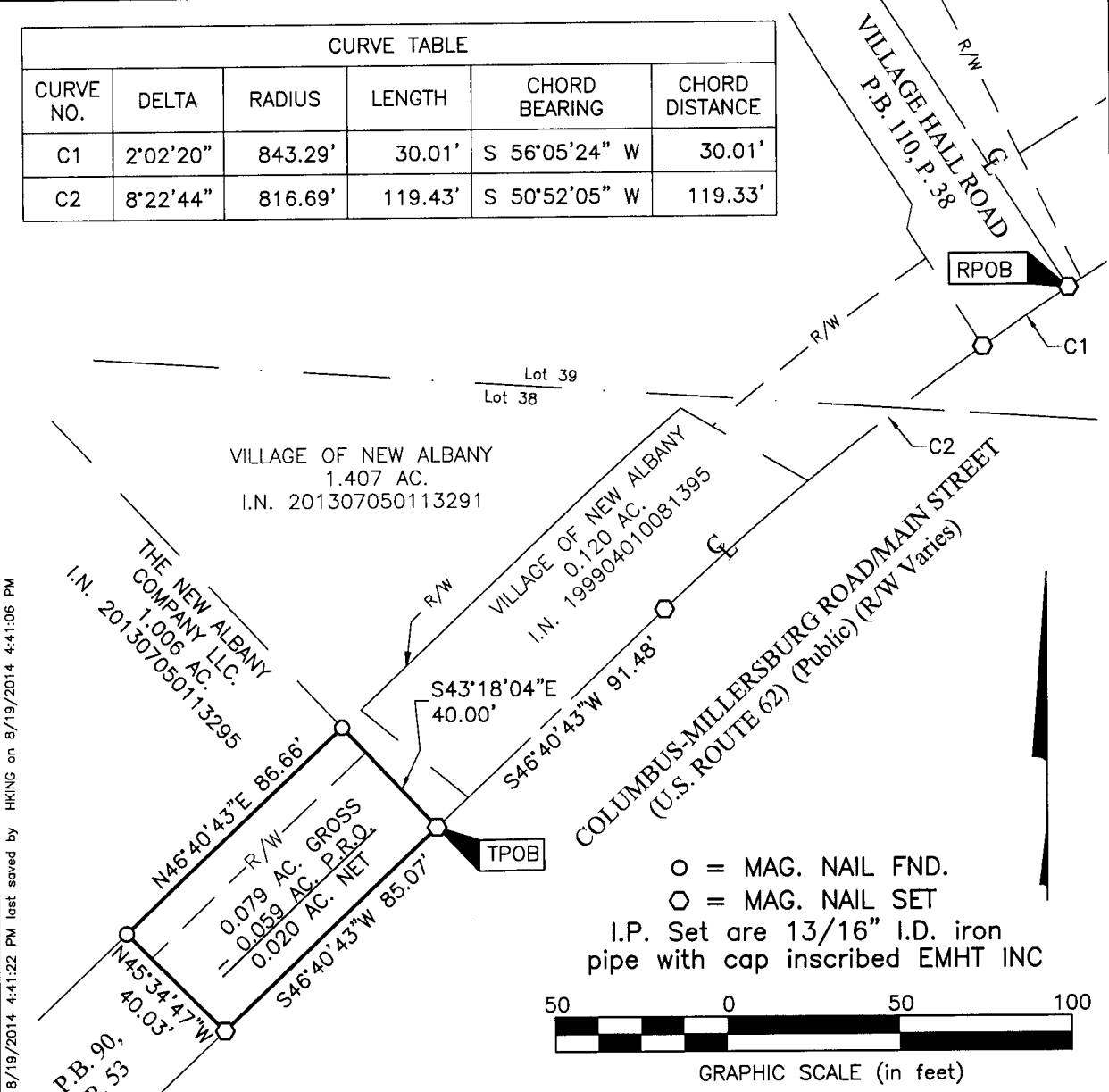
Franklin County Engineer

Deep C. Pingo, P.E., P.S.
EMHT
 Evans, Mechwart, Hambleton & Tilton, Inc.
 Engineers • Surveyors • Planners • Scientists
 5500 New Albany Road, Columbus, OH 43054
 Phone: 614.775.4500 Toll Free: 888.775.3648
 emht.com

SURVEY OF ACREAGE PARCEL
 LOT 38, QUARTER TOWNSHIP 4, TOWNSHIP 2, RANGE 16
 UNITED STATES MILITARY LANDS
 CITY OF NEW ALBANY, COUNTY OF FRANKLIN, STATE OF OHIO

Date: August 19, 2014 Job No. 2012-1071 Scale: 1" = 50'

CURVE TABLE					
CURVE NO.	DELTA	RADIUS	LENGTH	CHORD BEARING	CHORD DISTANCE
C1	2°02'20"	843.29'	30.01'	S 56°05'24" W	30.01'
C2	8°22'44"	816.69'	119.43'	S 50°52'05" W	119.33'



BASIS OF BEARINGS:

Bearings are based on the Ohio State Plane Coordinate System South Zone per NAD83 (1986 Adjustment). Control for bearings was from coordinates of monuments FRANK 78 and FRANK 178, established by the Franklin County Engineering Department using Global Positioning System procedures and equipment, with a bearing of North 53° 09' 04" West for a portion of Market Street as depicted in that subdivision entitled "New Albany County Club Section 19", of record in Plat Book 101, Page 21, Recorder's Office, Franklin County, Ohio.

SURVEY NOTE:

This survey was prepared using documents of record, prior plats of survey, and observed evidence located by an actual field survey.



By Heather L. King Date 8/22/14
 Heather L. King Professional Surveyor No. 8307

J:\2012\1071\DWG\04SHEETS\BOUNDARY\20121071-VS-BNDY-06.DWG plotted by KING, HEATHER on 8/19/2014 4:41:22 PM last saved by HKING on 8/19/2014 4:41:06 PM Xrefs: