



Evans, Mechwart, Hambleton & Tilton, Inc. Engineers • Surveyors • Planners • Scientists 5500 New Albany Road, Columbus, OH 43054 Phone: 614.775.4500 Toll Free: 888.775.3648 emht.com

SURVEY OF ACREAGE PARCEL

QUARTER TOWNSHIP 1, TOWNSHIP 2 RANGE 18

UNITED STATES MILITARY LANDS

CITY OF COLUMBUS, COUNTY OF FRANKLIN, STATE OF OHIO

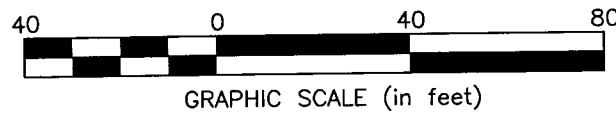
Date: September 22, 2014

Scale: 1" = 40'

Job No: 2013-0183

- = STONE FND.
- = MON. FND.
- = 3/4" I.P. FND.
- = I.P. SET
- = MAG. NAIL FND.
- = MAG. NAIL SET
- ▲ = R.R. SPK. FND.
- △ = R.R. SPK. SET
- = P.K. NAIL FND.

I.P. Set are 13/16" I.D. iron pipe with cap inscribed EMHT INC

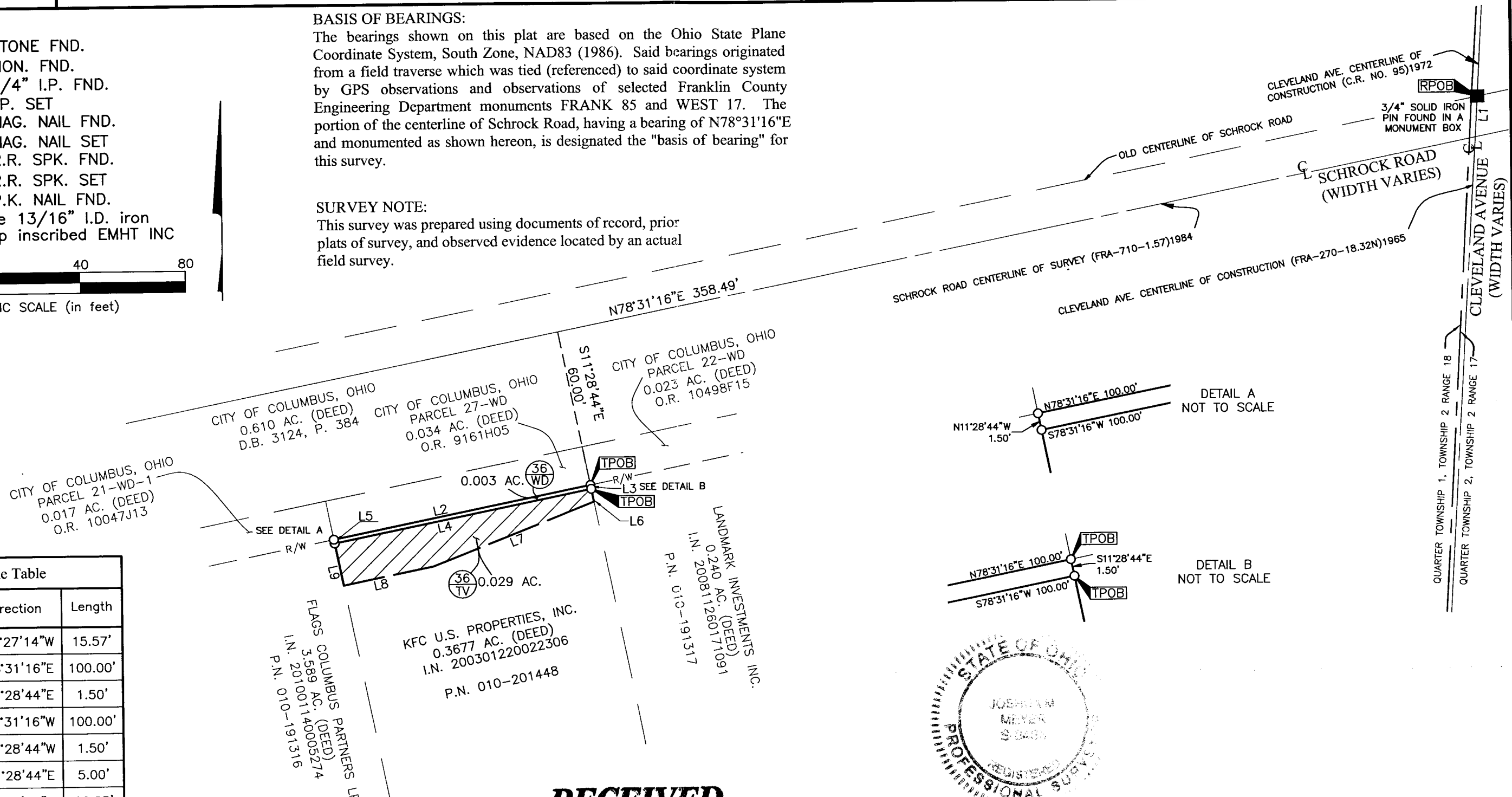


BASIS OF BEARINGS:

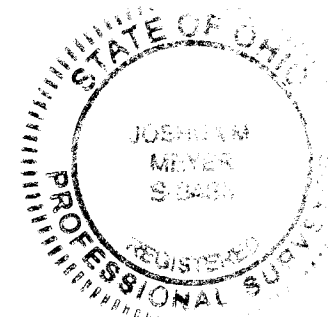
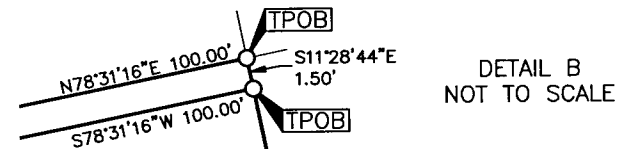
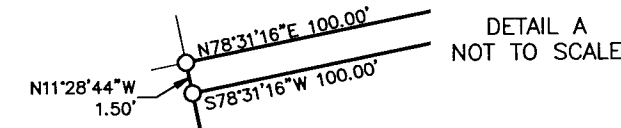
The bearings shown on this plat are based on the Ohio State Plane Coordinate System, South Zone, NAD83 (1986). Said bearings originated from a field traverse which was tied (referenced) to said coordinate system by GPS observations and observations of selected Franklin County Engineering Department monuments FRANK 85 and WEST 17. The portion of the centerline of Schrock Road, having a bearing of N78°31'16"E and monumented as shown hereon, is designated the "basis of bearing" for this survey.

SURVEY NOTE:

This survey was prepared using documents of record, prior plats of survey, and observed evidence located by an actual field survey.



Line Table		
Line Number	Direction	Length
L1	S03°27'14"W	15.57'
L2	N78°31'16"E	100.00'
L3	S11°28'44"E	1.50'
L4	S78°31'16"W	100.00'
L5	N11°28'44"W	1.50'
L6	S11°28'44"E	5.00'
L7	S68°29'40"W	66.05'
L8	S78°31'16"W	34.96'
L9	N11°28'44"W	16.50'



RECEIVED

SEP 30 2014

Franklin County Engineer
Dean C. Ringle, P.E., P.S.

By *J. M. Meyer*
Joshua M. Meyer
Professional Surveyor No. 8485

9-22-2014
Date

J:\20130183\DWG\04SHEETS\BOUNDARY\20130183-VS-BNDY-36.DWG plotted by KING, BRANDON on 9/22/2014 12:19:33 PM last saved by BRKING on 9/22/2014 12:19:31 PM