



Evans, Mechwart, Hambleton & Tilton, Inc.
 Engineers • Surveyors • Planners • Scientists
 5500 New Albany Road, Columbus, OH 43054
 Phone: 614.775.4500 Toll Free: 888.775.3648
 emht.com

SURVEY OF ACREAGE PARCEL

QUARTER TOWNSHIP 1, TOWNSHIP 2 RANGE 18

UNITED STATES MILITARY LANDS

CITY OF COLUMBUS, COUNTY OF FRANKLIN, STATE OF OHIO

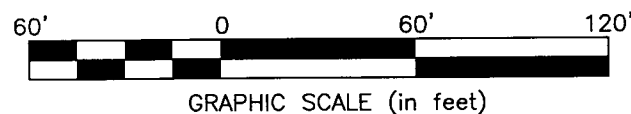
Date: September 22, 2014

Scale: 1" = 60'

Job No: 2013-0183

- = STONE FND.
- = MON. FND.
- = 3/4" I.P. FND.
- = I.P. SET
- ◆ = MAG. NAIL FND.
- = MAG. NAIL SET
- ▲ = R.R. SPK. FND.
- △ = R.R. SPK. SET
- ◆ = P.K. NAIL FND.

I.P. Set are 13/16" I.D. iron pipe with cap inscribed EMHT INC



BASIS OF BEARINGS:

The bearings shown on this plat are based on the Ohio State Plane Coordinate System, South Zone, NAD83 (1986). Said bearings originated from a field traverse which was tied (referenced) to said coordinate system by GPS observations and observations of selected Franklin County Engineering Department monuments FRANK 85 and WEST 17. The portion of the centerline of Schrock Road, having a bearing of N78°31'16"E and monumented as shown hereon, is designated the "basis of bearing" for this survey.

SURVEY NOTE:

This survey was prepared using documents of record, prior plats of survey, and observed evidence located by an actual field survey.

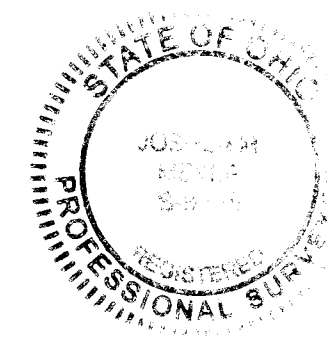
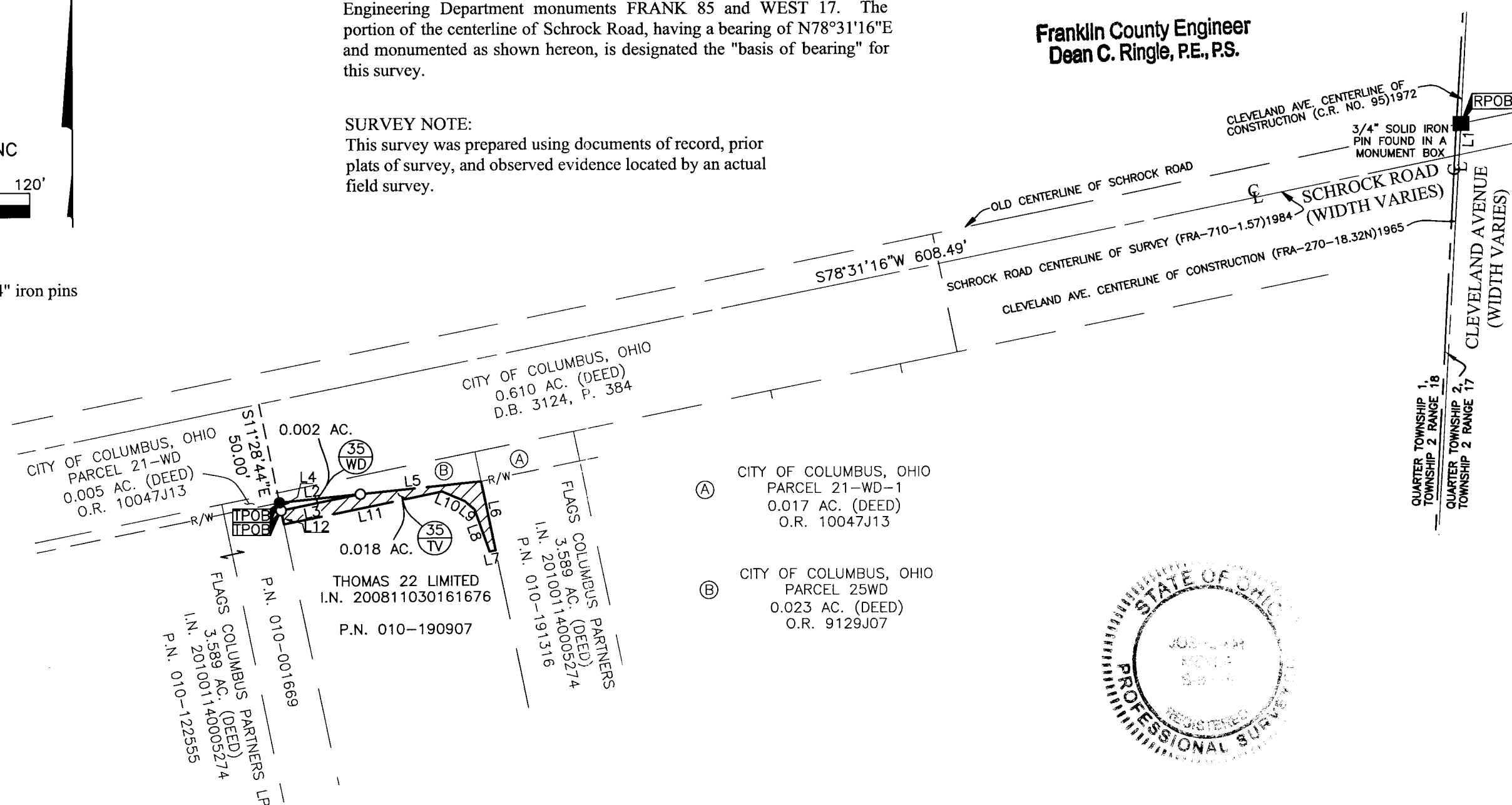
RECEIVED

SEP 30 2014

Franklin County Engineer
 Dean C. Ringle, P.E., P.S.

NOTE:
 All pins found, unless noted otherwise, were 3/4" iron pins capped "BIRD & BULL"
 T - Proposed temporary construction easement
 WD - Proposed right-of-way

Line Table		
Line Number	Direction	Length
L1	S03°27'14"W	15.57'
L2	N84°13'54"E	40.20'
L3	S78°31'16"W	40.00'
L4	N11°28'44"W	4.00'
L5	N84°13'54"E	60.30'
L6	S11°28'44"E	35.00'
L7	S78°31'16"W	3.04'
L8	N19°14'38"W	22.20'
L9	N50°08'19"W	6.40'
L10	N66°29'12"W	12.21'
L11	S78°31'16"W	79.96'
L12	N11°28'44"W	7.00'



By Joshua M. Meyer
 Joshua M. Meyer
 Professional Surveyor No. 8485

9-22-2014
 Date

J:\20130183\DWG\04SHEETS\BOUNDARY\20130183-VS-BNDY-35.DWG plotted by KING, BRANDON on 9/22/2014 1:40:06 PM last saved by BKING on 9/22/2014 1:37:10 PM