



Evans, Mechwart, Hambleton & Tilton, Inc. Engineers • Surveyors • Planners • Scientists 5500 New Albany Road, Columbus, OH 43054 Phone: 614.775.4500 Toll Free: 888.775.3648 emht.com

SURVEY OF ACREAGE PARCEL

QUARTER TOWNSHIP 2, TOWNSHIP 2, RANGE 17
UNITED STATES MILITARY LANDS
CITY OF WESTERVILLE, COUNTY OF FRANKLIN, STATE OF OHIO

Date: September 29, 2014

Job No. 2013-0183

Scale: 1" = 40'

RECEIVED

SEP 29 2014

Franklin County Engineer
Dean C. Ringle, P.E., P.S.

FRANKLIN COUNTY
PARCEL 2-WD
0.092 AC. (DEED)
D.B. 3315, P. 368

RUCKER INTERNATIONAL, LLC
0.558 AC. (DEED)
I.N. 200707120121885
P.N. 080-008075

COUNTY OF FRANKLIN
PARCEL NO. 1-WD
0.595 AC. (DEED)
D.B. 3363, P. 690

WEC 2000A-46 LLC
1.598 AC. (DEED)
I.N. 200010120208035
P.N. 080-008072

BASIS OF BEARINGS:

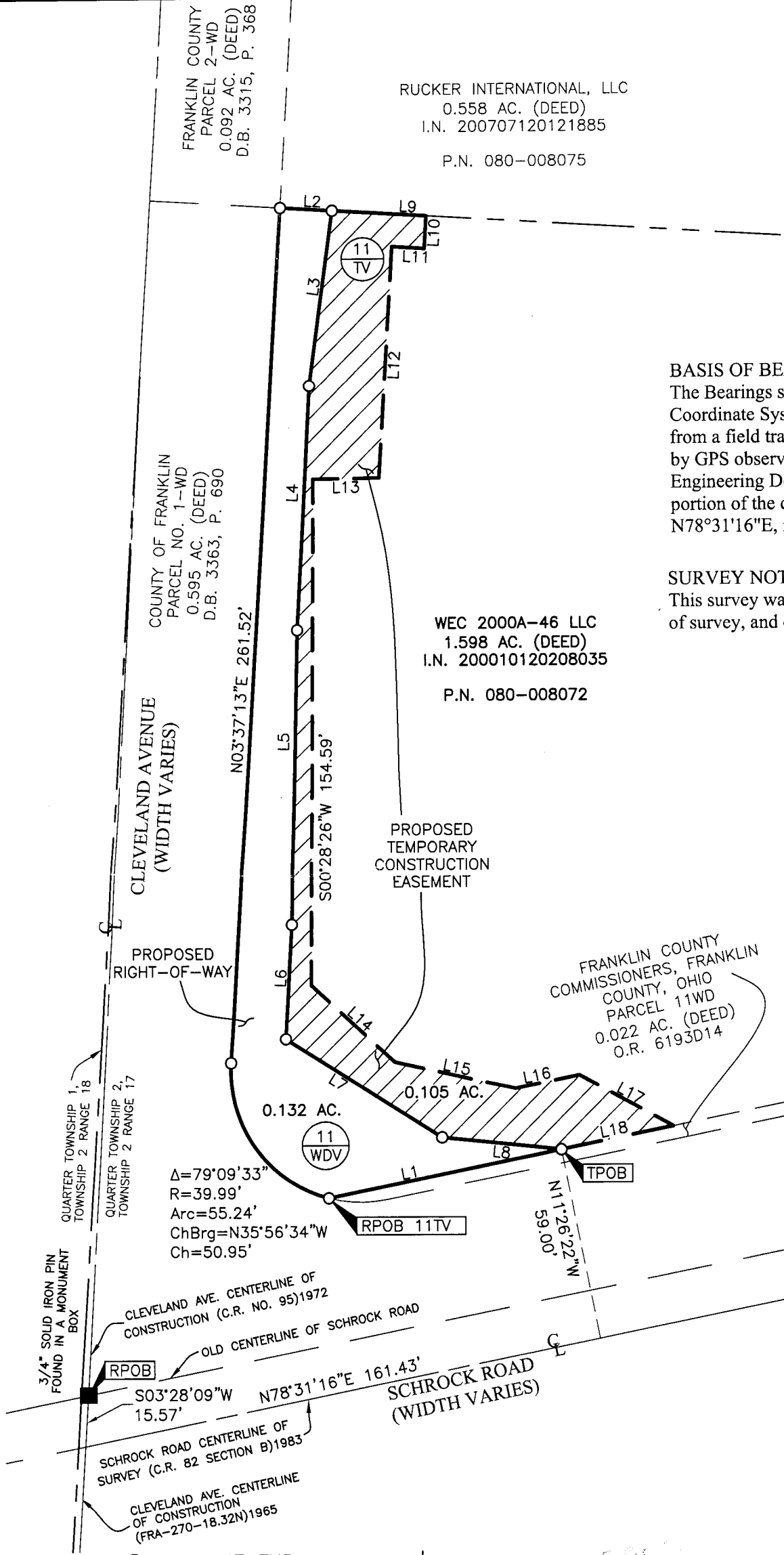
The Bearings shown on this plat are based on the Ohio State Plane Coordinate System, South Zone, NAD83 (1986). Said bearings originated from a field traverse which was tied (referenced) to said coordinate system by GPS observations and observations of selected Franklin County Engineering Department monuments FRANK 85 and WEST 17. The portion of the centerline of Schrock Road, having a bearing of N78°31'16"E, is designated the "basis of bearing" for this survey.

SURVEY NOTE:

This survey was prepared using documents of record, prior plats of survey, and observed evidence located by an actual field survey.

Line Table

Line Number	Direction	Length
L1	S78°31'16"W	72.79'
L2	S86°24'30"E	16.00'
L3	S07°53'01"W	53.81'
L4	S03°13'17"W	74.64'
L5	S01°18'48"W	90.05'
L6	S03°13'21"W	35.00'
L7	S57°47'39"E	56.59'
L8	S84°01'54"E	36.69'
L9	S86°24'30"E	29.00'
L10	S03°37'12"W	10.00'
L11	N86°24'30"W	10.00'
L12	S03°37'13"W	70.54'
L13	S89°22'59"W	20.33'
L14	S47°15'26"E	34.83'
L15	S77°33'05"E	37.82'
L16	N78°31'16"E	20.00'
L17	S61°33'17"E	32.72'
L18	S78°31'16"W	35.09'



- = STONE FND.
- = MON. FND.
- = I.P. FND.
- = I.P. SET
- = MAG. NAIL FND.
- = MAG. NAIL SET
- ▲ = R.R. SPK. FND.
- △ = R.R. SPK. SET
- ◆ = P.K. NAIL FND.

I.P. Set are 13/16" I.D. iron pipe with cap inscribed EMHT INC



GRAPHIC SCALE (in feet)



By *J. Meyer*
Joshua M. Meyer
Professional Surveyor No. 8485

9-29-2014
Date

J:\2013\0183\DWG\04SHEETS\BOUNDARY\20130183-VS-BNDY-11.DWG plotted by KING, BRANDON on 9/29/2014 9:09:54 AM last saved by BIKING on 9/29/2014 9:09:51 AM XREF: 20130183-VS-BNDY-CORR-E-01.DWG & 20130183-CS-RETR-RWAY-E.DWG