



Evans, Mechwart, Hambleton & Tilton, Inc.  
 Engineers • Surveyors • Planners • Scientists  
 5500 New Albany Road, Columbus, OH 43054  
 Phone: 614.775.4500 Toll Free: 888.775.3648  
 emht.com

# SURVEY OF ACREAGE PARCEL

## QUARTER TOWNSHIP 1, TOWNSHIP 2, RANGE 18

### UNITED STATES MILITARY LANDS

### CITY OF COLUMBUS, COUNTY OF FRANKLIN, STATE OF OHIO

Date: September 29, 2014

Scale: 1" = 50'

Job No: 2013-0183

**BASIS OF BEARINGS:**

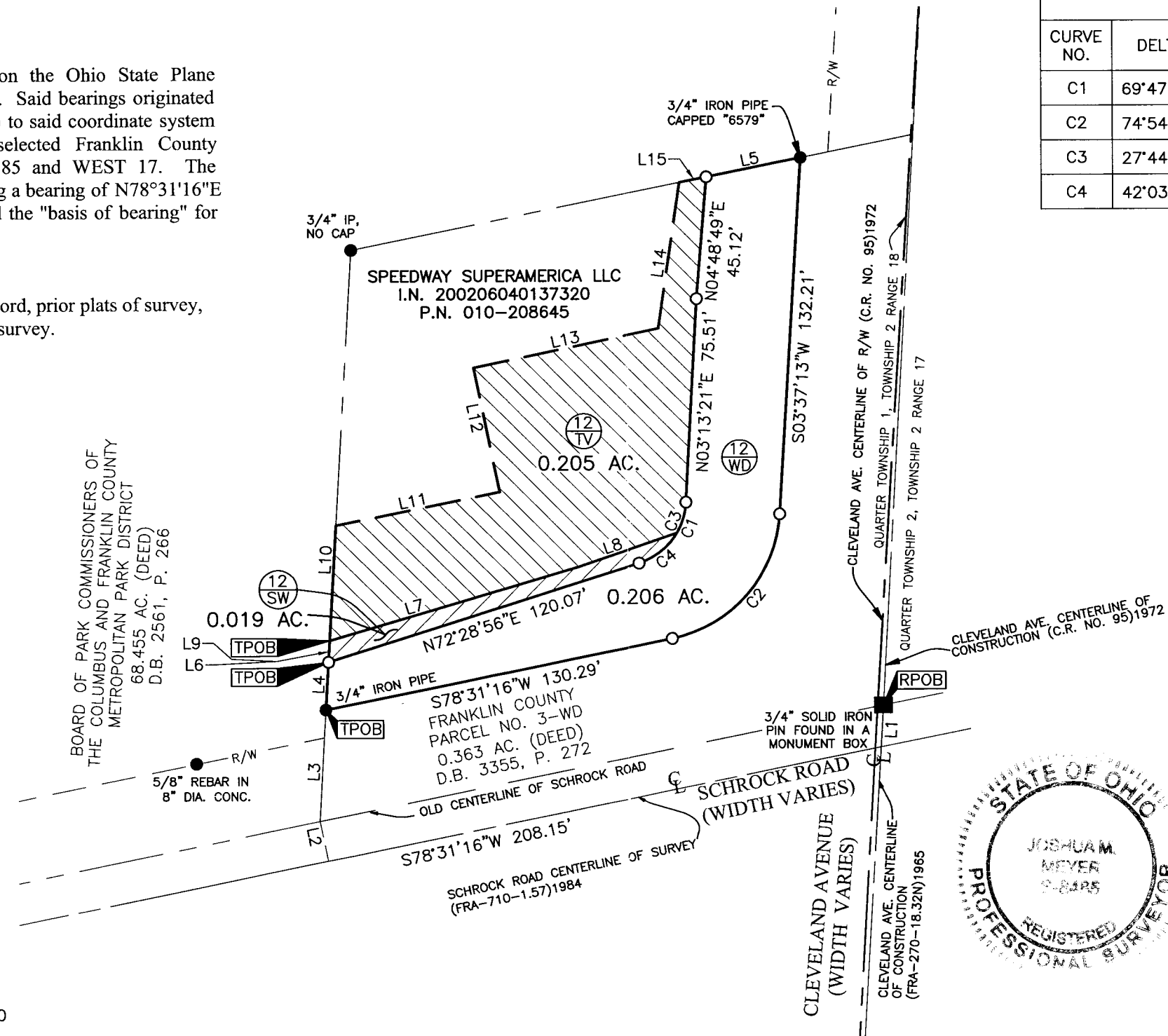
The bearings shown on this plat are based on the Ohio State Plane Coordinate System, South Zone, NAD83 (1986). Said bearings originated from a field traverse which was tied (referenced) to said coordinate system by GPS observations and observations of selected Franklin County Engineering Department monuments FRANK 85 and WEST 17. The portion of the centerline of Schrock Road, having a bearing of N78°31'16"E and monumented as shown hereon, is designated the "basis of bearing" for this survey.

**SURVEY NOTE:**

This survey was prepared using documents of record, prior plats of survey, and observed evidence located by an actual field survey.

CURVE TABLE					
CURVE NO.	DELTA	RADIUS	LENGTH	CHORD BEARING	CHORD DISTANCE
C1	69°47'29"	24.83'	30.25'	N 37°51'08" E	28.41'
C2	74°54'04"	50.00'	65.36'	S 41°04'15" W	60.81'
C3	27°44'25"	24.83'	12.02'	S 16°49'36" W	11.91'
C4	42°03'04"	24.83'	18.23'	S 51°43'21" W	17.82'

Line Table		
Line Number	Direction	Length
L1	S03°27'14"W	15.57'
L2	N11°28'44"W	15.00'
L3	N03°28'43"E	41.40'
L4	N03°28'43"E	17.73'
L5	N78°30'52"E	35.64'
L6	N03°28'43"E	7.98'
L7	S73°40'00"W	95.33'
L8	S71°14'20"W	38.58'
L9	N03°28'43"E	25.71'
L10	N03°28'43"E	42.61'
L11	N78°31'16"E	61.30'
L12	N11°28'44"W	47.00'
L13	N78°08'46"E	69.82'
L14	N08°25'44"E	54.41'
L15	N78°30'52"E	10.08'



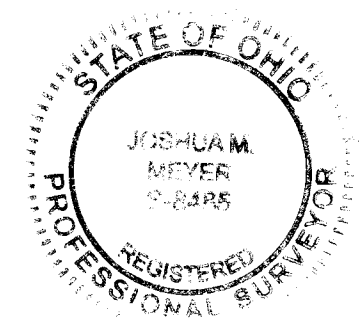
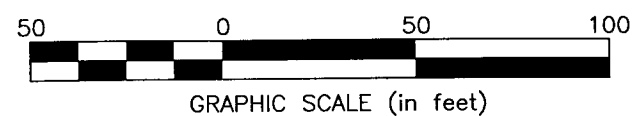
**RECEIVED**

OCT 02 2014

Franklin County Engineer  
 Dean C. Ringle, P.E., P.S.

- = STONE FND.
- = MON. FND.
- = I.P. FND.
- = I.P. SET
- = MAG. NAIL FND.
- = MAG. NAIL SET
- ▲ = R.R. SPK. FND.
- △ = R.R. SPK. SET
- = P.K. NAIL FND.

I.P. Set are 13/16" I.D. iron pipe with cap inscribed EMHT INC



By *[Signature]*  
 Joshua M. Meyer  
 Professional Surveyor No. 8485

9-29-2014  
 Date

J:\20130183\DWG\04SHEETS\BOUNDARY\20130138-VS-BNDY-12.DWG plotted by KING, BRANDON on 9/29/2014 9:12:20 AM last saved by BKING on 9/29/2014 9:12:17 AM  
 Xrefs: 20130183-VS-BNDY-COORD-E-01.DWG & 20130183-CS-REER-RWAY-E.DWG