



SURVEY OF ACREAGE PARCEL

LOT 38, QUARTER TOWNSHIPS 3 & 4, TOWNSHIP 2, RANGE 16

UNITED STATES MILITARY LANDS

CITY OF NEW ALBANY, COUNTY OF FRANKLIN, STATE OF OHIO

Date: August 19, 2014

Scale: 1" = 60'

Job No: 2012-1071

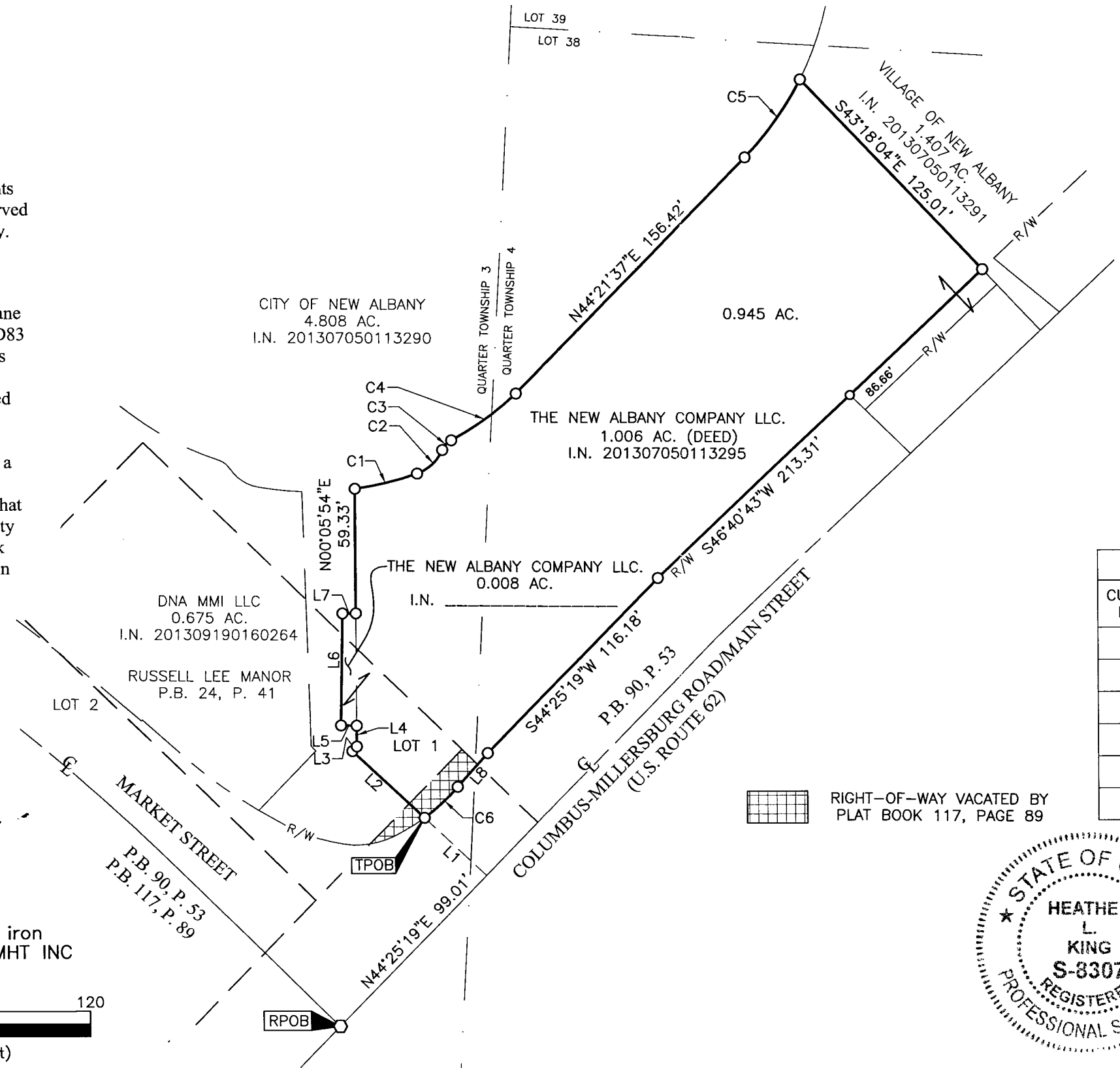
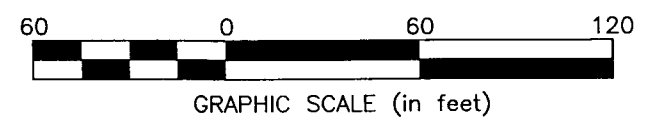
SURVEY NOTE:
This survey was prepared using documents of record, prior plats of survey, and observed evidence located by an actual field survey.

BASIS OF BEARINGS:
Bearings are based on the Ohio State Plane Coordinate System South Zone per NAD83 (1986 Adjustment). Control for bearings was from coordinates of monuments FRANK 78 and FRANK 178, established by the Franklin County Engineering Department using Global Positioning System procedures and equipment, with a bearing of North 53° 09' 04" West for a portion of Market Street as depicted in that subdivision entitled "New Albany County Club Section 19", of record in Plat Book 101, Page 21, Recorder's Office, Franklin County, Ohio.

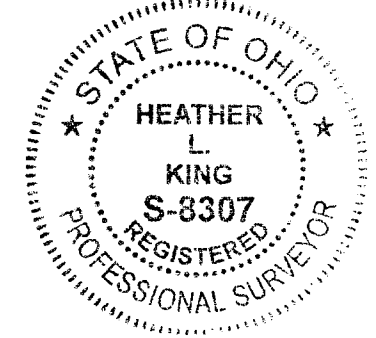
Line Table		
Line Number	Direction	Length
L1	N46°35'31"W	40.19'
L2	N46°35'31"W	46.46'
L3	N44°08'24"E	3.04'
L4	N00°05'54"E	9.93'
L5	N88°46'07"W	7.43'
L6	N01°13'53"E	53.41'
L7	S89°54'06"E	6.37'
L8	S42°01'07"W	21.55'

CURVE TABLE					
CURVE NO.	DELTA	RADIUS	LENGTH	CHORD BEARING	CHORD DISTANCE
C1	11°43'29"	148.50'	30.39'	N 76°24'55" E	30.34'
C2	47°13'17"	20.50'	16.90'	N 46°56'31" E	16.42'
C3	38°46'48"	9.50'	6.43'	N 42°43'17" E	6.31'
C4	15°33'17"	140.50'	38.14'	N 54°20'03" E	38.03'
C5	17°36'45"	148.67'	45.70'	N 35°33'14" E	45.52'
C6	12°51'52"	96.35'	21.63'	N 47°20'38" E	21.59'

- = STONE FND.
 - = MON. FND.
 - = I.P. FND.
 - = I.P. SET
 - = MAG. NAIL FND.
 - = MAG. NAIL SET
 - ▲ = R.R. SPK. FND.
 - △ = R.R. SPK. SET
 - ◆ = P.K. NAIL FND.
- I.P. Set are 13/16" I.D. iron pipe with cap inscribed EMHT INC



RIGHT-OF-WAY VACATED BY PLAT BOOK 117, PAGE 89



By Heather L. King 8/22/14
 Heather L. King Date
 Professional Surveyor No. 8307

J:\20121071\DWG\04SHEETS\BOUNDARY\20121071-VS-BNDY-09.DWG plotted by KING, HEATHER on 9/2/2014 2:54:57 PM last saved by KING on 9/2/2014 2:54:42 PM Xrefs: 20121071.BNDY.DWG