



Evans, Mechwart, Hambleton & Tilton, Inc.
Engineers • Surveyors • Planners • Scientists
5500 New Albany Road, Columbus, OH 43054
Phone: 614.775.4500 Toll Free: 888.775.3648
emht.com

SURVEY OF ACREAGE PARCEL

QUARTER TOWNSHIP 3, TOWNSHIP 1, RANGE 18

UNITED STATES MILITARY LANDS

CITY OF COLUMBUS, COUNTY OF FRANKLIN, STATE OF OHIO

Date: October 6, 2014

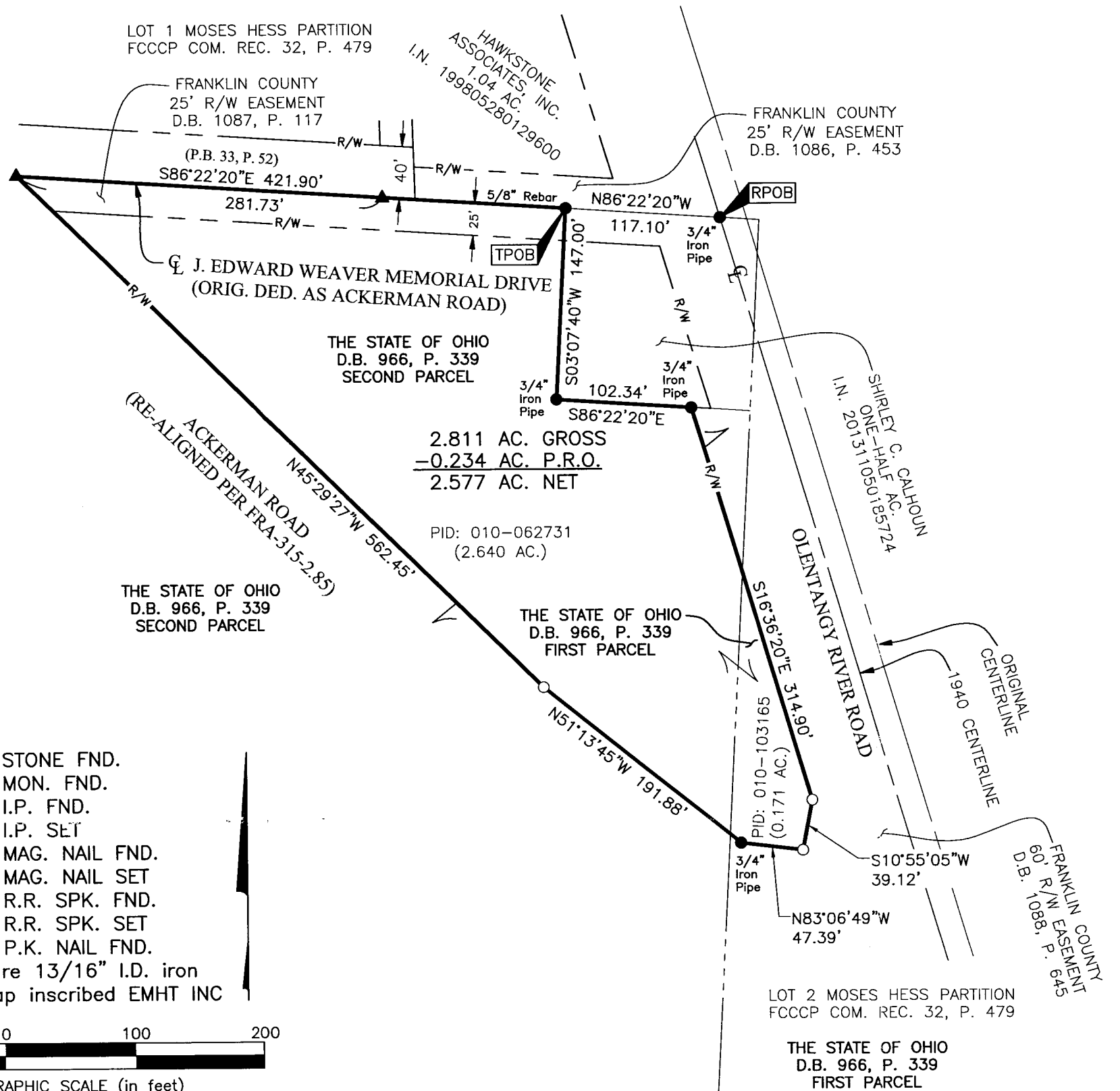
Scale: 1" = 100'

Job No: 2014-1576

RECEIVED

OCT 07 2014

Franklin County Engineer
Dean C. Ringle, P.E., P.S.



SURVEY NOTE:
This survey was prepared using documents of record, prior plats of survey, and observed evidence located by an actual field survey.

BASIS OF BEARINGS:
The Bearings shown hereon are based on the Ohio State Plane Coordinate System (South Zone) as per NAD83 (1986 Adjustment). Control for bearings was from coordinates of monuments COC4-83 and RINGLE. Said bearings originated from a field traverse which was tied to said coordinate system by GPS observations. The portion of the centerline of Old Ackerman Road, having a bearing of South 86° 22' 20" East and monumented as shown hereon, is designated the "basis of bearing" for this survey.

By Matthew A. Kirk 6 Oct 14
Matthew A. Kirk Date
Professional Surveyor No. 7865