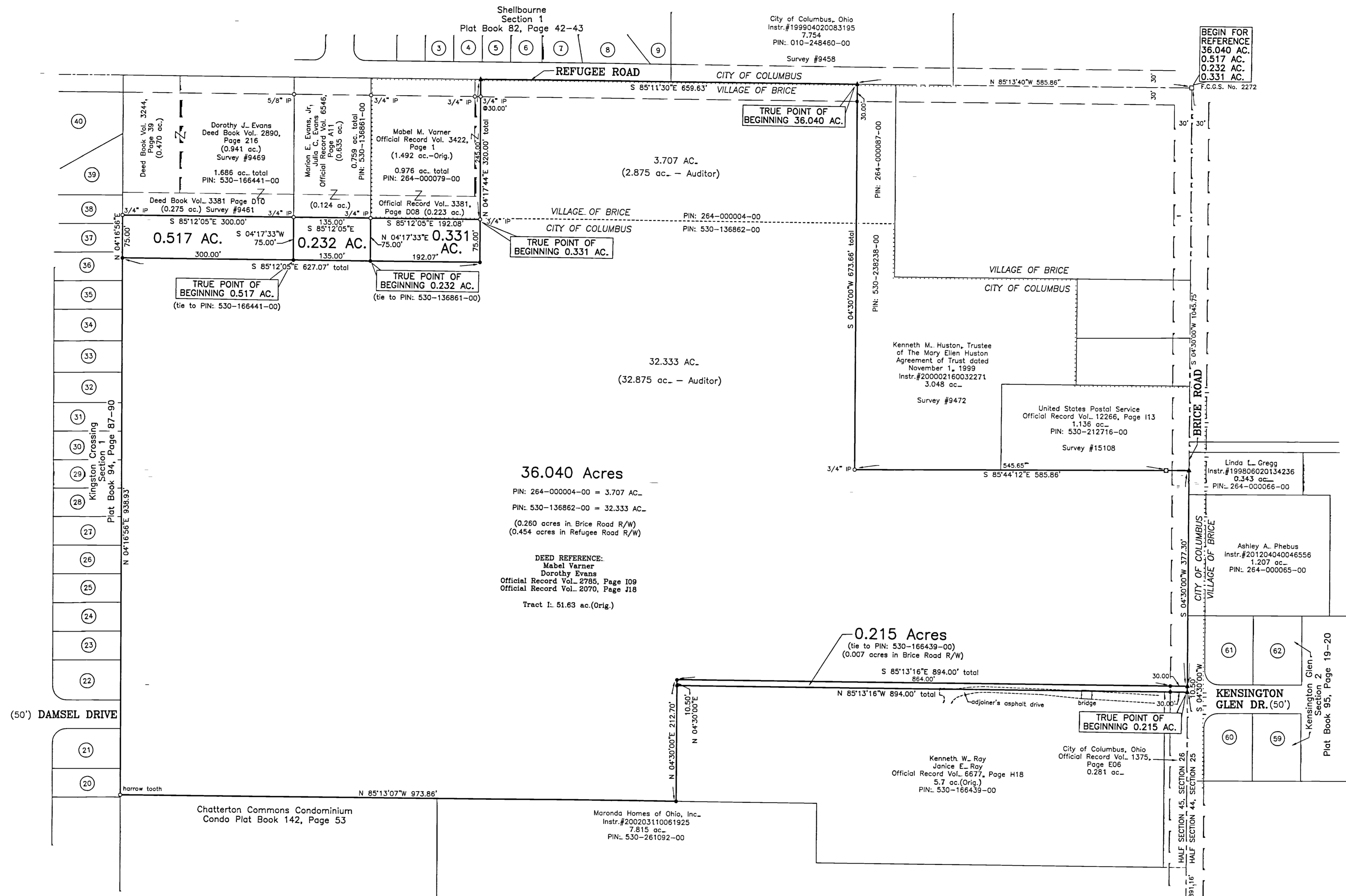
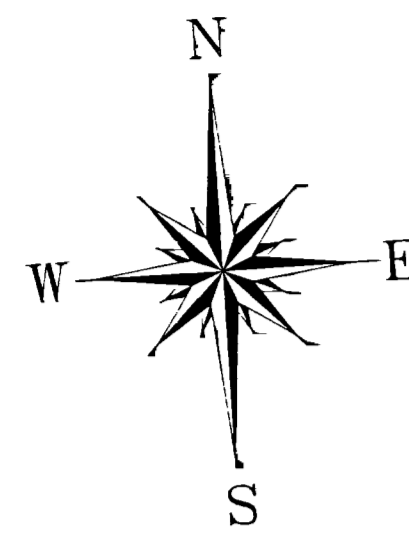


PLAT OF SURVEY

STATE OF OHIO, FRANKLIN COUNTY, VILLAGE OF BRICE AND CITY OF COLUMBUS
SECTION 26, TOWNSHIP 12, RANGE 21, HALF SECTION 45, REFUGEE LANDS



36.040 Acres
 PIN: 264-000004-00 = 3.707 AC.
 PIN: 530-136862-00 = 32.333 AC.
 (0.280 acres in Brice Road R/W)
 (0.454 acres in Refugee Road R/W)

DEED REFERENCE:
 Mabel Varner
 Dorothy Evans
 Official Record Vol. 2785, Page 109
 Official Record Vol. 2070, Page 118
 Tract I: 51.63 ac.(Orig.)

0.215 Acres
 (tie to PIN: 530-166439-00)
 (0.007 acres in Brice Road R/W)
 S 85°13'16"E 894.00' total
 864.00'

BEGIN FOR REFERENCE
 36.040 AC.
 0.517 AC.
 0.232 AC.
 0.331 AC.
 F.C.G.S. No. 2272

BEGIN FOR REFERENCE
 0.215 AC.
 F.C.G.S. No. 9918
 S.E. Corner of
 Section 26
 Half Section 45

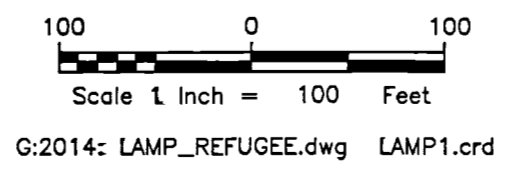
RECEIVED
 SEP 04 2014
 Franklin County Engineer
 Dean C. Ringle, P.E., P.S.

BY: *[Signature]*
 Thomas M. Tobin Date
 Registered Surveyor No. 7674

TOBIN-MCFARLAND SURVEYING INC.
 111 West Wheeling Street
 Lancaster, Ohio 43130
 Ph. 740-687-1710 Fax 740-687-0877

- LEGEND**
- 5/8" X 30" rebar set with a "Tobin-McFarland" ID cap
 - Iron pipe (or other) found, as labelled
 - ▲ PK nail set
 - Concrete monument found
 - Franklin County Geodetic Survey Monument found
 - Village of Brice/City of Columbus Corporation Line

Resources used that are pertinent to this survey are shown on this plat.
 Bearings are based on the west line of the 3.048 acre tract, being South 04°30'00" West, as surveyed by E.M.H.&T., Inc., filed as Survey #9472.
 FEMA Community Panel No. 39049C0362K, Zone "AE" & "X".



Surveyed For: Tom Lamp
 Date: August 27, 2014

F.C.G.S. No. 9918
 S.E. Corner of
 Section 26
 Half Section 45