

RECEIVED

AUG 01 2014

Franklin County Engineer
Dean C. Ringle, P.E., P.S.

RIGHT OF WAY EXHIBIT

FRANKLIN COUNTY, STATE OF OHIO
CITY OF HILLIARD
V.M.S. 3000

①
MADISON TRI-STATE PROPERTIES, LLC,
AN OHIO LIMITED LIABILITY COMPANY
050-003043-00
28.058 ACRES
INST. #201105250066948

①-WD
1.5486 ACRES

②
S-K HILLIARD, LLC,
A COLORADO LIMITED LIABILITY COMPANY
050-011217-00
6.393 ACRES
INST. #201407170091482

BASIS FOR BEARINGS:

BEARINGS ARE BASED ON THE BEARING BETWEEN
FRANKLIN COUNTY ENGINEER'S MONUMENT "DAVIDSON"
AND FRANKLIN COUNTY GEODETIC SURVEY MONUMENT
"4486RESET" BEING S 19° 15' 30" E.

- MONUMENT LEGEND**
- EXISTING CONCRETE MONUMENT
 - I.P.S. 5/8" X 30" REBAR W/CAP "GPD GROUP"
 - I.P.R.F. 5/8" REBAR FOUND

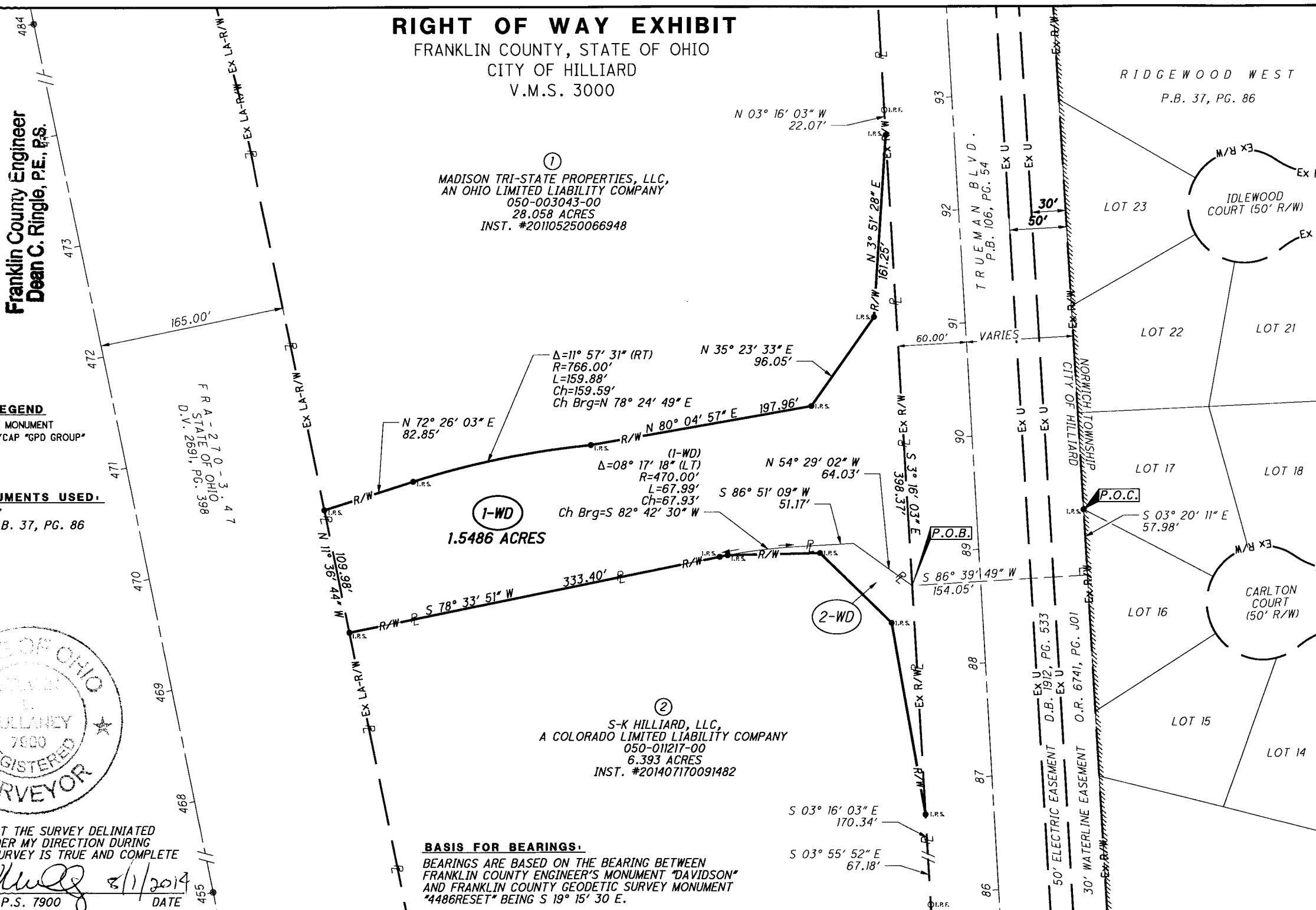
PERTINENT DOCUMENTS USED:
ODOT FRA-270-3.47
RIDGEWOOD WEST P.B. 37, PG. 86

FRA-270-3.47
STATE OF OHIO
D.V. 2691, PG. 398



I HEREBY CERTIFY THAT THE SURVEY DELINEATED
HEREON WAS MADE UNDER MY DIRECTION DURING
MAY, 2014, AND THE SURVEY IS TRUE AND COMPLETE
AS SHOWN.

STEVEN L. MULLANEY, P.S. 7900 DATE 8/1/2014



**RIGHT OF WAY EXHIBIT
PARCEL 1-WD**

**CITY OF HILLIARD
ANSON DR. EXT.**

R/W DESIGNER: N.L.C.
R/W REVIEWER: S.L.M.