

# RIGHT OF WAY EXHIBIT

FRANKLIN COUNTY, STATE OF OHIO  
CITY OF HILLIARD  
V.M.S. 3000

①  
MADISON TRI-STATE PROPERTIES, LLC,  
AN OHIO LIMITED LIABILITY COMPANY  
050-003043-00  
28.058 ACRES  
INST. #201105250066948

**RECEIVED**

AUG 01 2014

Franklin County Engineer  
Dean C. Ringle, P.E., P.S.

②  
S-K HILLIARD, LLC,  
A COLORADO LIMITED LIABILITY COMPANY  
050-011217-00  
6.393 ACRES  
INST. #201407170091482

**BASIS FOR BEARINGS:**

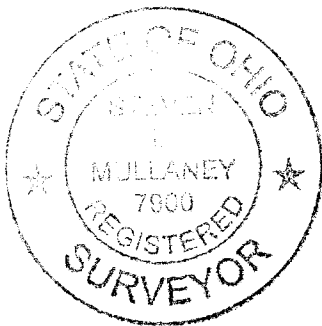
BEARINGS ARE BASED ON THE BEARING BETWEEN  
FRANKLIN COUNTY ENGINEER'S MONUMENT "DAVIDSON"  
AND FRANKLIN COUNTY GEODETIC SURVEY MONUMENT  
"4486RESET" BEING S 19° 15' 30" E.

**MONUMENT LEGEND**

- EXISTING CONCRETE MONUMENT
- I.R.S. 5/8" X 30" REBAR W/CAP "GPD GROUP"
- O.I.R.F. 5/8" REBAR FOUND

**PERTINENT DOCUMENTS USED:**

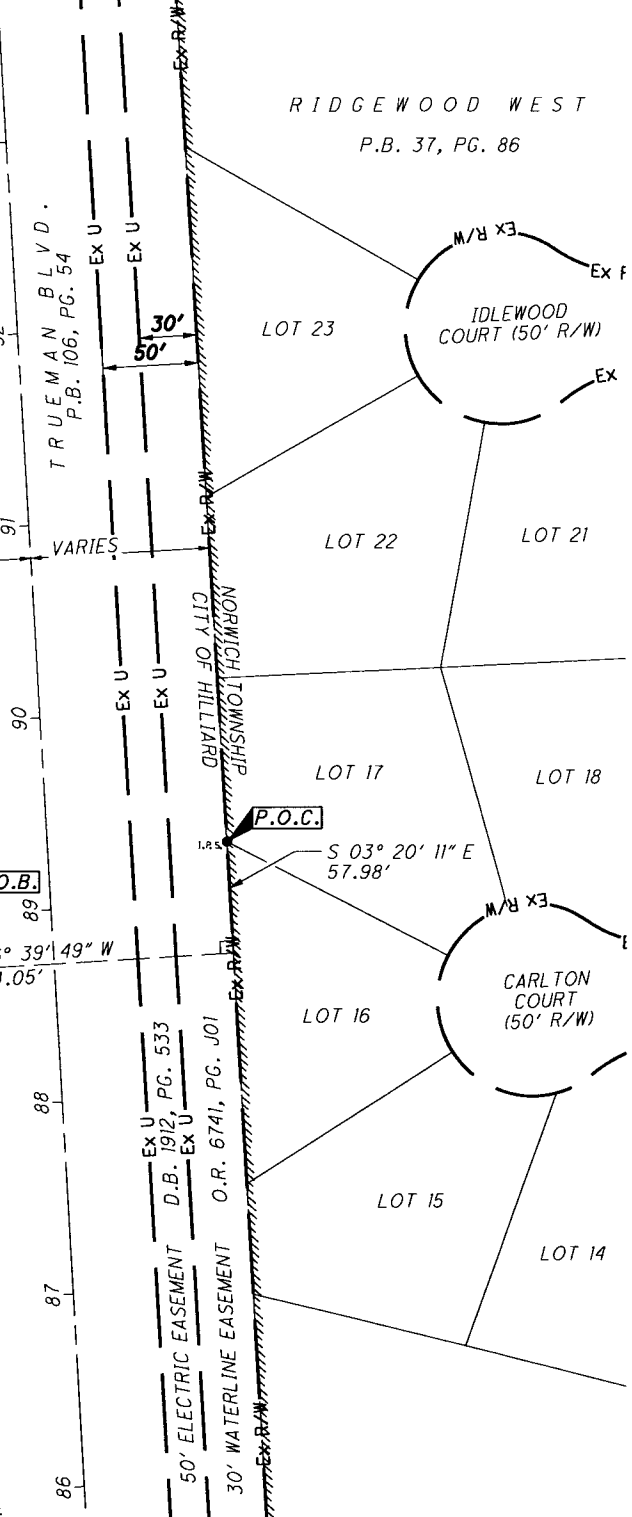
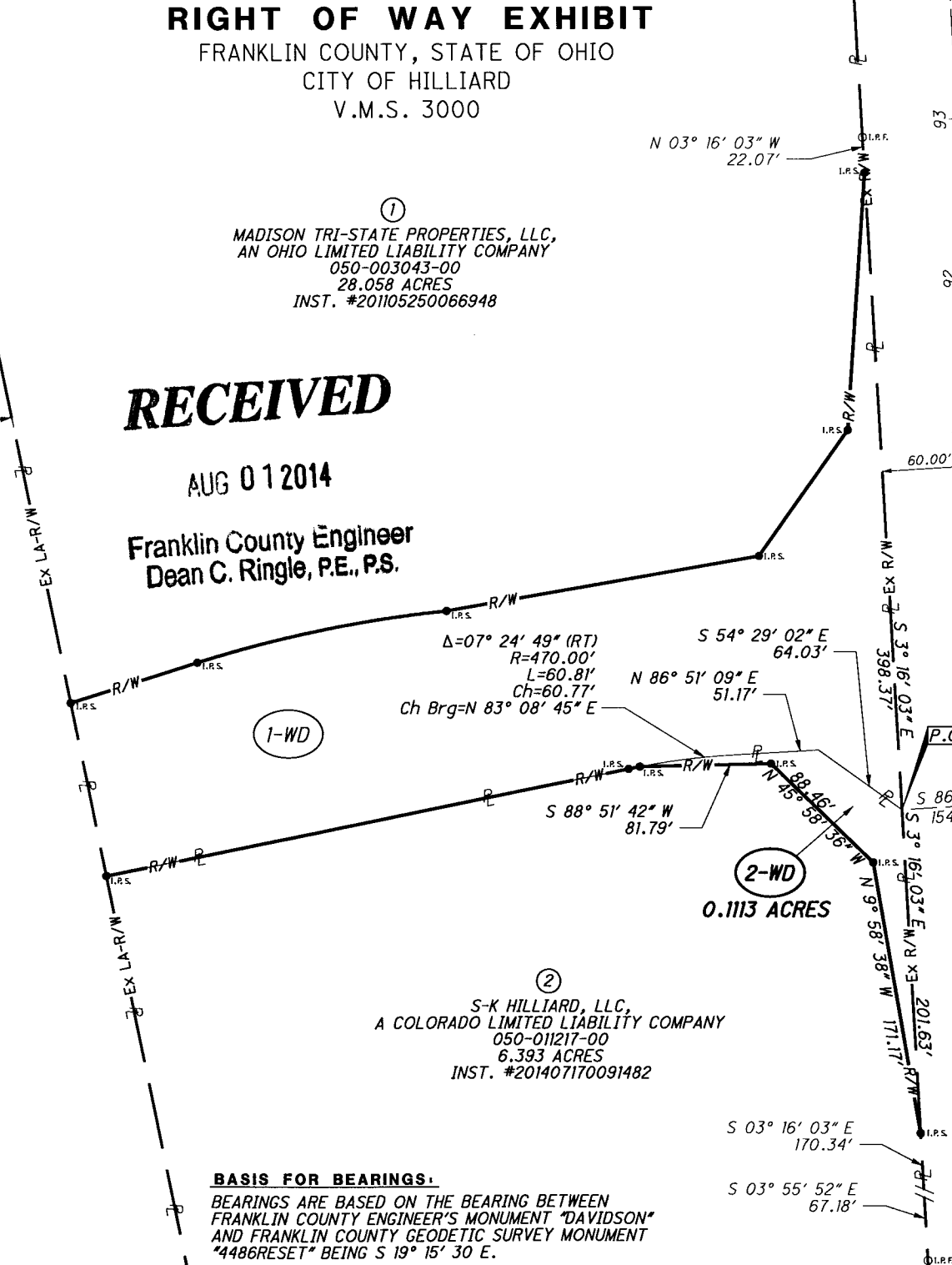
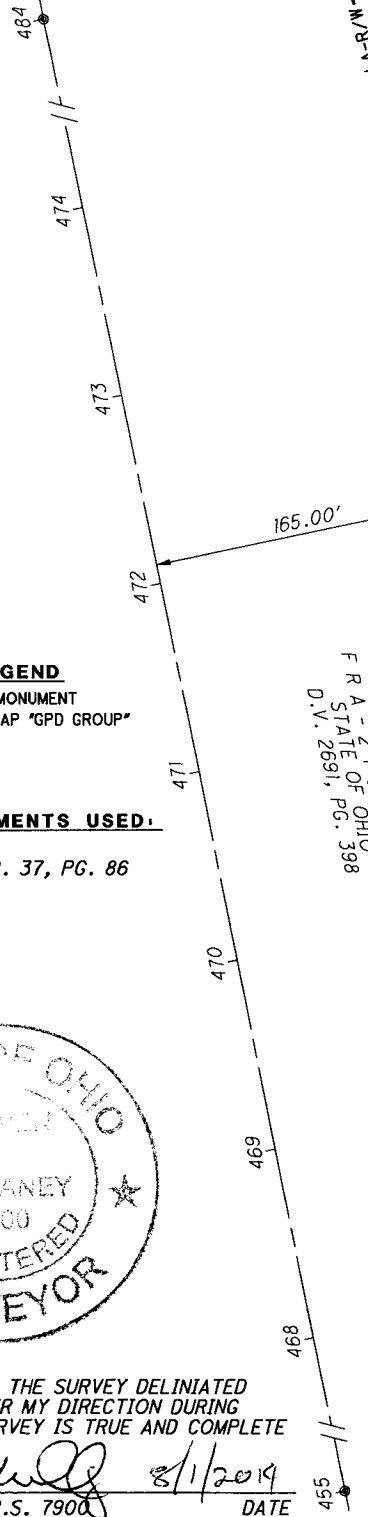
- ODOT FRA-270-3.47
- RIDGEWOOD WEST P.B. 37, PG. 86



I HEREBY CERTIFY THAT THE SURVEY DELINEATED  
HEREON WAS MADE UNDER MY DIRECTION DURING  
MAY, 2014, AND THE SURVEY IS TRUE AND COMPLETE  
AS SHOWN.

*Steven L. Mullaney* 8/1/2014  
STEVEN L. MULLANEY, P.S. 7900 DATE

F R A - 2 7 0 - 3 . 4 7  
STATE OF OHIO  
D.V. 2691, PG. 398



CITY OF HILLIARD  
ANSON DR. EXT.

RIGHT OF WAY EXHIBIT  
PARCEL 2-WD

R/W DESIGNER  
N.L.C.

R/W REVIEWER  
S.L.M.

HORIZONTAL SCALE IN FEET