

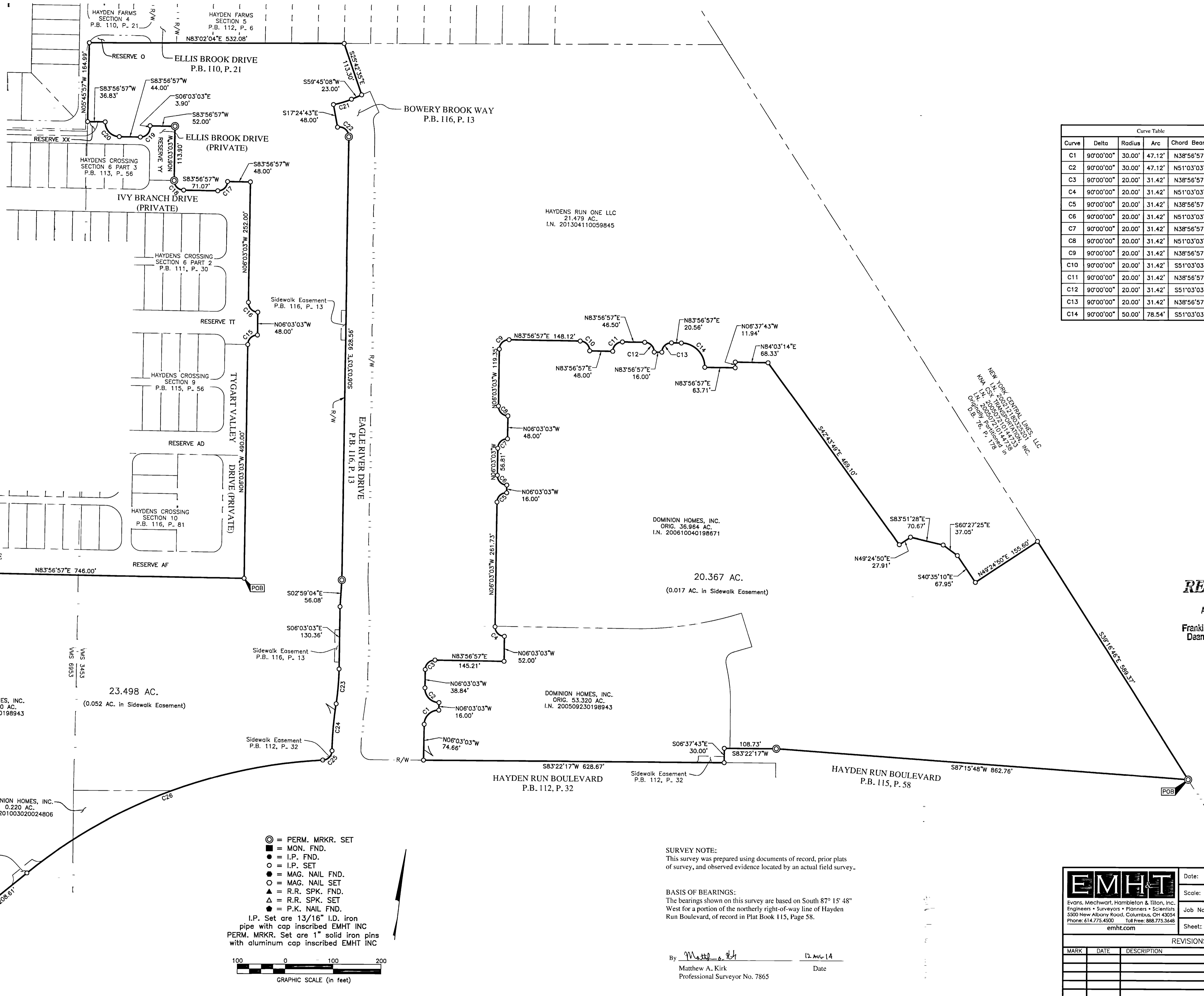
# SURVEY OF ACREAGE PARCELS

## VIRGINIA MILITARY SURVEY NOS. 3453 AND 6953

### CITY OF COLUMBUS, COUNTY OF FRANKLIN, STATE OF OHIO

Curve	Delta	Radius	Arc	Chord Bearing	Chord
C15	90°00'00"	20.00'	31.42'	N38°56'57"E	28.28'
C16	90°00'00"	20.00'	31.42'	N51°03'03"W	28.28'
C17	90°00'00"	20.00'	31.42'	S38°56'57"W	28.28'
C18	90°00'00"	20.00'	31.42'	N51°03'03"W	28.28'
C19	90°00'00"	20.00'	31.42'	S38°56'57"W	28.28'
C20	90°00'00"	30.00'	47.12'	N51°03'03"W	42.43'
C21	12°50'09"	176.00'	39.43'	S66°10'12"W	39.35'
C22	101°21'40"	20.00'	35.38'	S56°43'53"E	30.95'
C23	7°42'12"	545.19'	73.30'	S02°12'59"E	73.25'
C24	7°36'43"	738.86'	98.16'	S02°10'15"E	98.09'
C25	86°40'55"	20.00'	30.26'	S37°21'51"W	27.45'
C26	36°22'42"	1060.00'	673.02'	S62°00'04"W	661.77'
C27	11°03'50"	740.00'	142.89'	S49°20'39"W	142.67'
C28	47°40'00"	49.00'	40.77'	N58°56'00"W	39.60'
C29	86°41'50"	20.00'	30.26'	N78°27'02"W	27.46'
C30	18°53'50"	466.00'	153.69'	S67°38'58"W	153.00'
C31	86°01'36"	20.00'	30.03'	S34°05'04"W	27.29'
C32	90°00'00"	20.00'	31.42'	N38°56'57"E	28.28'
C33	90°00'00"	20.00'	31.42'	S51°03'03"E	28.28'
C34	90°00'00"	20.00'	31.42'	N38°56'57"E	28.28'

Curve	Delta	Radius	Arc	Chord Bearing	Chord
C1	90°00'00"	30.00'	47.12'	N38°56'57"E	42.43'
C2	90°00'00"	30.00'	47.12'	N51°03'03"W	42.43'
C3	90°00'00"	20.00'	31.42'	N38°56'57"E	28.28'
C4	90°00'00"	20.00'	31.42'	N51°03'03"W	28.28'
C5	90°00'00"	20.00'	31.42'	N38°56'57"E	28.28'
C6	90°00'00"	20.00'	31.42'	N51°03'03"W	28.28'
C7	90°00'00"	20.00'	31.42'	N38°56'57"E	28.28'
C8	90°00'00"	20.00'	31.42'	N51°03'03"W	28.28'
C9	90°00'00"	20.00'	31.42'	N38°56'57"E	28.28'
C10	90°00'00"	20.00'	31.42'	S51°03'03"E	28.28'
C11	90°00'00"	20.00'	31.42'	N38°56'57"E	28.28'
C12	90°00'00"	20.00'	31.42'	S51°03'03"E	28.28'
C13	90°00'00"	20.00'	31.42'	N38°56'57"E	28.28'
C14	90°00'00"	50.00'	78.54'	S51°03'03"E	70.71'



- ⊙ = PERM. MRKR. SET
  - = MON. FND.
  - = I.P. FND.
  - = I.P. SET
  - = MAG. NAIL FND.
  - = MAG. NAIL SET
  - ▲ = R.R. SPK. FND.
  - ▲ = R.R. SPK. SET
  - △ = P.K. NAIL FND.
- I.P. Set are 1/16" I.D. iron pipe with cap inscribed EMHT INC  
 PERM. MRKR. Set are 1" solid iron pins with aluminum cap inscribed EMHT INC

**SURVEY NOTE:**  
 This survey was prepared using documents of record, prior plats of survey, and observed evidence located by an actual field survey.

**BASIS OF BEARINGS:**  
 The bearings shown on this survey are based on South 87° 15' 48" West for a portion of the northerly right-of-way line of Hayden Run Boulevard, of record in Plat Book 115, Page 58.

By Matthew A. Kirk Date 12 Aug 14  
 Matthew A. Kirk Professional Surveyor No. 7865

**RECEIVED**  
 AUG 13 2014  
 Franklin County Engineer  
 Dean C. Ringle, P.E., P.S.

<b>EMHT</b> <small>Evans, Mechwart, Hamilton &amp; Tilton, Inc.                  Engineers • Surveyors • Planners • Scientists                  5500 New Albany Road, Columbus, OH 43204                  Phone: 614.775.4500 Toll Free: 888.775.3648                  emht.com</small>		Date: August 12, 2014
		Scale: 1" = 100'
Job No: 2014-1328		Sheet: 1 of 1
REVISIONS		
MARK	DATE	DESCRIPTION