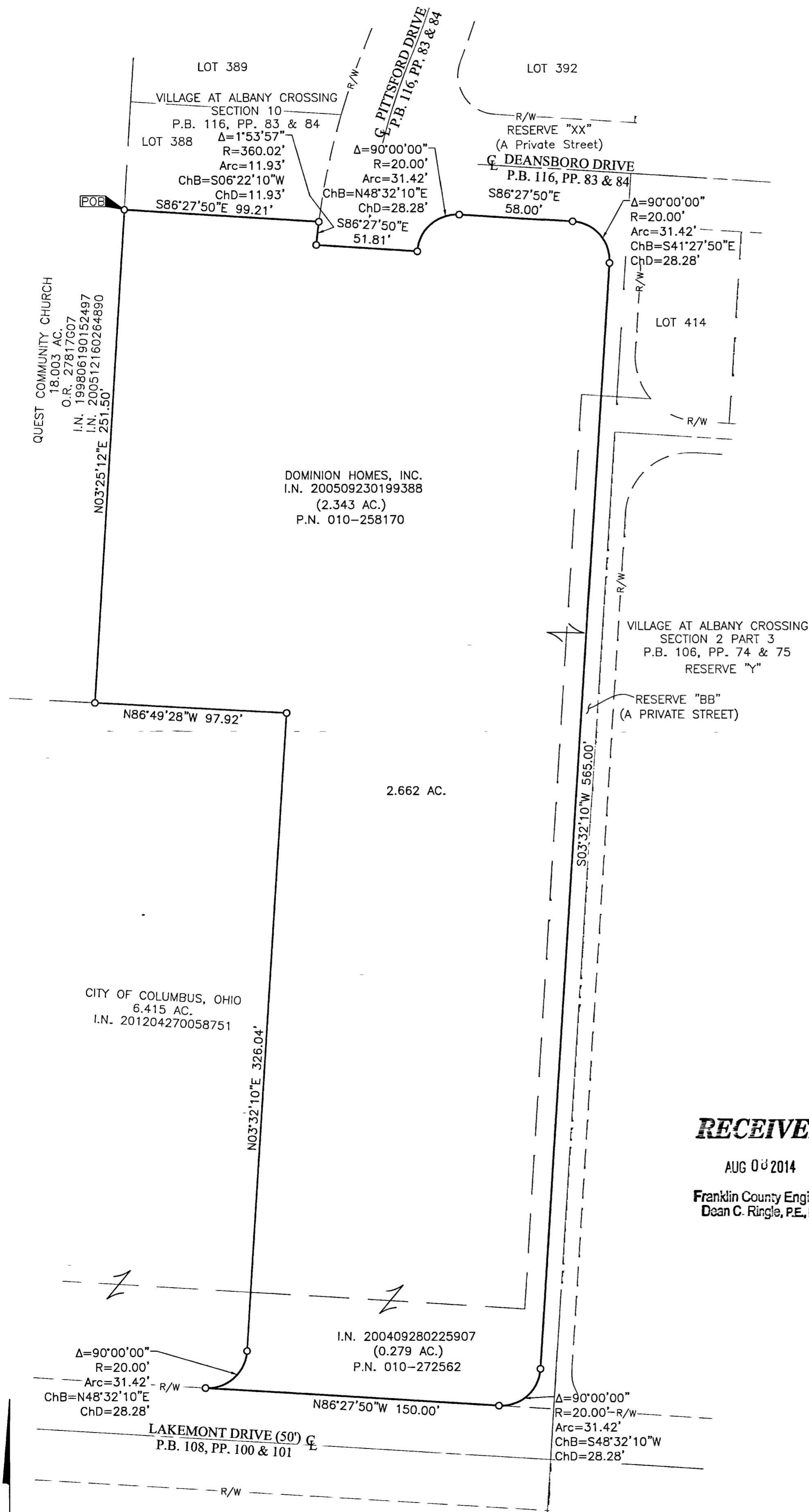


SURVEY OF ACREAGE PARCEL

SECTION 15, QUARTER TOWNSHIP 2, TOWNSHIP 2, RANGE 16

UNITED STATES MILITARY LANDS

CITY OF COLUMBUS, COUNTY OF FRANKLIN, STATE OF OHIO



BASIS OF BEARINGS:
 Bearings shown hereon are based on the Ohio State Plane Coordinate System (South Zone) as per NAD83 (1986 Adjustment). Control for bearings was from coordinates of monuments 8824 and 8825, having a bearing of North 86° 29' 28" West, established by the Franklin County Engineering Department, using Global Positioning System procedures and equipment.

o = I.P. SET

I.P. Set are 13/16" I.D. iron pipe with cap inscribed EMHT INC

RECEIVED

AUG 08 2014

Franklin County Engineer
 Dean C. Ringle, P.E., P.S.

By Matthew A. Kirk 8 AUG 14
 Matthew A. Kirk Date
 Professional Surveyor No. 7865

 Evans, Mechwart, Hambleton & Tilton, Inc. Engineers • Surveyors • Planners • Scientists 5500 New Albany Road, Columbus, OH 43054 Phone: 614.775.4500 Toll Free: 888.775.3648 emht.com	Date: August 8, 2014	
	Scale: 1" = 40'	
	Job No: 2014-1327	
	Sheet: 1 of 1	
REVISIONS		
MARK	DATE	DESCRIPTION

