

I-8-F



Evans, Mechwart, Hambleton & Tilton, Inc.
Engineers • Surveyors • Planners • Scientists
5500 New Albany Road, Columbus, OH 43054
Phone: 614.775.4500 Toll Free: 888.775.3648
emht.com

SURVEY OF ACREAGE PARCEL

QUARTER TOWNSHIP 3, TOWNSHIP 2, RANGE 16
UNITED STATES MILITARY LANDS
CITY OF NEW ALBANY, COUNTY OF FRANKLIN, STATE OF OHIO

Date: August 21, 2014

Scale: 1" = 60'

Job No: 2014-1098

⊙ = P.M. SET
○ = I.P. SET

I.P. Set are 13/16" I.D. iron pipe with cap inscribed EMHT INC
P.M. Set are 1" diameter, 30" long solid iron pin with cap inscribed EMHT INC

SURVEY NOTE:

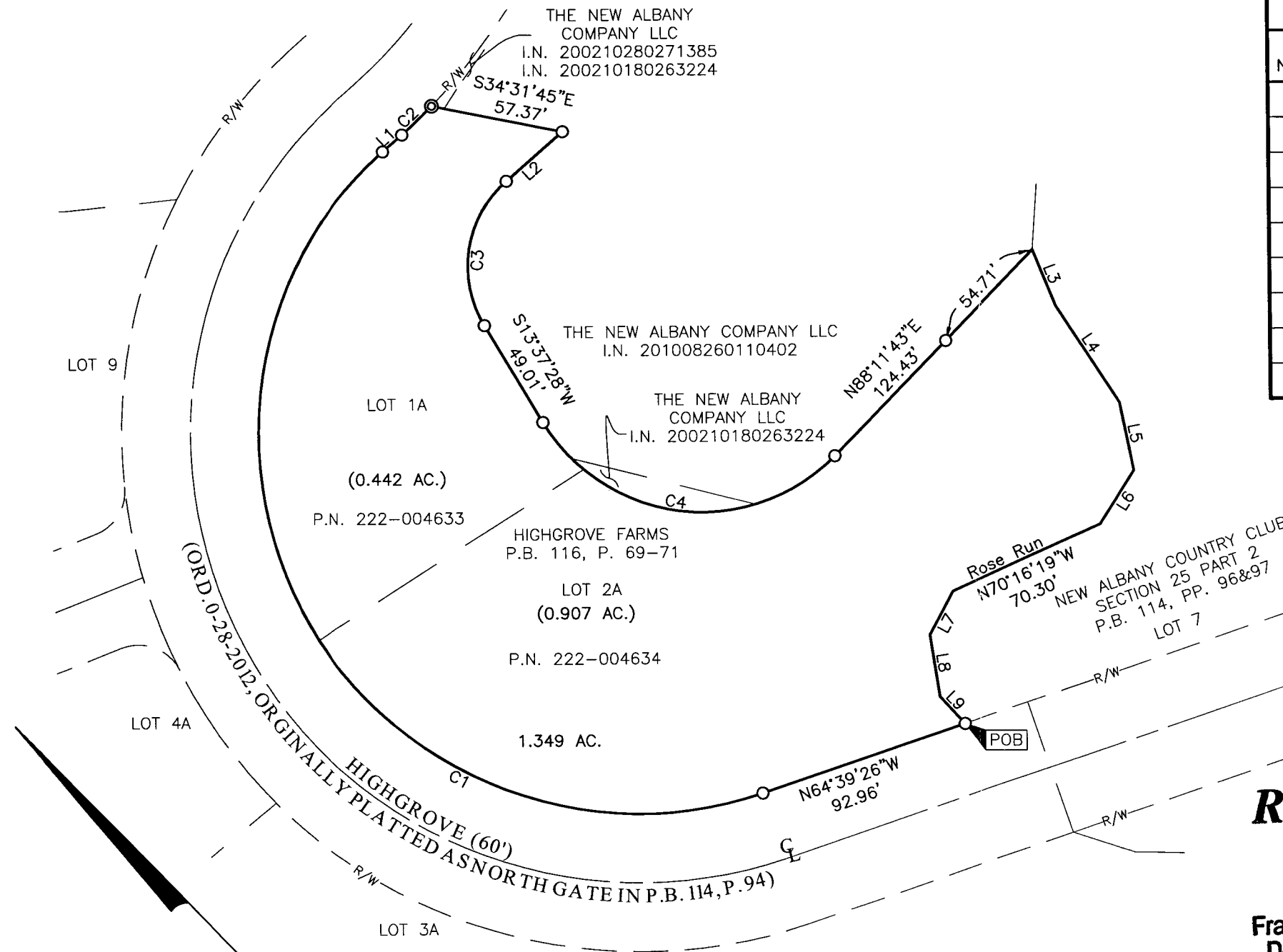
This survey was prepared using documents of record, prior plats of survey, and observed evidence located by an actual field survey.

BASIS OF BEARINGS:

The bearings shown hereon are based on the same meridian as the bearings shown on the subdivision plat entitled "Highgrove Farms" of record in Plat Book 116, Pages 69 - 71, Recorder's Office, Franklin County, Ohio. On said plat of record, a portion of the northerly right of way line of Highgrove is shown as having a bearing of North 64°39'26" West.

Line Table		
Line Number	Length	Direction
L1	11.17'	S87°20'30"E
L2	32.50'	N87°20'30"W
L3	26.31'	S22°08'48"W
L4	50.47'	S11°23'09"W
L5	30.02'	S32°34'43"W
L6	27.64'	S76°24'35"W
L7	21.45'	S72°24'36"W
L8	27.29'	S35°25'13"W
L9	16.00'	S01°03'13"W

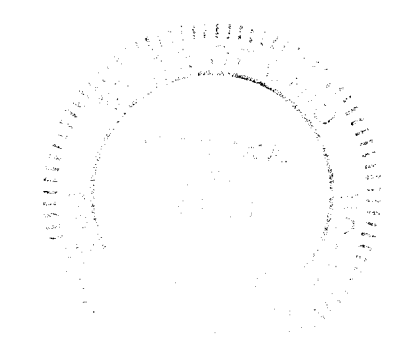
Curve Table					
Curve Number	Delta	Radius	Length	Chord Bearing	Chord Distance
C1	157°18'57"	165.00'	453.04'	N14°00'02"E	323.56'
C2	4°28'57"	230.00'	17.99'	S89°34'58"E	17.99'
C3	79°02'02"	50.00'	68.97'	S53°08'29"W	63.63'
C4	105°25'45"	80.00'	147.21'	S39°05'24"E	127.30'



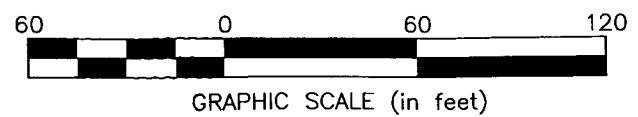
RECEIVED

AUG 21 2014

Franklin County Engineer
Dean C. Ringle, P.E., P.S.



By Matthew A. Kirk 21 AUG 14
Matthew A. Kirk
Registered Surveyor No. 7865



J:\2014\1098\DWG\04SHEETS\BOUNDARY\20141098-VS-BNDY.DWG plotted by KIRK, MATTHEW on 8/21/2014 9:27:16 AM last saved by MKIRK on 8/21/2014 9:26:58 AM