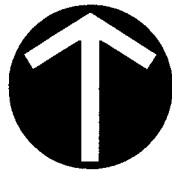


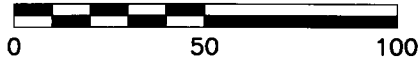
# SURVEY OF ACREAGE PARCEL

STATE OF OHIO, COUNTY OF FRANKLIN, CITY OF COLUMBUS,  
IN QUARTER TOWNSHIP 3, TOWNSHIP 1, RANGE 18,  
UNITED STATES MILITARY LANDS



NORTH

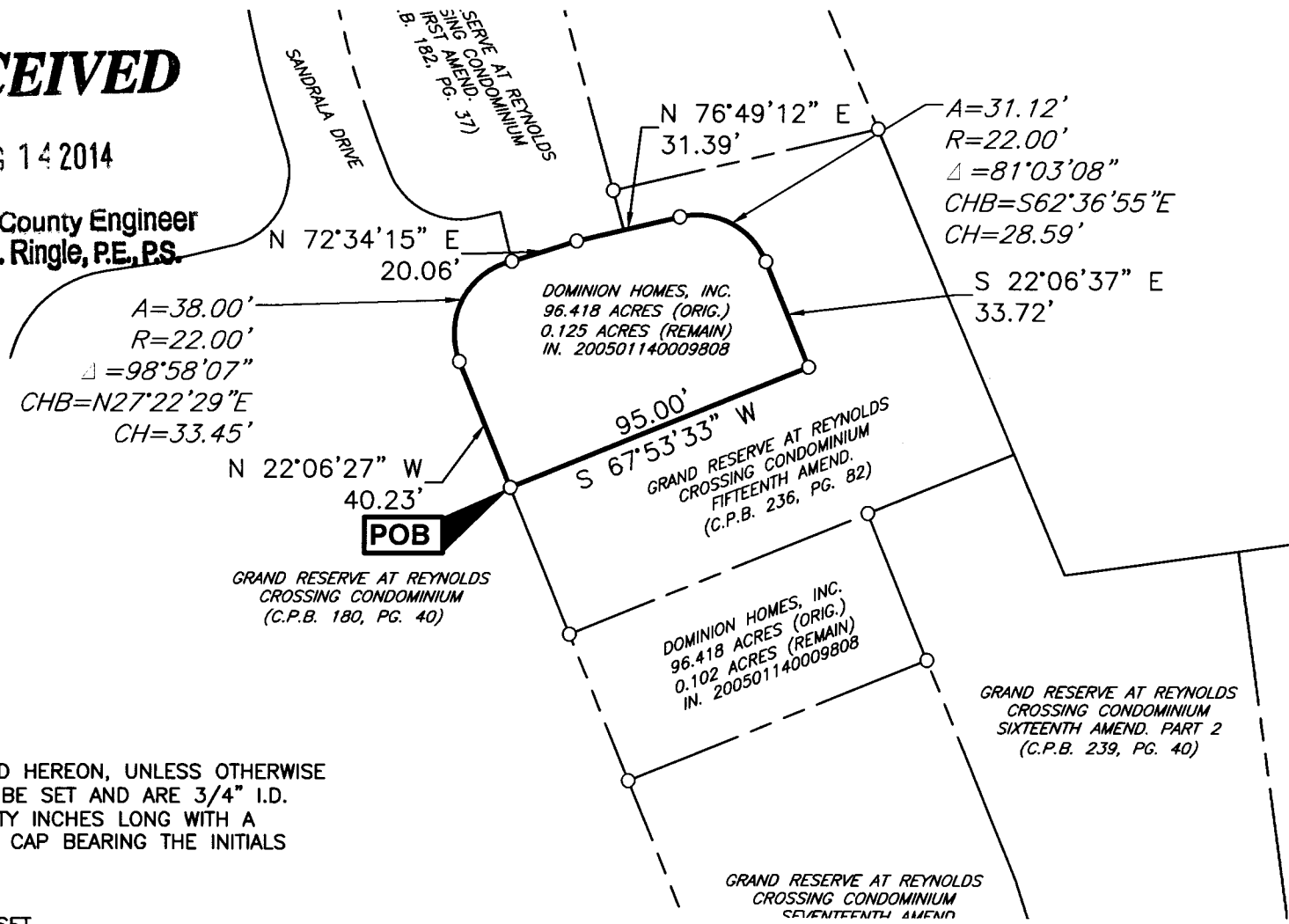
SCALE IN FEET



## RECEIVED

AUG 14 2014

Franklin County Engineer  
Dean C. Ringle, P.E., P.S.

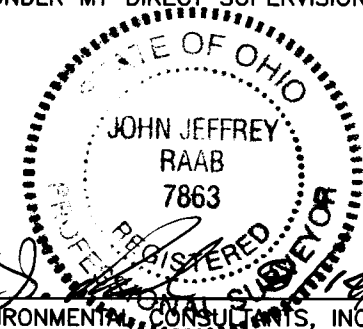


### BASIS OF BEARINGS:

THE BEARINGS SHOWN ON THIS PLAT ARE BASED ON THE BEARING N 81°50'56" E FOR THE CENTERLINE OF EAST BROAD STREET AS DETERMINED BY FRANKLIN COUNTY MONUMENTS 3353 AND 3355. NAD 83 OHIO SOUTH ZONE, 1986 ADJUSTMENT. AS SHOWN IN REYNOLDS CROSSING SECTION 2, PART 2 IN PLAT BOOK 115, PAGE 40.

### CERTIFICATION:

I HEREBY CERTIFY THIS PLAT WAS CREATED BY USING MEASUREMENTS FROM AN ACTUAL FIELD SURVEY CONDUCTED UNDER MY DIRECT SUPERVISION.



*John J. Raab*  
CIVIL & ENVIRONMENTAL CONSULTANTS, INC.  
JOHN J. RAAB  
PROFESSIONAL SURVEYOR NO.: 7863



**Civil & Environmental Consultants, Inc.**

8740 Orion Place, Suite 100 - Columbus, OH 43240  
614-540-6633 · 888-598-6808  
www.cecinc.com

**REYNOLDS CROSSING  
REMAINING PARCELS**

Situate In  
**CITY OF COLUMBUS  
FRANKLIN COUNTY, OHIO**  
Made For  
**DOMINION HOMES, INC.  
REYNOLDS CROSSING**

### IRON PINS

WHERE INDICATED HEREON, UNLESS OTHERWISE NOTED, ARE TO BE SET AND ARE 3/4" I.D. IRON PIPE, THIRTY INCHES LONG WITH A YELLOW PLASTIC CAP BEARING THE INITIALS "CEC".

- IRON PIN SET
- IRON PIN FOUND

DATE:	AUGUST 2014	SCALE:	1" = 50'	DRAWING NO.:	<b>3</b>
DRAWN BY:	BA	CHECKED BY:	JJR		
PROJECT NO:	140-239	APPROVED BY:	JAM	SHEET 1 OF 1	

P:\2014\140-239\Survey\Draw\140-239 REMAINING.dwg\3 LS:(08/08/2014 - ballen) - LP: 8/8/2014 3:33 PM