

SURVEY OF ACREAGE PARCEL

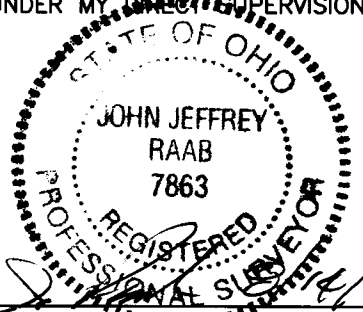
STATE OF OHIO, COUNTY OF FRANKLIN, CITY OF COLUMBUS,
IN QUARTER TOWNSHIP 3, TOWNSHIP 1, RANGE 18,
UNITED STATES MILITARY LANDS

BASIS OF BEARINGS:

THE BEARINGS SHOWN ON THIS PLAT ARE BASED ON THE BEARING N 81°50'56" E FOR THE CENTERLINE OF EAST BROAD STREET AS DETERMINED BY FRANKLIN COUNTY MONUMENTS 3353 AND 3355. NAD 83 OHIO SOUTH ZONE, 1986 ADJUSTMENT. AS SHOWN IN REYNOLDS CROSSING SECTION 2, PART 2 IN PLAT BOOK 115, PAGE 40.

CERTIFICATION:

I HEREBY CERTIFY THIS PLAT WAS CREATED BY USING MEASUREMENTS FROM AN ACTUAL FIELD SURVEY CONDUCTED UNDER MY DIRECT SUPERVISION.



John J. Raab
CIVIL & ENVIRONMENTAL CONSULTANTS, INC.

JOHN J. RAAB
PROFESSIONAL SURVEYOR NO.: 7863

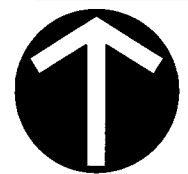
CEC
Civil & Environmental Consultants, Inc.
8740 Orion Place, Suite 100 - Columbus, OH 43240
614-540-6633 · 888-598-6808
www.cecinc.com

REYNOLDS CROSSING
REMAINING PARCELS

Situate In
CITY OF COLUMBUS
FRANKLIN COUNTY, OHIO

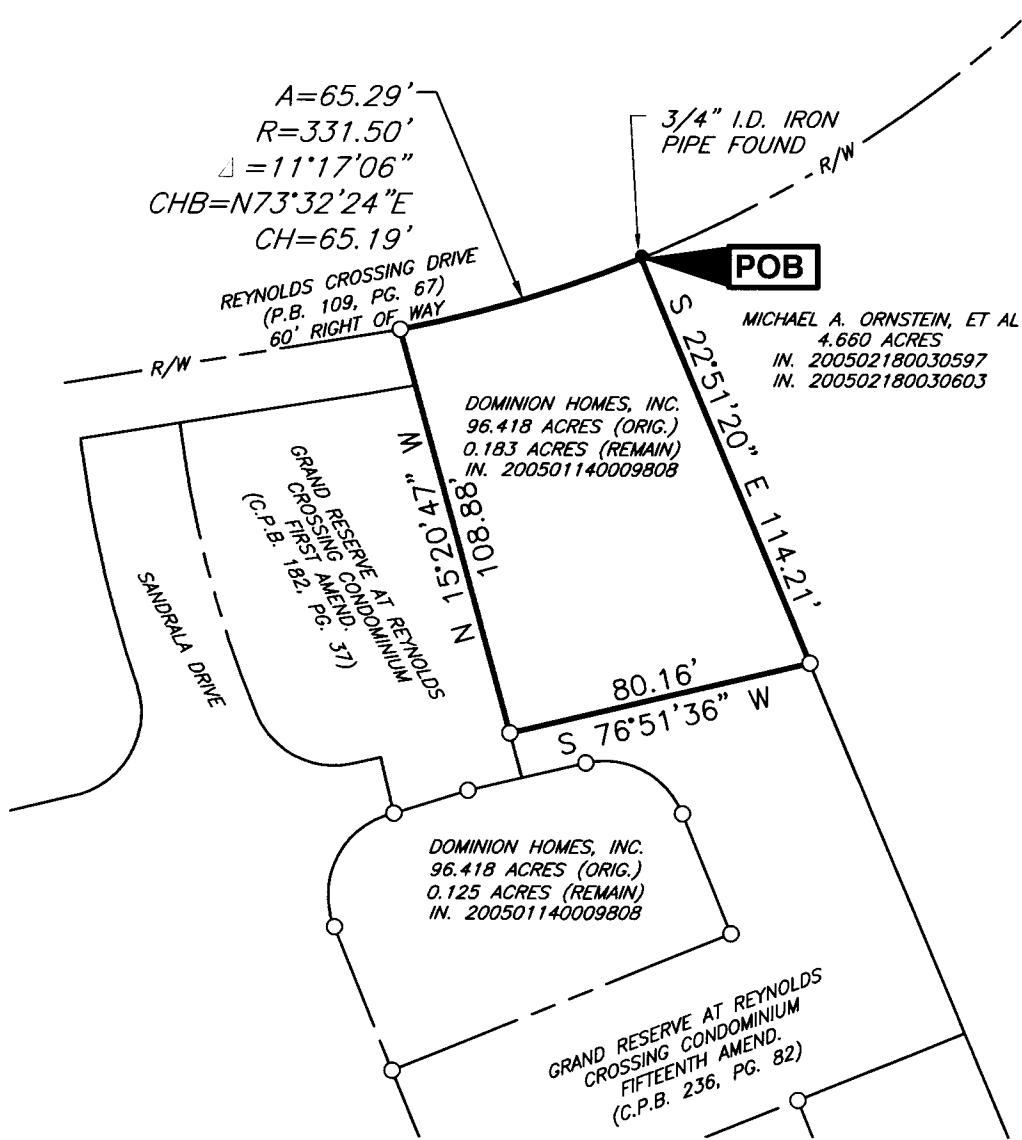
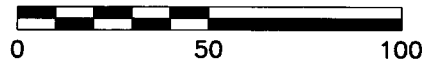
Made For
DOMINION HOMES, INC.
REYNOLDS CROSSING

DATE:	AUGUST 2014	SCALE:	1"=50'	DRAWING NO.:	2
DRAWN BY:	BA	CHECKED BY:	JJR		
PROJECT NO.:	140-239	APPROVED BY:	JAM	SHEET 1 OF 1	



NORTH

SCALE IN FEET



RECEIVED

AUG 14 2014

Franklin County Engineer
Dean C. Ringle, P.E., P.S.

IRON PINS

WHERE INDICATED HEREON, UNLESS OTHERWISE NOTED, ARE TO BE SET AND ARE 3/4" I.D. IRON PIPE, THIRTY INCHES LONG WITH A YELLOW PLASTIC CAP BEARING THE INITIALS "CEC".

- IRON PIN SET
- IRON PIN FOUND

P:\2014\140-239\Survey\Draw\140-239 REMAINING.dwg[2] LS:(08/08/2014 - ballen) - LP: 8/8/2014 3:33 PM