



Evans, Mechwart, Hambleton & Tilton, Inc.
Engineers • Surveyors • Planners • Scientists
5500 New Albany Road, Columbus, OH 43054
Phone: 614.775.4500 Toll Free: 888.775.3648
emht.com

SURVEY OF ACREAGE PARCEL

SECTION 24, TOWNSHIP 11, RANGE 21, CONGRESS LANDS

CITY OF CANAL WINCHESTER, COUNTY OF FRANKLIN, STATE OF OHIO

Date: August 5, 2014

Scale: 1" = 60'

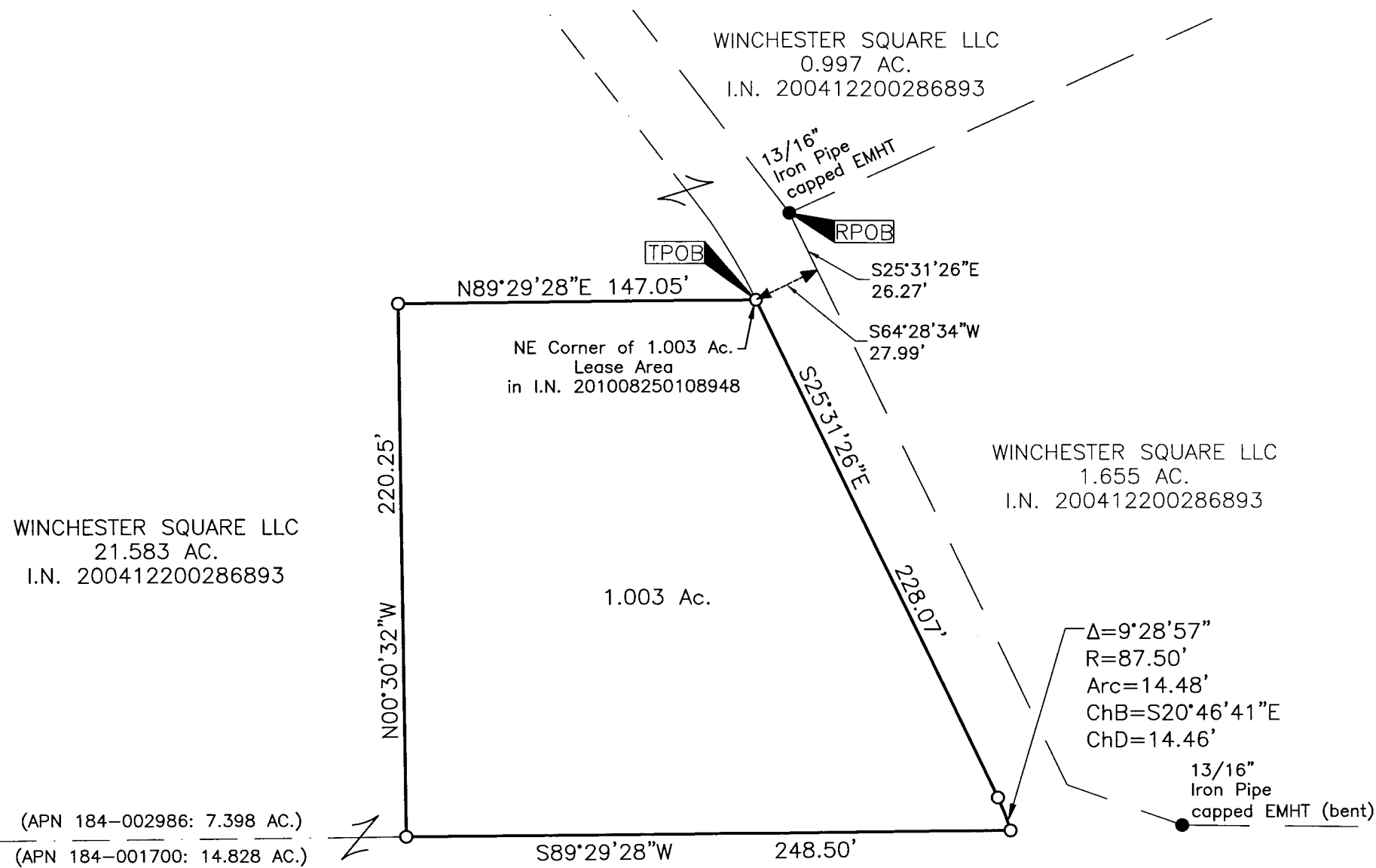
Job No: 2014-1292

RECEIVED

AUG 07 2014

Franklin County Engineer
Dean C. Ringle, P.E., P.S.

J:\2014\1292\DWG\04SHEETS\BOUNDARY\20141292-VS-BNDY-02.DWG plotted by DODGION, JOHN on 8/7/2014 9:58:46 AM last saved by JODDGIION on 8/6/2014 9:43:30 AM



- = STONE FND.
- = MON. FND.
- = I.P. FND.
- = I.P. SET
- = MAG. NAIL FND.
- = MAG. NAIL SET
- ▲ = R.R. SPK. FND.
- △ = R.R. SPK. SET
- ◆ = P.K. NAIL FND.

I.P. Set are 13/16" I.D. iron pipe with cap inscribed EMHT INC



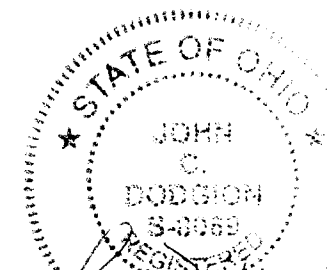
GRAPHIC SCALE (in feet)

SURVEY NOTE:

This survey was prepared using documents of record, prior plats of survey, and observed evidence located by an actual field survey.

BASIS OF BEARINGS:

The bearings hereon are based on the westerly right-of-way line of Gender Road (South 4°31'32" East) as called in Official Record 11357F13.



By John C. Dodgion
John C. Dodgion
Professional Surveyor No. 8069

08/07/2014
Date