

F-8-E



Evans, Mechwart, Hambleton & Tilton, Inc.  
Engineers • Surveyors • Planners • Scientists  
5500 New Albany Road, Columbus, OH 43054  
Phone: 614.775.4500 Toll Free: 888.775.3648  
emht.com

# SURVEY OF ACREAGE PARCEL

SECTION 7, TOWNSHIP 5, RANGE 22

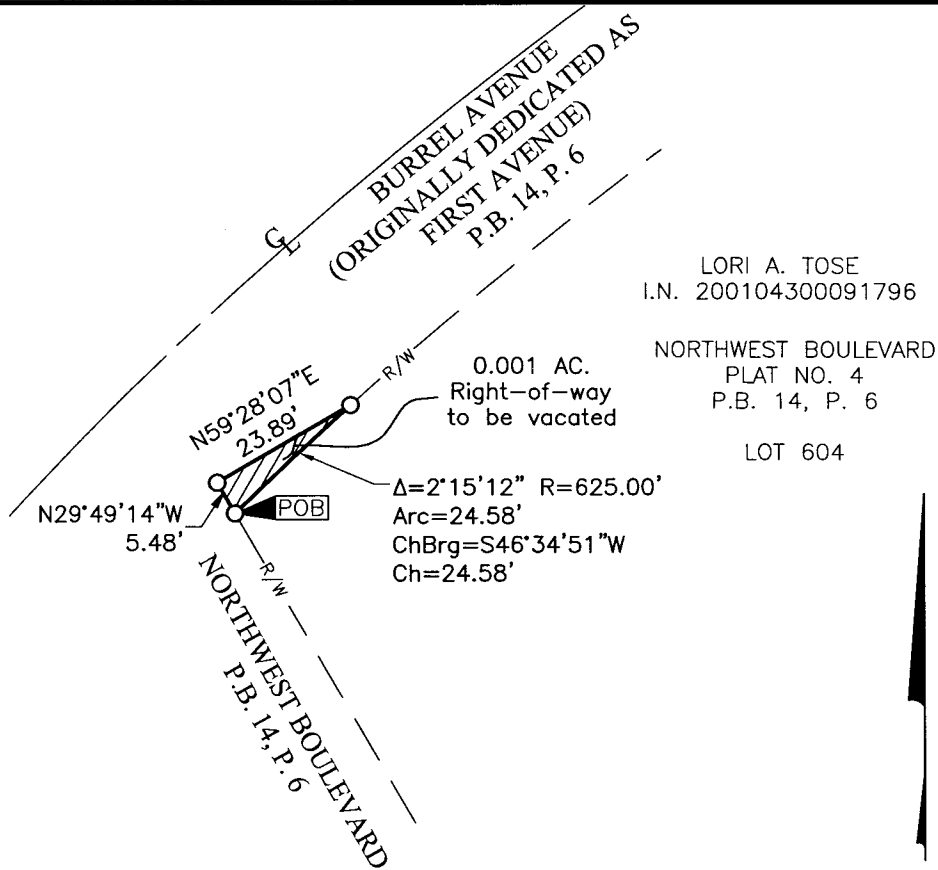
REFUGEE LANDS

CITY OF GRANDVIEW HEIGHTS, COUNTY OF FRANKLIN, STATE OF OHIO

Date: June 24, 2014

Scale: 1" = 30'

Job No. 2014-0258



LORI A. TOSE  
I.N. 200104300091796

NORTHWEST BOULEVARD  
PLAT NO. 4  
P.B. 14, P. 6

LOT 604

### BASIS OF BEARINGS:

The bearings shown hereon are based on the Ohio State Plane Coordinate System, South Zone as per NAD83 (1986 adjustment). Control for the bearings was from coordinates of monuments 5-83 and 4-83, having a bearing of North 00° 22' 10" West, for a portion of the west limited access right-of-way of Olentangy River Road, established by the Franklin County Engineering Department using Global Positioning System procedures and equipment.

### SURVEY NOTE:

This survey was prepared using documents of record, prior plats of survey, and observed evidence located by an actual field survey.

○ = I.P. SET

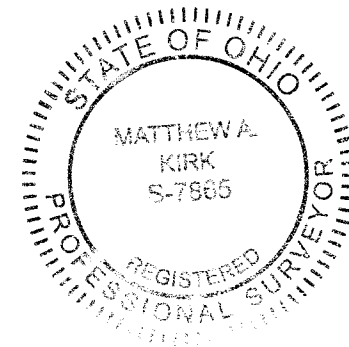
I.P. Set are 13/16" I.D. iron pipe with cap inscribed EMHT INC

= Right-of-way to be vacated

# RECEIVED

JUN 25 2014

Franklin County Engineer  
Dean C. Ringle, P.E., P.S.



GRAPHIC SCALE (in feet)

By Matthew A. Kirk

Matthew A. Kirk  
Professional Surveyor No. 7865

24 JUNE 14

Date