

RECEIVED

AUG 07 2014

6-7-E



Evans, Mechwart, Hambleton & Tilton, Inc.
Engineers • Surveyors • Planners • Scientists
5500 New Albany Road, Columbus, OH 43054
Phone: 614.775.4500 Toll Free: 888.775.3648
emht.com

Franklin County Engineer
Dean C. Ringle, P.E., P.S.

RIGHT-OF-WAY TRANSFER

VIRGINIA MILITARY SURVEY NO. 1388

CITY OF GROVE CITY, COUNTY OF FRANKLIN, STATE OF OHIO

Date: August 4, 2014

Scale: 1" = 40'

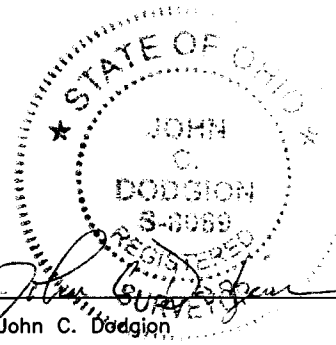
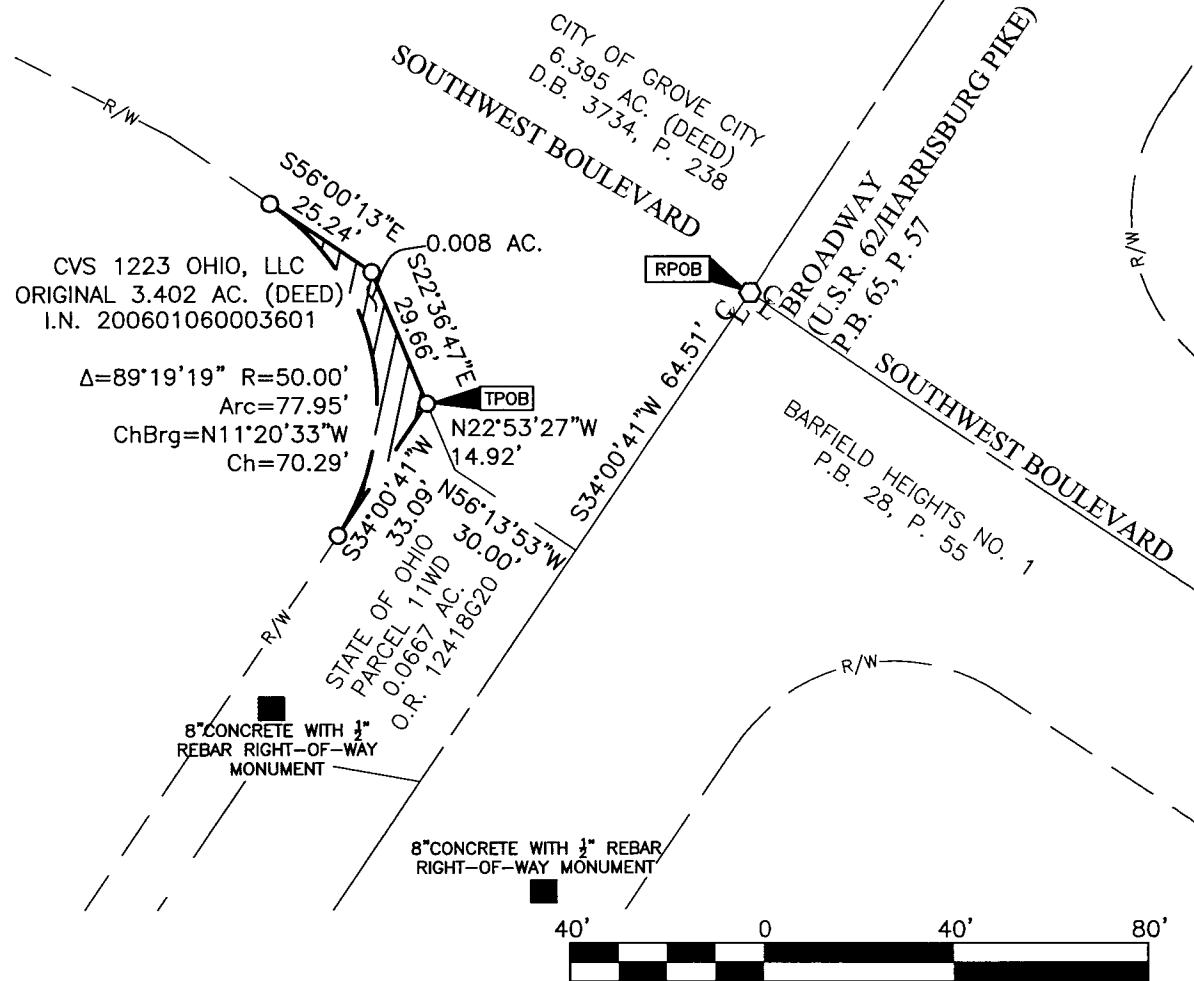
Job No. 2014-0838

BASIS OF BEARING:

Bearings are based on the Ohio State Plane Coordinate System, South Zone, NAD 83 (NSRS 2007). Said coordinates originated from a field traverse which was tied (referenced) to said coordinate system by GPS observations of Franklin County Engineering Department monuments FCGS0024RESET, and FCGS5539. A bearing of South 34° 00' 41" West was held on the centerline of Broadway (U.S.R. 62/Harrisburg Pike) at the intersection with Southwest Boulevard.

- = STONE FND.
- = MON. FND.
- = I.P. FND.
- = I.P. SET
- = MAG. NAIL FND.
- = MAG. NAIL SET
- ▲ = R.R. SPK. FND.
- △ = R.R. SPK. SET
- ◆ = P.K. NAIL FND.

I.P. Set are 13/16" I.D. iron pipe with cap inscribed EMHT INC



By *John C. Dodgion*
John C. Dodgion
Professional Surveyor No. 8069

08/07/2014
Date

This drawing is based on Franklin County Auditor's, Engineer's and Recorder's Records and an actual field survey performed in May 2014.



GRAPHIC SCALE (in feet)