



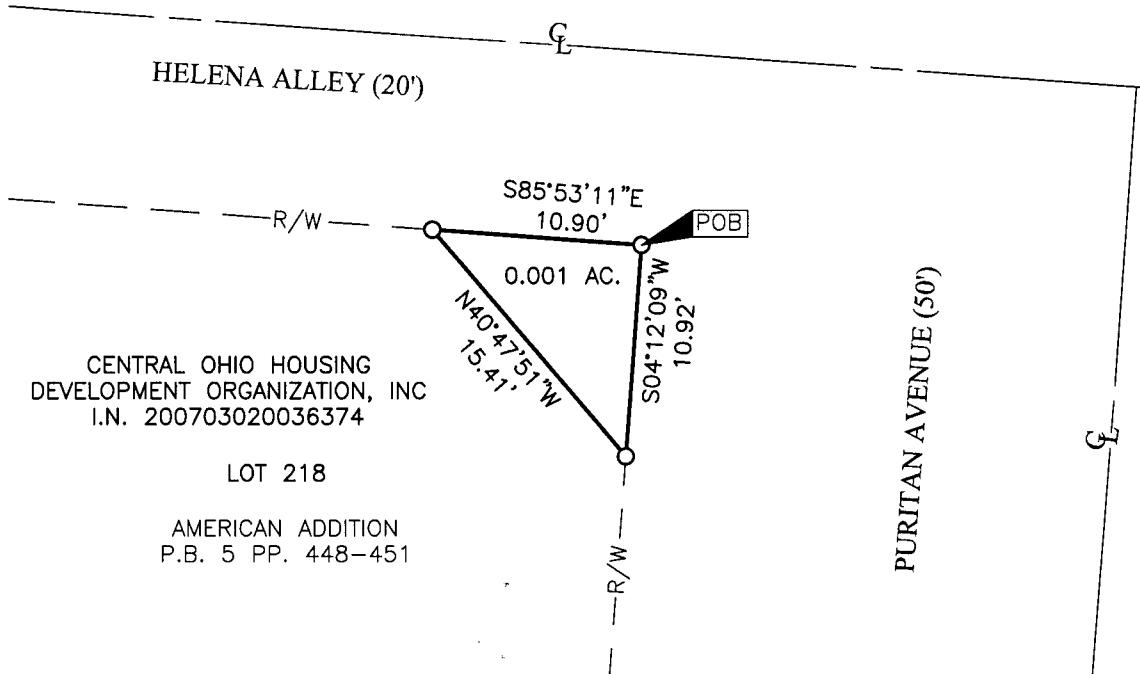
Evans, Mechwart, Hambleton & Tilton, Inc.
 Engineers • Surveyors • Planners • Scientists
 5500 New Albany Road, Columbus, OH 43054
 Phone: 614.775.4500 Toll Free: 888.775.3648
 emht.com

RIGHT-OF-WAY ACQUISITION
 QUARTER TOWNSHIP 4, TOWNSHIP 1, RANGE 18
 UNITED STATES MILITARY LANDS
 CITY OF COLUMBUS, COUNTY OF FRANKLIN, STATE OF OHIO

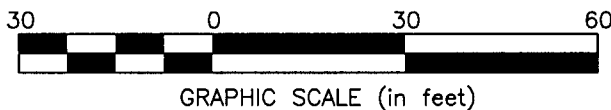
Date: July 9, 2014

Job No. 2013-1389

Scale: 1" = 30'



O = I.P. SET
 I.P. Set are 13/16" I.D. iron pipe with cap inscribed EMHT INC



BASIS OF BEARINGS:

The bearings are based on the Ohio State Plane Coordinate System, South Zone, NAD83 (1986 adjustment). Said bearings originated from a field traverse which was tied (referenced) to said coordinate system by Static GPS observations of Franklin County Engineering Department monuments Frank 43 and Frank 143. The centerline of Joyce Avenue, having a bearing of North 04° 07' 58" East, is designated the "basis of bearing" for this survey.

SURVEY NOTE:

This survey is based on a field survey performed by EMHT, Inc., in February of 2006.



By *Heather L. King* Date 7/10/14
 Heather L. King
 Professional Surveyor No. 8307

Franklin County Engineer
 Dean C. Ringle, P.E., P.S.

JUL 11 2014

RECEIVED

L:\20131389\DWG\04SHEETS\BOUNDARY\20131389-VS-BNDY-RWAY-01.DWG plotted by KING, BRANDON on 7/9/2014 12:41:01 PM last saved by BKING on 7/7/2014 1:07:20 PM Xrefs: