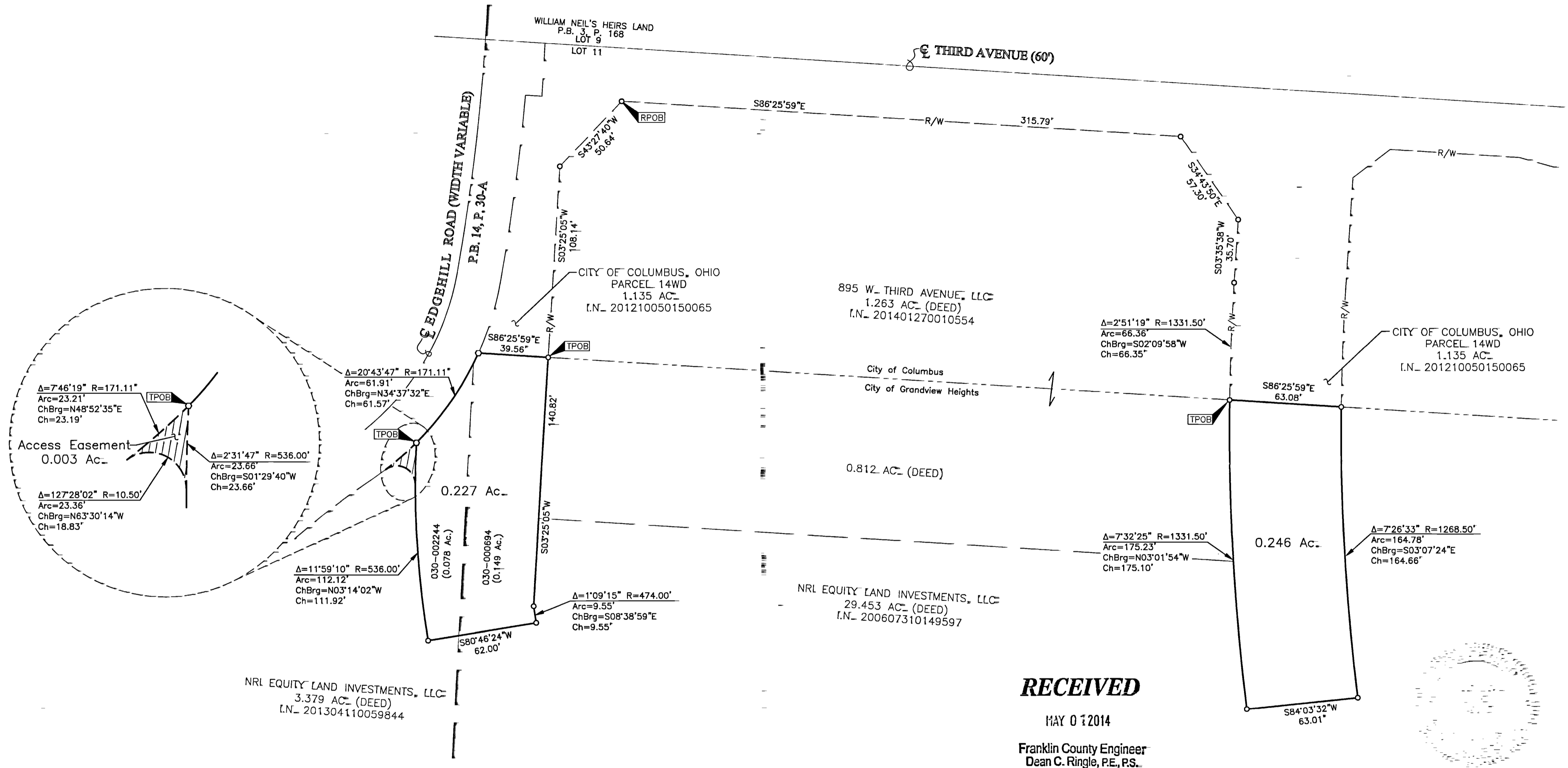


SURVEY OF ACREAGE PARCELS

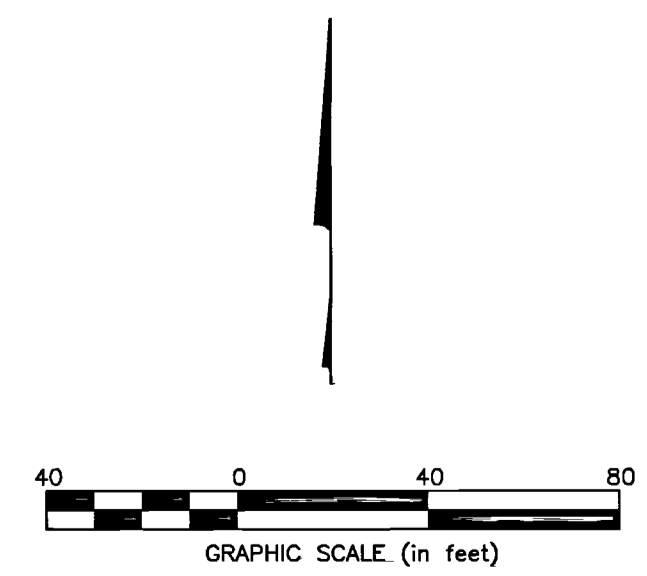
HALF SECTION 6, TOWNSHIP 5, RANGE 22

REFUGEE LANDS

CITY OF GRANDVIEW HEIGHTS, COUNTY OF FRANKLIN, STATE OF OHIO



D:\2013\2013\DWG\CASHIERS BOUNDARY 20132003-VS-BNDY-RWAY-PHS4.DWG plotted by PITCHARD, IN on 4/30/2014 12:21:45 PM last saved by JMASTON on 4/30/2014 11:14:42 AM



- = STONE FND.
 - = MON. FND.
 - = I.P. FND.
 - = I.P. SET
 - = MAG. NAIL FND.
 - = MAG. NAIL SET
 - ▲ = R.R. SPK. FND.
 - △ = R.R. SPK. SET
 - ◆ = P.K. NAIL FND.
- I.P. Set are 13/16" I.D. iron pipe with cap inscribed EMHT INC

BASIS OF BEARINGS=
Bearings are based on the Ohio State Plane Coordinate System, South Zone, as per NAD83 (1986 adjustment). Control for bearings was from coordinates of monuments 5-83 & 4-83, having a bearing of North 00° 22' 10" West, for the west limited access right-of-way line of Olentangy River Road, established by the Franklin County Engineering Department, using Global Positioning System procedures and equipment.

SURVEY NOTE=
This survey was prepared using documents of record, prior plats of survey, and observed evidence located by an actual field survey.

By Matthew J. Cich 30 APR 14
Professional Surveyor No. 7865 Date

EMHT Evans, Mechwart, Hambleton & Tilton, Inc. Engineers • Surveyors • Planners • Scientists 5500 New Albany Road, Columbus, OH 43054 Phone: 614.775.4500 Toll Free: 888.775.3648 emht.com		Date: 4/30/2014
		Scale: 1" = 40'
		Job No: 20132003
		Sheet: 1 of 1
REVISIONS		
MARK	DATE	DESCRIPTION