

G-2-L



Evans, Mechwart, Hambleton & Tilton, Inc.
Engineers • Surveyors • Planners • Scientists
5500 New Albany Road, Columbus, OH 43054
Phone: 614.775.4300 Toll Free: 888.775.3648
emht.com

SURVEY OF ACREAGE PARCEL

SECTION 8, TOWNSHIP 5, RANGE 22

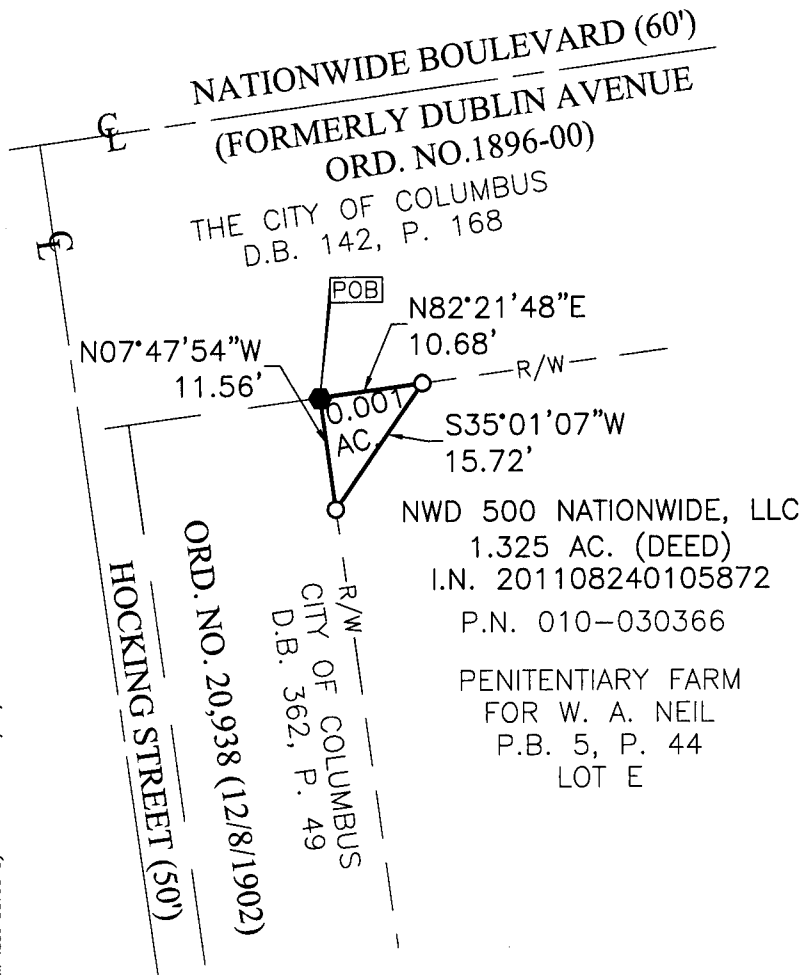
REFUGEE LANDS

CITY OF COLUMBUS, COUNTY OF FRANKLIN, STATE OF OHIO

Date: February 26, 2014

Job No. 2012-1665

Scale: 1" = 20'



RECEIVED

FEB 27 2014

Franklin County Engineer
Dean C. Ringle, P.E., P.S.

SURVEY NOTE:

This survey was prepared using documents of record, prior plats of survey, and observed evidence located by an actual field survey.

BASIS OF BEARINGS:

Bearings are based on the north right of way line of Nationwide Boulevard, having a bearing of North 82°18' 16" East, as per Ohio State Plane Coordinate System, South Zone NAD83 (1986 Adjustment).

- = MAG. NAIL FND.
- = I.P. FND.
- = I.P. SET

I.P. Set are 13/16" I.D. iron pipe with cap inscribed EMHT INC



GRAPHIC SCALE (in feet)

By Matthew A. Kirk
Matthew A. Kirk
Professional Surveyor No. 7865

26 FEB 14

J:\2012\1665\DWG\045SHEETS\BOUNDARY\20121665-VS-BNDY-RWAY-02.DWG plotted by OIMAS, JACOB on 2/26/2014 10:52:07 AM last saved by JOIMAS on 2/26/2014 10:51:56 AM