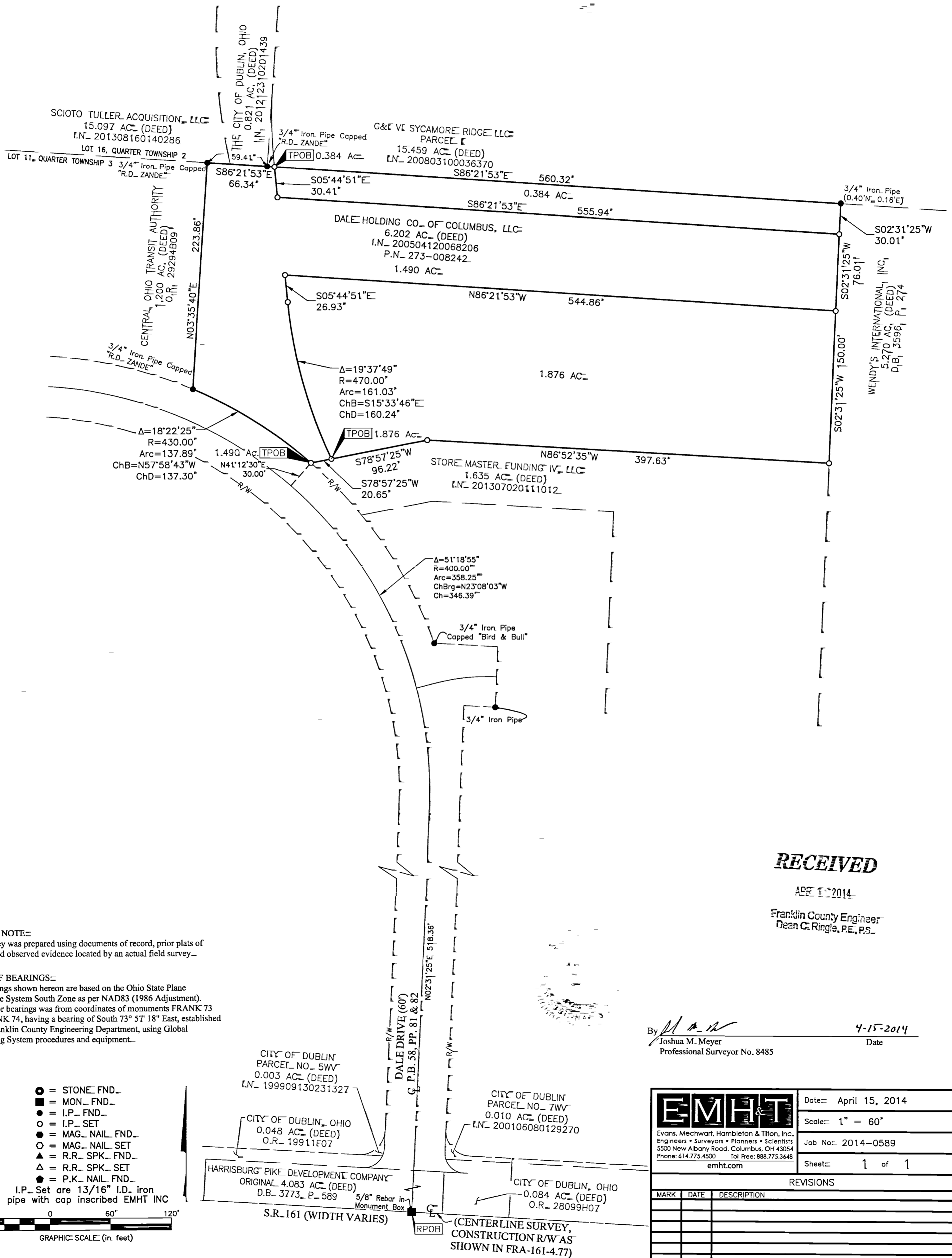


SURVEY OF ACREAGE PARCELS

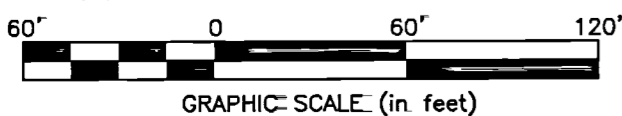
LOT 11, QUARTER TOWNSHIP 3, TOWNSHIP 2, RANGE 19
 UNITED STATES MILITARY LANDS
 CITY OF DUBLIN, COUNTY OF FRANKLIN, STATE OF OHIO



SURVEY NOTE:
 This survey was prepared using documents of record, prior plats of survey, and observed evidence located by an actual field survey.

BASIS OF BEARINGS:
 The Bearings shown hereon are based on the Ohio State Plane Coordinate System South Zone as per NAD83 (1986 Adjustment). Control for bearings was from coordinates of monuments FRANK 73 and FRANK 74, having a bearing of South 73° 57' 18" East, established by the Franklin County Engineering Department, using Global Positioning System procedures and equipment.

- = STONE FND.
 - = MON. FND.
 - = I.P. FND.
 - = I.P. SET
 - = MAG. NAIL FND.
 - = MAG. NAIL SET
 - ▲ = R.R. SPK. FND.
 - △ = R.R. SPK. SET
 - ◆ = P.K. NAIL FND.
 - ◆ = P.K. NAIL SET
- I.P. Set are 13/16" I.D. iron pipe with cap inscribed EMHT INC



RECEIVED

APR 15 2014

Franklin County Engineer
 Dean C. Ringle, P.E., P.S.

By *Joshua M. Meyer*
 Joshua M. Meyer
 Professional Surveyor No. 8485

4-15-2014
 Date

EMHT		Date: April 15, 2014
Evans, Mechwart, Hambleton & Tillon, Inc. Engineers • Surveyors • Planners • Scientists 5500 New Albany Road, Columbus, OH 43054 Phone: 614.775.4500 Toll Free: 888.775.3648 emht.com		Scale: 1" = 60'
		Job No.: 2014-0589
		Sheet: 1 of 1
REVISIONS		
MARK	DATE	DESCRIPTION