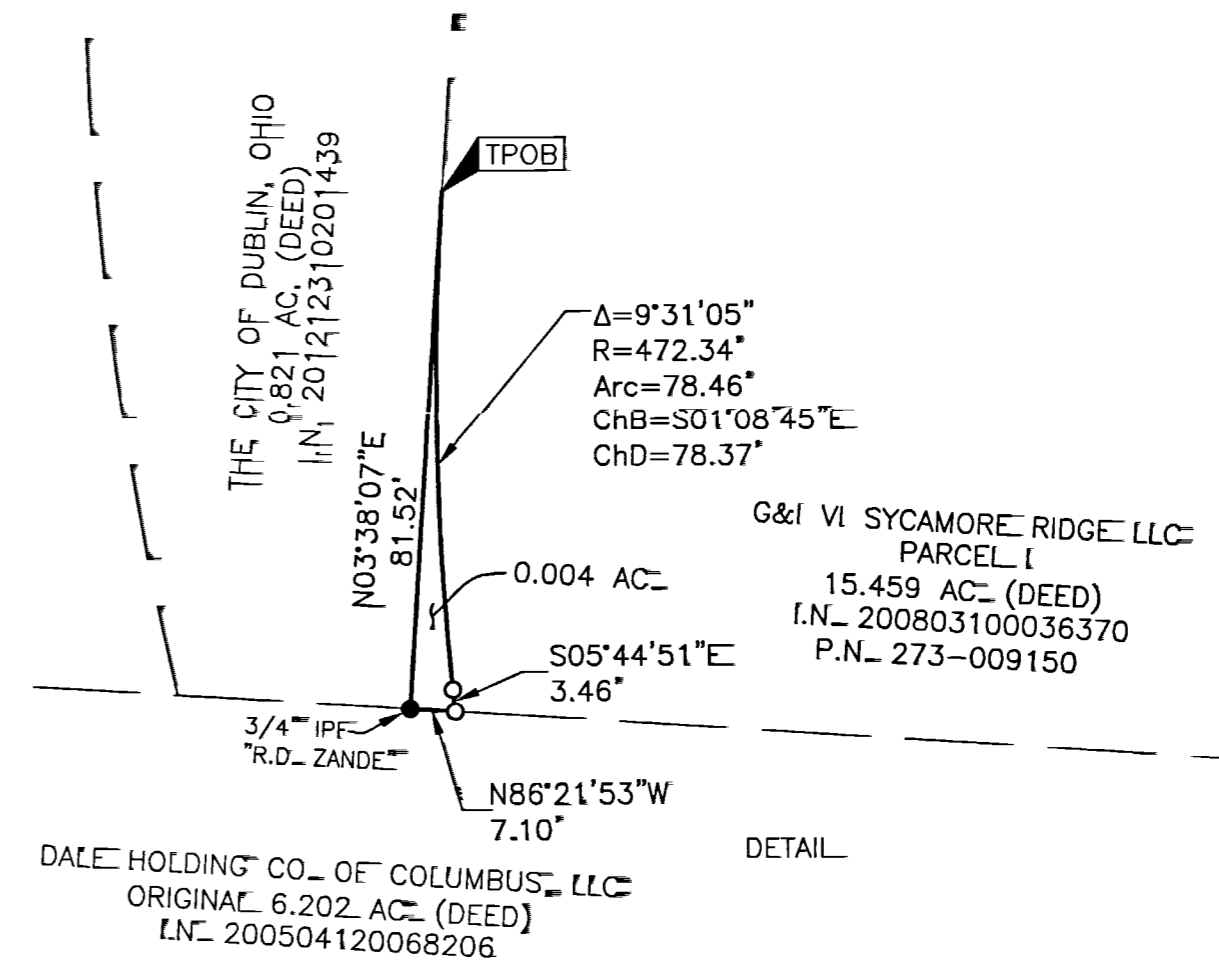
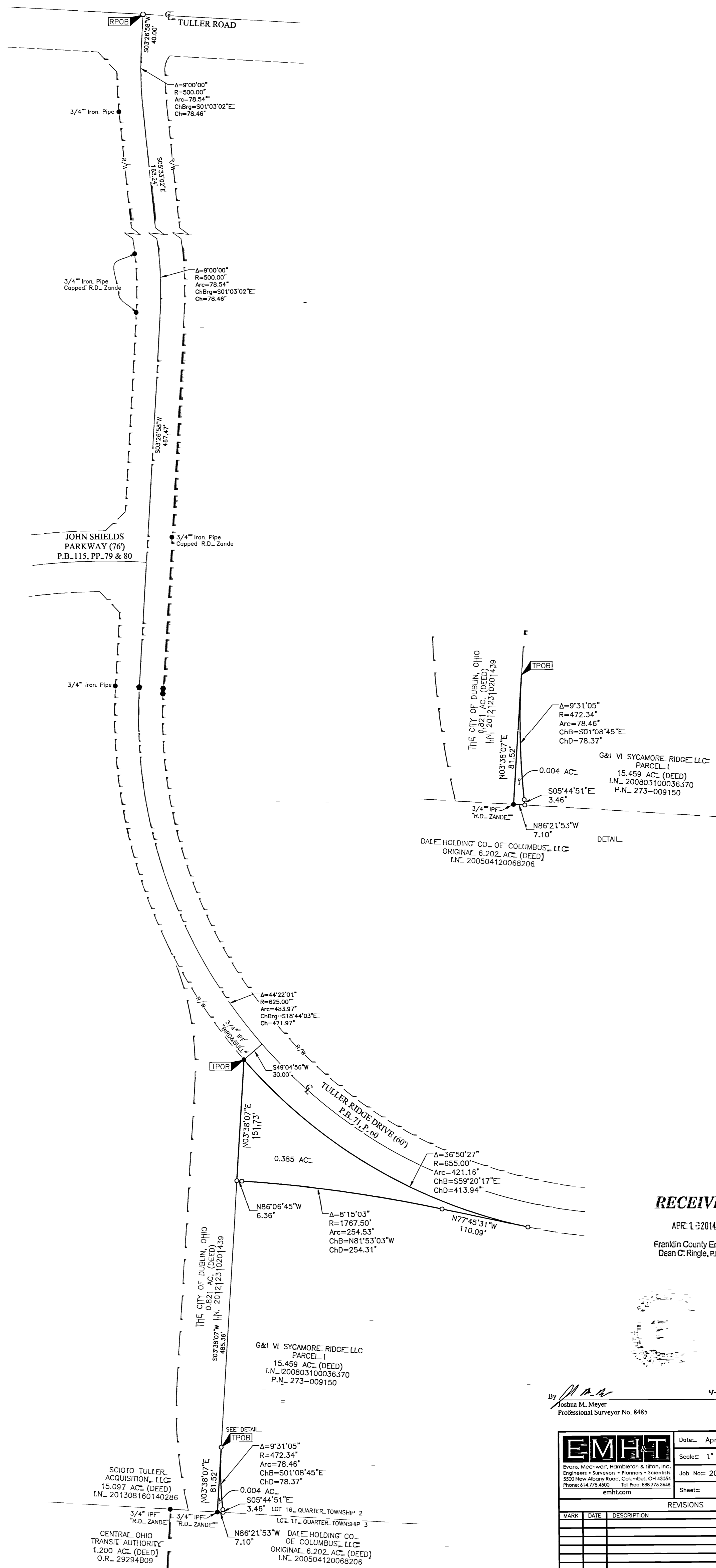


SURVEY OF ACREAGE PARCELS

LOT 16, QUARTER TOWNSHIP 2, TOWNSHIP 2, RANGE 19
 UNITED STATES MILITARY LANDS
 CITY OF DUBLIN, COUNTY OF FRANKLIN, STATE OF OHIO

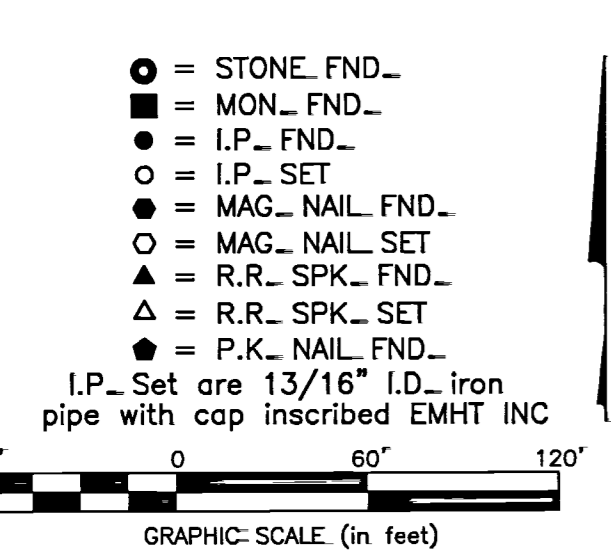


RECEIVED
 APR 16 2014
 Franklin County Engineer
 Dean C. Ringle, P.E., P.S.

By *J.M.M.* 4-15-2014
 Joshua M. Meyer Date
 Professional Surveyor No. 8485

SURVEY NOTE=
 This survey was prepared using documents of record, prior plats of survey, and observed evidence located by an actual field survey.

BASIS OF BEARINGS=
 The Bearings shown hereon are based on the Ohio State Plane Coordinate System South Zone as per NAD83 (1986 Adjustment). Control for bearings was from coordinates of monuments FRANK 73 and FRANK 74, having a bearing of South 73° 57' 18" East, established by the Franklin County Engineering Department, using Global Positioning System procedures and equipment.



EMHT		Date: April 15, 2014
Evans, Mechwart, Hamblen & Hillon, Inc. Engineers • Surveyors • Planners • Scientists 5500 New Albany Road, Columbus, OH 43054 Phone: 614.775.4500 Toll Free: 888.775.3648 emht.com		Scale: 1" = 60'
		Job No: 2014-0589
		Sheet: 1 of 1
REVISIONS		
MARK	DATE	DESCRIPTION