



Evans, Mechwart, Hambleton & Tilton, Inc.
 Engineers • Surveyors • Planners • Scientists
 5500 New Albany Road, Columbus, OH 43054
 Phone: 614.775.4500 Toll Free: 888.775.3648

emht.com

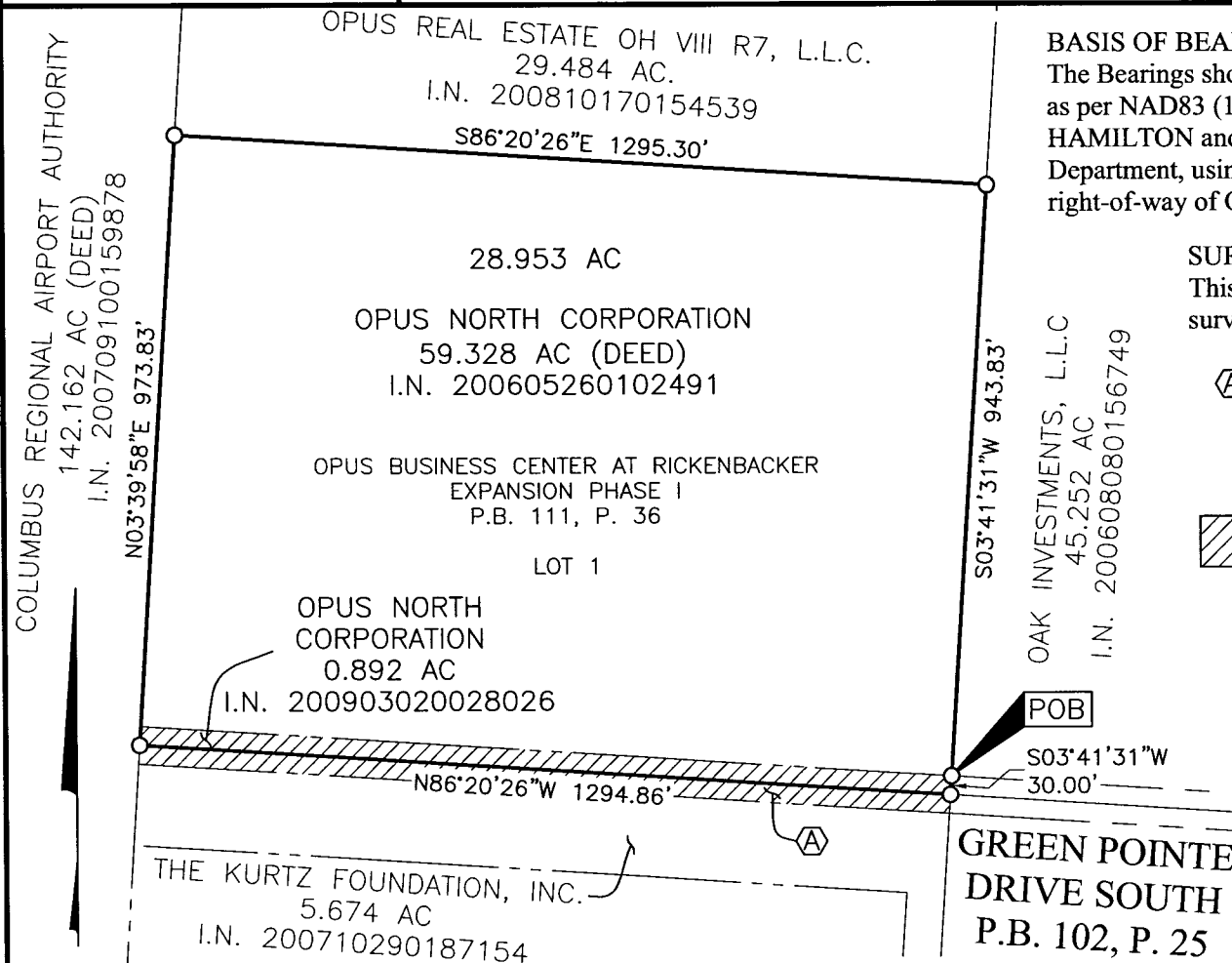
SURVEY OF ACREAGE PARCEL

SECTION 30, TOWNSHIP 11, RANGE 21
 BUCKINGHAM'S SURVEY OF CONGRESS LANDS
 CITY OF GROVEPORT, COUNTY OF FRANKLIN, STATE OF OHIO

Date: March 17, 2014

Scale: 1" = 300'

Job No. 2013-2089



BASIS OF BEARINGS:

The Bearings shown hereon are based on the Ohio State Plane Coordinate System (South Zone) as per NAD83 (1986 Adjustment). Control for bearings was from coordinates of monuments HAMILTON and HAMILTON AZIMUTH, established by the Franklin County Engineering Department, using Global Positioning System procedures and equipment. A portion of the right-of-way of Opus Drive has a calculated bearing of North 03° 39' 34" East.

SURVEY NOTE:

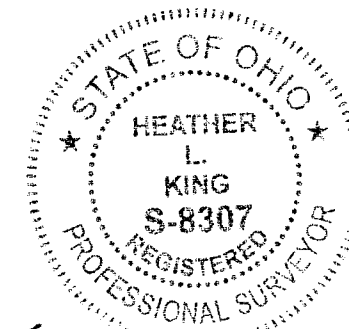
This survey was prepared using documents of record, prior plats of survey, and observed evidence located by an actual field survey.



THE KURTZ FOUNDATION, INC.
 0.892 AC
 I.N. 200903020028026



GREEN POINTE DRIVE SOUTH
 P.B. 111, P. 36
 VACATED BY GROVEPORT
 ORD. NO. 08-062
 I.N. 200903020028026



By Heather L. King Date 4/21/14
 Heather L. King
 Professional Surveyor No. 8307



GRAPHIC SCALE (in feet)

J:\20132089\DWG\04SHEETS\BOUNDARY\20132089-VS-BNDY-01.DWG plotted by KING, HEATHER on 3/19/2014 3:32:00 PM last saved by HKING on 3/18/2014 8:51:23 AM
 Xrefs: 20130210ALTA.DWG

RECEIVED

APR 21 2014

Franklin County Engineer
 Dean C. Ringle, P.E., P.S.