



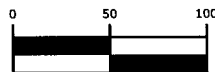
GLOBAL INTELLIGENCE.  
LOCAL KNOWLEDGE.

635 Brooksedge Boulevard  
Westerville, OH 43081  
Contact: BOB WYND  
614-818-4900  
Fax: 614-818-4901  
www.ibigroup.com

# ADJACENT PROPERTY TRANSFER EXHIBIT

MARY E. TEDROW  
MADISON TOWNSHIP,  
FRANKLIN COUNTY, OHIO

GRAPHIC SCALE



( IN FEET )

1 inch = 100 ft.



## STATE OF OHIO, COUNTY OF FRANKLIN, TOWNSHIP OF MADISON, SOUTHEAST QUARTER OF SECTION 27, TOWNSHIP 11, RANGE 21, CONGRESS LANDS

# RECEIVED

FEB 07 2014

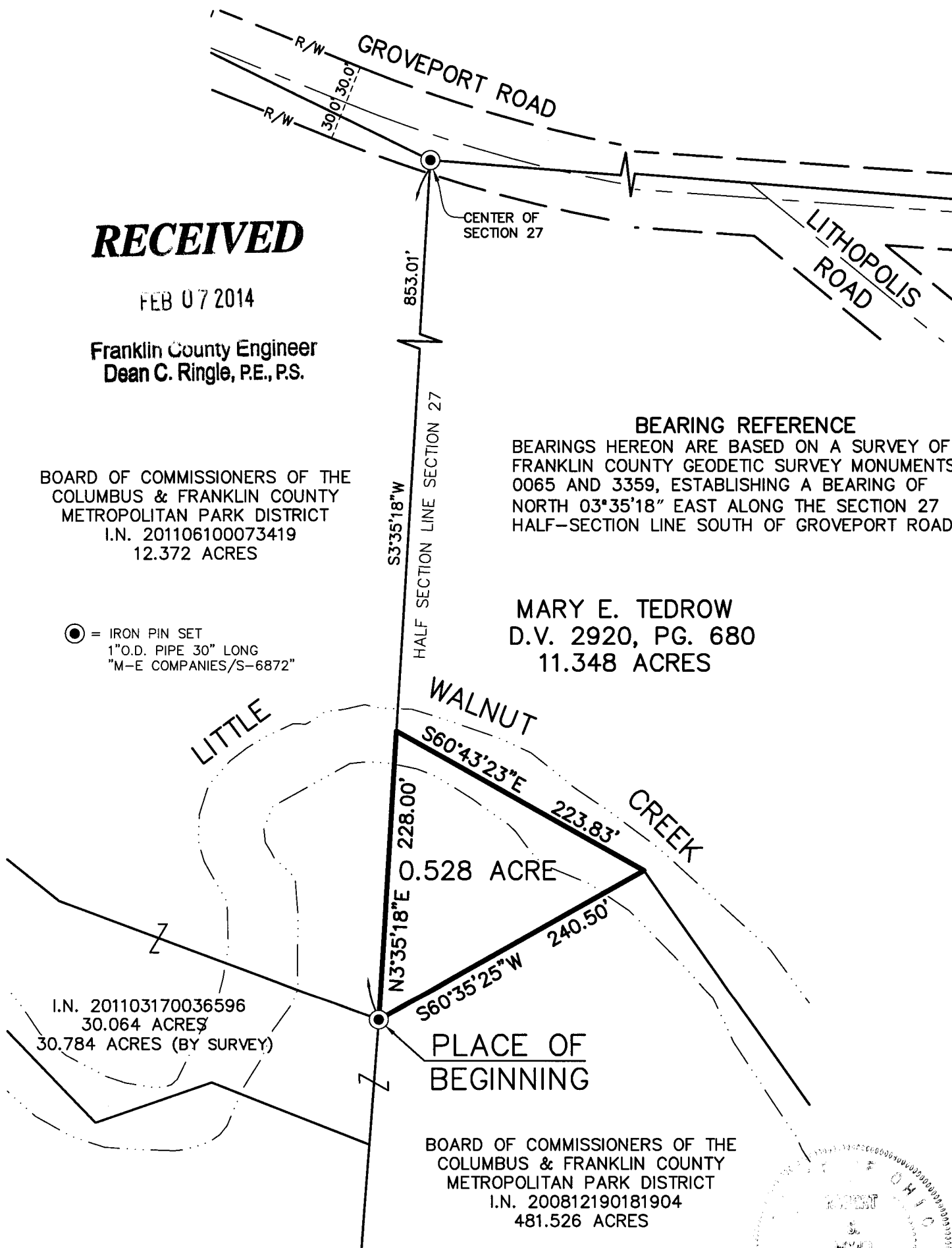
Franklin County Engineer  
Dean C. Ringle, P.E., P.S.

BOARD OF COMMISSIONERS OF THE  
COLUMBUS & FRANKLIN COUNTY  
METROPOLITAN PARK DISTRICT  
I.N. 201106100073419  
12.372 ACRES

● = IRON PIN SET  
1" O.D. PIPE 30" LONG  
"M-E COMPANIES/S-6872"

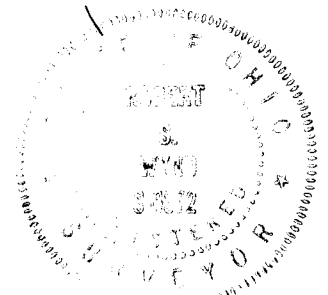
**BEARING REFERENCE**  
BEARINGS HEREON ARE BASED ON A SURVEY OF  
FRANKLIN COUNTY GEODETIC SURVEY MONUMENTS  
0065 AND 3359, ESTABLISHING A BEARING OF  
NORTH 03°35'18" EAST ALONG THE SECTION 27  
HALF-SECTION LINE SOUTH OF GROVEPORT ROAD

MARY E. TEDROW  
D.V. 2920, PG. 680  
11.348 ACRES



I.N. 201103170036596  
30.064 ACRES  
30.784 ACRES (BY SURVEY)

BOARD OF COMMISSIONERS OF THE  
COLUMBUS & FRANKLIN COUNTY  
METROPOLITAN PARK DISTRICT  
I.N. 200812190181904  
481.526 ACRES



*Bob Wynd*  
REGISTERED SURVEYOR NO. 6872 DATE 2/7/14