

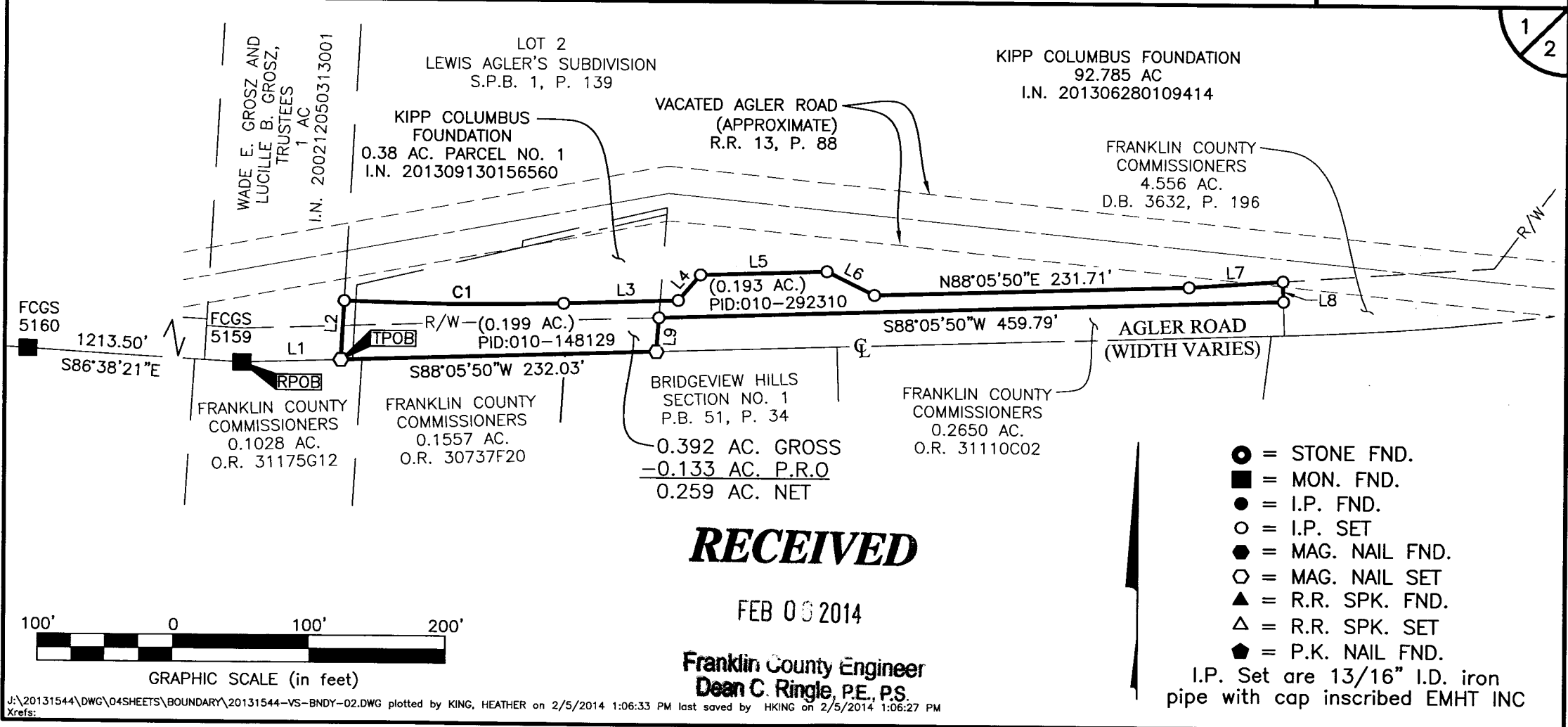


Evans, Mechwart, Hambleton & Tilton, Inc.
 Engineers • Surveyors • Planners • Scientists
 5500 New Albany Road, Columbus, OH 43054
 Phone: 614.775.4500 Toll Free: 888.775.3648
 emht.com

SURVEY OF ACREAGE PARCEL

QUARTER TOWNSHIP 2, TOWNSHIP 1, RANGE 17
 UNITED STATES MILITARY LANDS
 CITY OF COLUMBUS, COUNTY OF FRANKLIN, STATE OF OHIO

Date:	January 24, 2014
Scale:	1" = 100'
Job No.	2013-1544



RECEIVED

FEB 08 2014

Franklin County Engineer
 Dean C. Ringle, P.E., P.S.

J:\20131544\DWG\04SHEETS\BOUNDARY\20131544-VS-BNDY-02.DWG plotted by KING, HEATHER on 2/5/2014 1:06:33 PM last saved by HKING on 2/5/2014 1:06:27 PM



Evans, Mechwart, Hambleton & Tilton, Inc.
 Engineers • Surveyors • Planners • Scientists
 5500 New Albany Road, Columbus, OH 43054
 Phone: 614.775.4500 Toll Free: 888.775.3648
 emht.com

SURVEY OF ACREAGE PARCEL

QUARTER TOWNSHIP 2, TOWNSHIP 1, RANGE 17

UNITED STATES MILITARY LANDS

CITY OF COLUMBUS, COUNTY OF FRANKLIN, STATE OF OHIO

Date: January 24, 2014

Scale: 1" = 100'

Job No. 2013-1544

2/2

Line Table		
Line	Bearing	Distance
L1	N88°05'50"E	72.86'
L2	N03°05'47"E	43.70'
L3	N88°05'50"E	84.58'
L4	N40°21'57"E	25.00'
L5	N88°05'50"E	92.79'
L6	S63°42'10"E	39.15'
L7	N86°01'58"E	69.42'
L8	S01°54'10"E	15.00'
L9	S04°05'51"W	25.14'

RECEIVED

FEB 03 2014

Franklin County Engineer
 Dean C. Ringle, P.E., P.S.

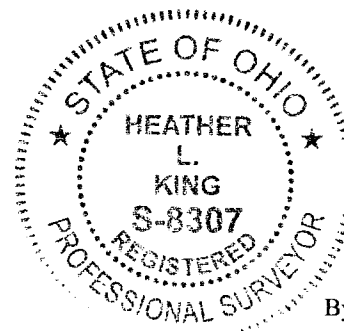
BASIS OF BEARINGS:

The Bearings shown hereon are based on the Ohio State Plane Coordinate System (North/South Zone) as per NAD83 (1986 Adjustment). Control for bearings was from coordinates of monuments FRANK 64 and FRANK 164, having a bearing of North 54° 15' 02" West, established by the Franklin County Engineering Department, using Global Positioning System procedures and equipment.

SURVEY NOTE:

This survey was prepared using documents of record, prior plats of survey, and observed evidence located by an actual field survey.

Curve Table					
Curve	Delta	Radius	Arc Length	Ch. Brg.	Ch. Dist.
C1	4°17'36"	2148.74'	161.01'	S89°45'22"E	160.97'



By Heather L. King Date 2/5/14
 Heather L. King
 Professional Surveyor No. 8307