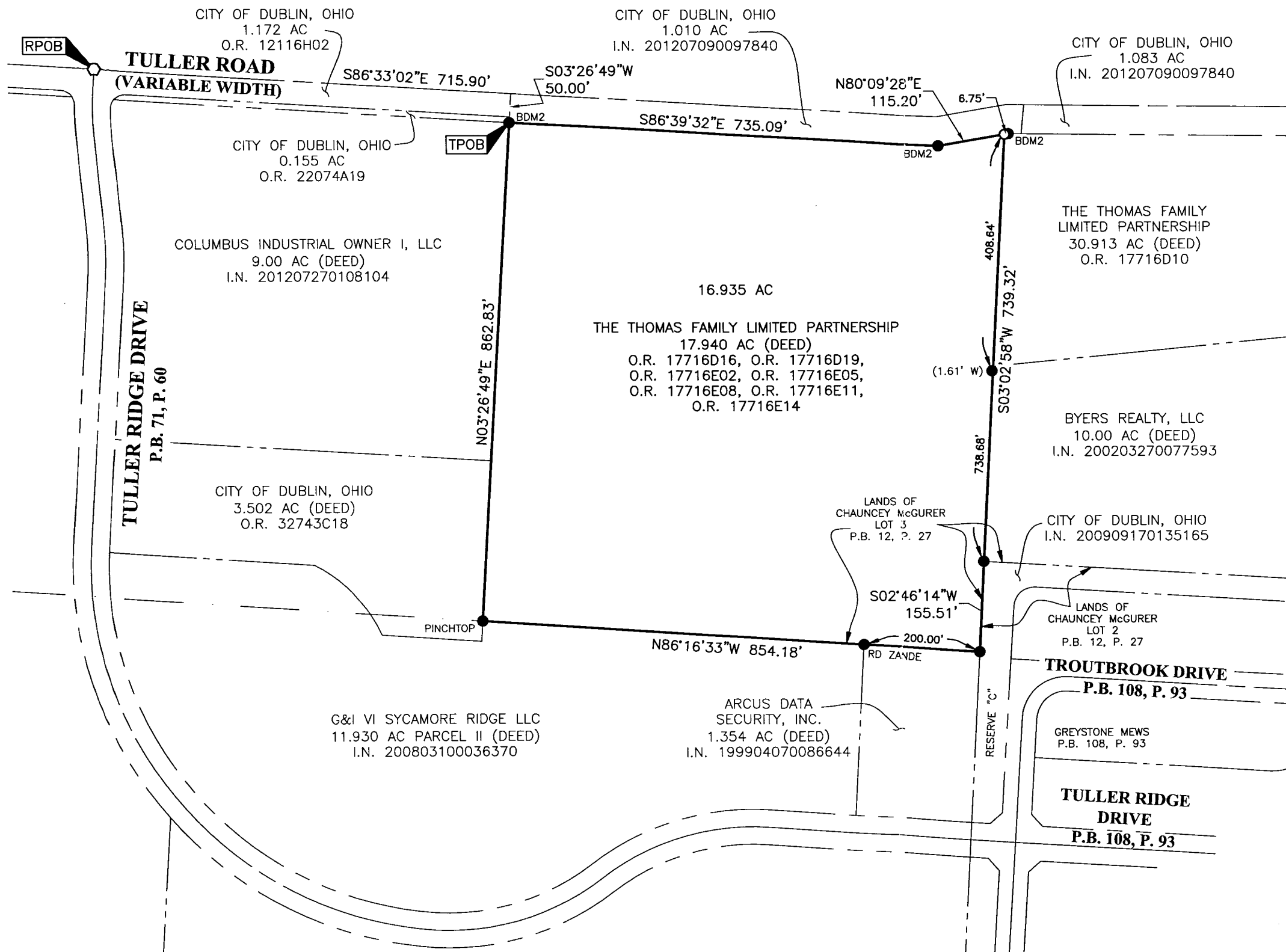


SURVEY OF ACREAGE PARCEL
LOT 16, QUARTER TOWNSHIP 2, TOWNSHIP 2, RANGE 19
UNITED STATES MILITARY LANDS
CITY OF DUBLIN, COUNTY OF FRANKLIN, STATE OF OHIO

Date: December 26, 2013

Scale: 1" = 200'

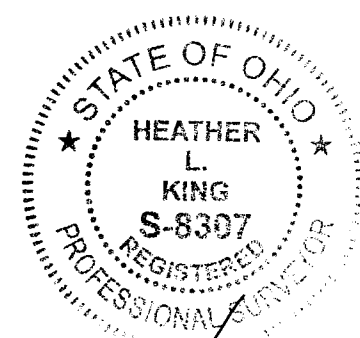
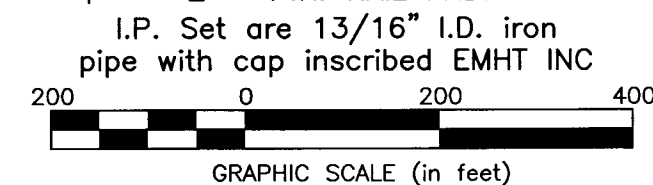
Job No: 2013-1546



BASIS OF BEARINGS:
 The Bearings shown hereon are based on the Ohio State Plane Coordinate System South Zone as per NAD83 (1986 Adjustment). Control for bearings was from coordinates of monuments FRANK 73 and FRANK 174, established by the Franklin County Engineering Department, using Global Positioning System procedures and equipment, giving a bearing of South 03° 26' 58" West for a portion of Tuller Ridge Drive.

SURVEY NOTE:
 This survey was prepared using documents of record, prior plats of survey, and observed evidence located by an actual field survey.

- = STONE FND.
- = MON. FND.
- = 3/4" I.P. FND.
CAPPED AS NOTED
- = I.P. SET
- = MAG. NAIL FND.
- = MAG. NAIL SET
- ▲ = R.R. SPK. FND.
- △ = R.R. SPK. SET
- ◆ = P.K. NAIL FND.



RECEIVED

DEC 26 2013

Franklin County Engineer
 Dean C. Ringle, P.E., P.S.

By *Heather L. King* 12/26/13
 Heather L. King
 Professional Surveyor No. 8307
 Date

J:\20131546\DWG\04SHEETS\BOUNDARY\20131546-VS-BNDY-01.DWG plotted by KING, HEATHER on 12/26/2013 10:28:09 AM last saved by KING on 12/26/2013 10:26:55 AM