

SURVEY OF ACREAGE PARCEL

SECTION 1, TOWNSHIP 10, RANGE 21

BUCKINGHAM'S SURVEY OF CONGRESS LANDS

VILLAGE OF LITHOPOLIS AND CITY OF CANAL WINCHESTER, COUNTY OF FRANKLIN, STATE OF OHIO

Date: January 15, 2014

Scale: 1" = 100'

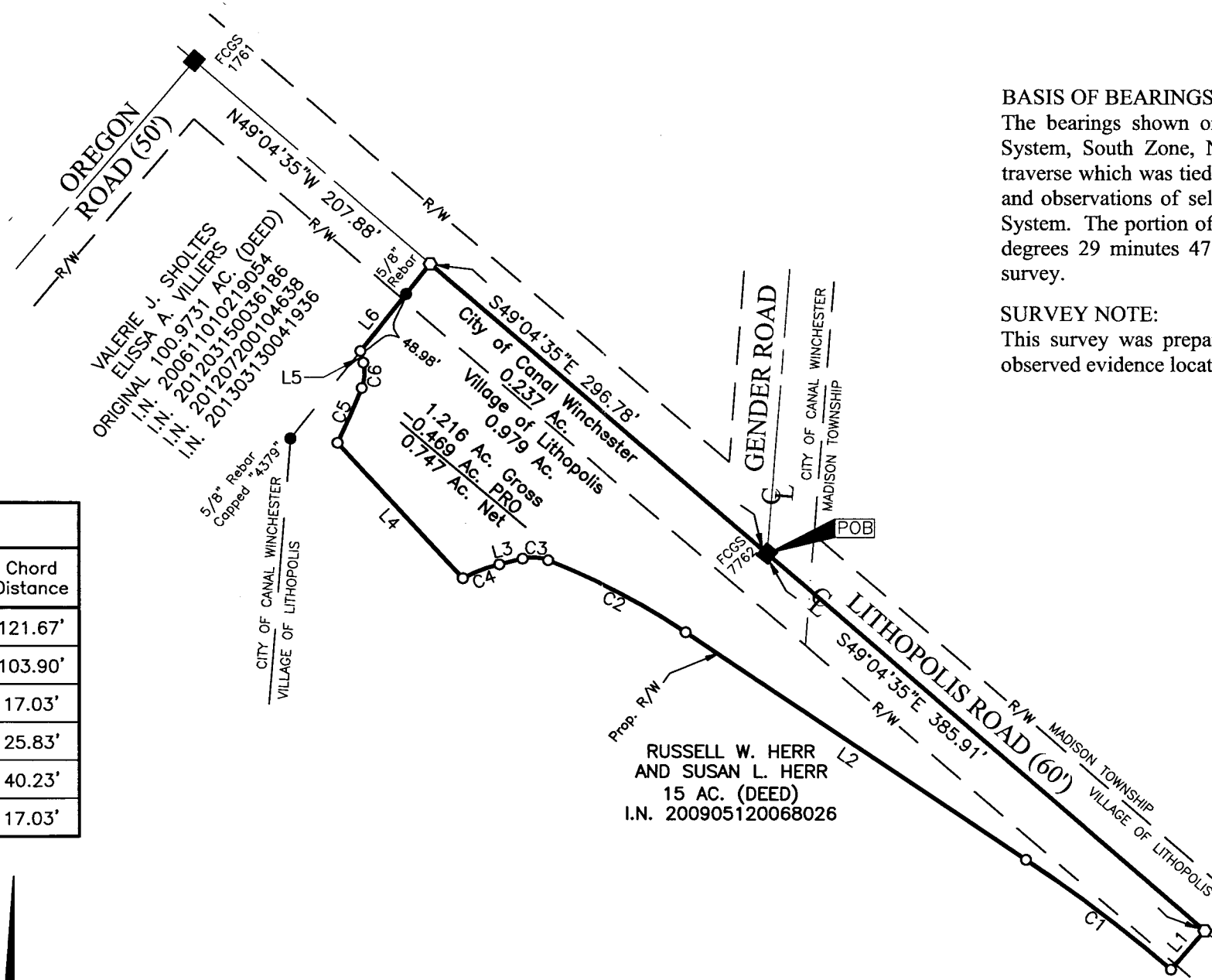
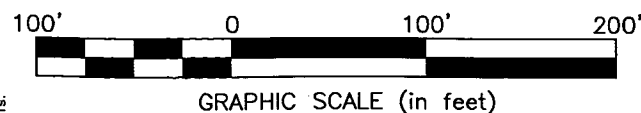
Job No: 2012-1969

Line Table		
Line Number	Direction	Length
L1	S40°55'25"W	34.53'
L2	N56°07'16"W	272.92'
L3	S75°59'35"W	15.94'
L4	N42°27'46"W	123.57'
L5	N14°00'25"W	8.02'
L6	N38°36'01"E	74.85'

Curve Table					
Curve Number	Delta	Radius	Length	Chord Bearing	Chord Distance
C1	6°57'15"	1003.02'	121.74'	N52°38'38"W	121.67'
C2	12°28'45"	478.00'	104.11'	N62°21'39"W	103.90'
C3	35°24'24"	28.00'	17.30'	N86°18'13"W	17.03'
C4	14°24'22"	103.00'	25.90'	S68°47'23"W	25.83'
C5	4°49'25"	478.00'	40.24'	N23°48'41"E	40.23'
C6	35°24'24"	28.00'	17.30'	N03°41'47"E	17.03'

- = MON. FND.
- = I.P. FND.
- = I.P. SET
- = MAG. NAIL FND.
- = MAG. NAIL SET

I.P. Set are 13/16" I.D. iron pipe with cap inscribed EMHT INC



BASIS OF BEARINGS:

The bearings shown on this plat are based on the Ohio State Plane Coordinate System, South Zone, NAD83 (CORS96). Said bearings originated from a field traverse which was tied (referenced) to said coordinate system by GPS observations and observations of selected CORS base stations in the National Spatial Reference System. The portion of the centerline of Gender Road, having a bearing of North 4 degrees 29 minutes 47 seconds East is designated the "basis of bearing" for this survey.

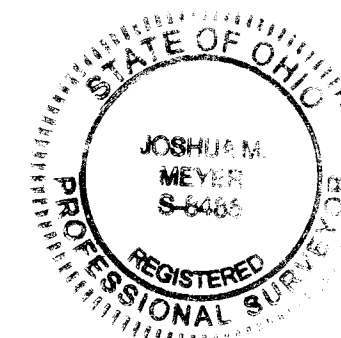
SURVEY NOTE:

This survey was prepared using documents of record, prior plats of survey, and observed evidence located by an actual field survey.

RECEIVED

JAN 17 2014

Franklin County Engineer
 Dean C. Ringle, P.E., P.S.



By *J. M. Meyer*
 Joshua M. Meyer
 Professional Surveyor No. 8485

1-15-2014
 Date