



Evans, Mechwart, Hambleton & Tilton, Inc.
 Engineers • Surveyors • Planners • Scientists
 5500 New Albany Road, Columbus, OH 43054
 Phone: 614.775.4500 Toll Free: 888.775.3648

emht.com

SURVEY OF ACREAGE PARCEL

LOT 7, QUARTER TOWNSHIP 1, TOWNSHIP 2, RANGE 17

UNITED STATES MILITARY LANDS

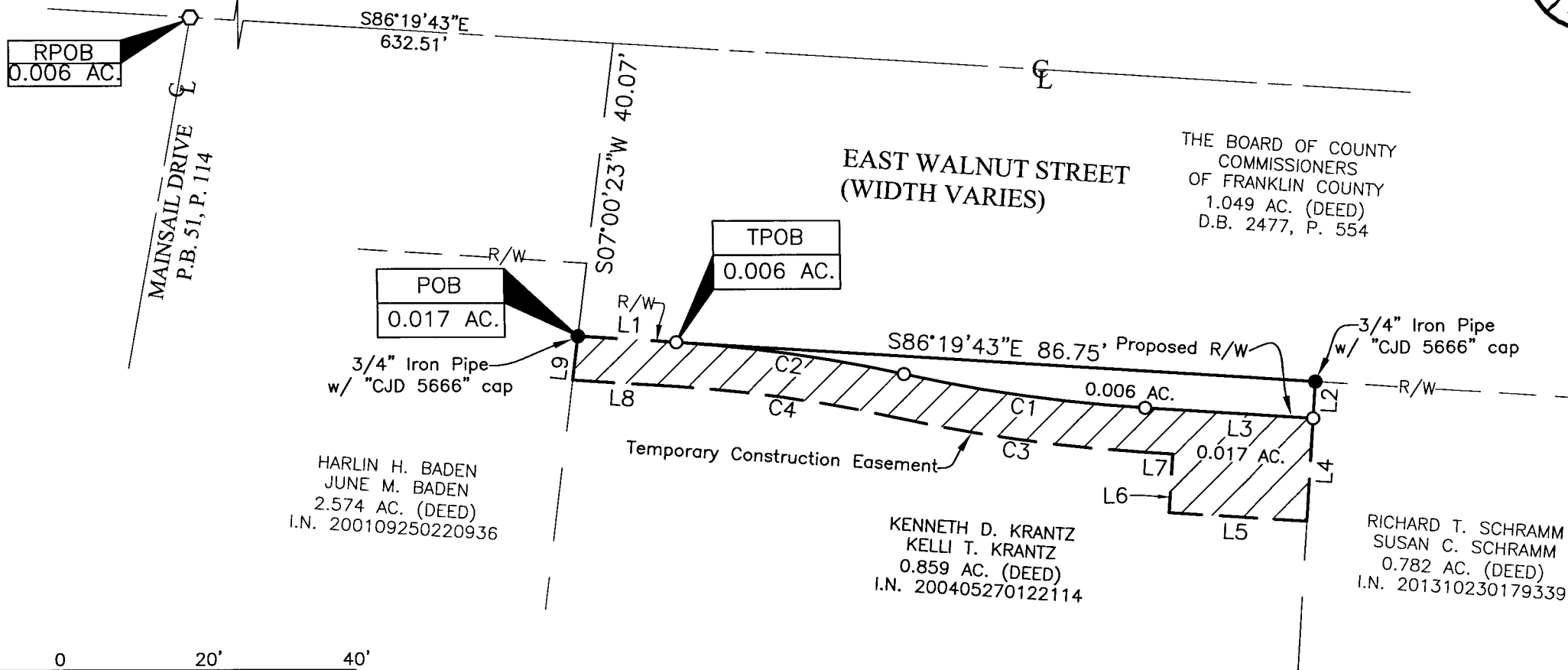
CITY OF WESTERVILLE, COUNTY OF FRANKLIN, STATE OF OHIO

Date: December 20, 2013

Scale: 1" = 20'

Job No. 2012-0480

1/2



THE BOARD OF COUNTY COMMISSIONERS OF FRANKLIN COUNTY
 1.049 AC. (DEED)
 D.B. 2477, P. 554

HARLIN H. BADEN
 JUNE M. BADEN
 2.574 AC. (DEED)
 I.N. 200109250220936

KENNETH D. KRANTZ
 KELLI T. KRANTZ
 0.859 AC. (DEED)
 I.N. 200405270122114

RICHARD T. SCHRAMM
 SUSAN C. SCHRAMM
 0.782 AC. (DEED)
 I.N. 201310230179339



GRAPHIC SCALE (in feet)

J:\20120480\DWG\04SHEETS\BOUNDARY\TEMP. CONSTRUCTION EASEMENTS\20120480-VS-ESMT-DEED#97.DWG plotted by GEIGER, STEVEN on 12/23/2013 1:14:23 PM last saved by SGEIGER on 12/23/2013 1:14:12 PM

Xrefs:

RECEIVED

JAN 17 2014

Franklin County Engineer
 Dean C. Rinkle, P.E., P.S.



Evans, Mechwart, Hambleton & Tilton, Inc.
 Engineers • Surveyors • Planners • Scientists
 5500 New Albany Road, Columbus, OH 43054
 Phone: 614.775.4500 Toll Free: 888.775.3648
 emht.com

SURVEY OF ACREAGE PARCEL

LOT 7, QUARTER TOWNSHIP 1, TOWNSHIP 2, RANGE 17

UNITED STATES MILITARY LANDS

CITY OF WESTERVILLE, COUNTY OF FRANKLIN, STATE OF OHIO

Date: December 20, 2013

Scale: 1" = 20'

Job No. 2012-0480

2/2

Line Table

Line Number	Direction	Length
L1	S86°19'43"E	13.17'
L2	S03°40'17"W	5.00'
L3	N86°19'43"W	22.91'
L4	S03°40'17"W	14.00'
L5	N86°19'43"W	18.81'
L6	N03°40'17"E	8.00'
L7	N86°19'43"W	4.11'
L8	N86°19'43"W	13.52'
L9	N07°00'23"E	6.01'

SURVEY NOTE:

This survey was prepared using documents of record, prior plats of survey, and observed evidence located by an actual field survey.

BASIS OF BEARINGS:

The bearings shown on this plat are based on the Ohio State Plane Coordinate System, South Zone, NAD83 (NSRS2007). Said bearings originated from a field traverse which was tied (referenced) to said coordinate system by GPS observations and observations of selected Franklin County Geodetic Survey Monuments HOOVERAZIMUTH and HOOVER. The portion of the centerline of South Hempstead Road, having a bearing of North 27°10'35" East, is designated the "basis of bearing" for this survey.

Curve Table

Curve Number	Delta	Radius	Length	Chord Bearing	Chord Distance
C1	8°57'26"	211.00'	32.99'	N81°51'00"W	32.95'
C2	8°57'26"	199.00'	31.11'	N81°51'00"W	31.08'
C3	8°57'26"	217.00'	33.92'	N81°51'00"W	33.89'
C4	8°57'26"	193.00'	30.17'	N81°51'00"W	30.14'

● = I.P. FND.

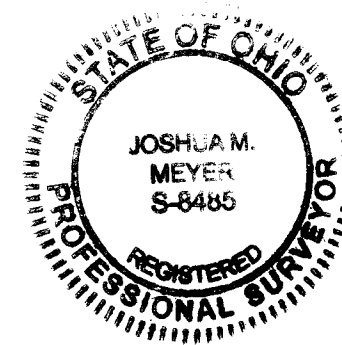
○ = I.P. SET

I.P. Set are 13/16" I.D. iron pipe with cap inscribed EMHT INC

RECEIVED

JAN 17 2014

Franklin County Engineer
 Dean C. Ringle, P.E., P.S.



By *J. M. Meyer*

Joshua M. Meyer
 Professional Surveyor No. 8485

12-23-2013

Date