

I-1-c



Evans, Mechwart, Hambleton & Tilton, Inc.
Engineers • Surveyors • Planners • Scientists
5500 New Albany Road, Columbus, OH 43054
Phone: 614.775.4500 Toll Free: 888.775.3648
emht.com

SURVEY OF ACREAGE PARCEL

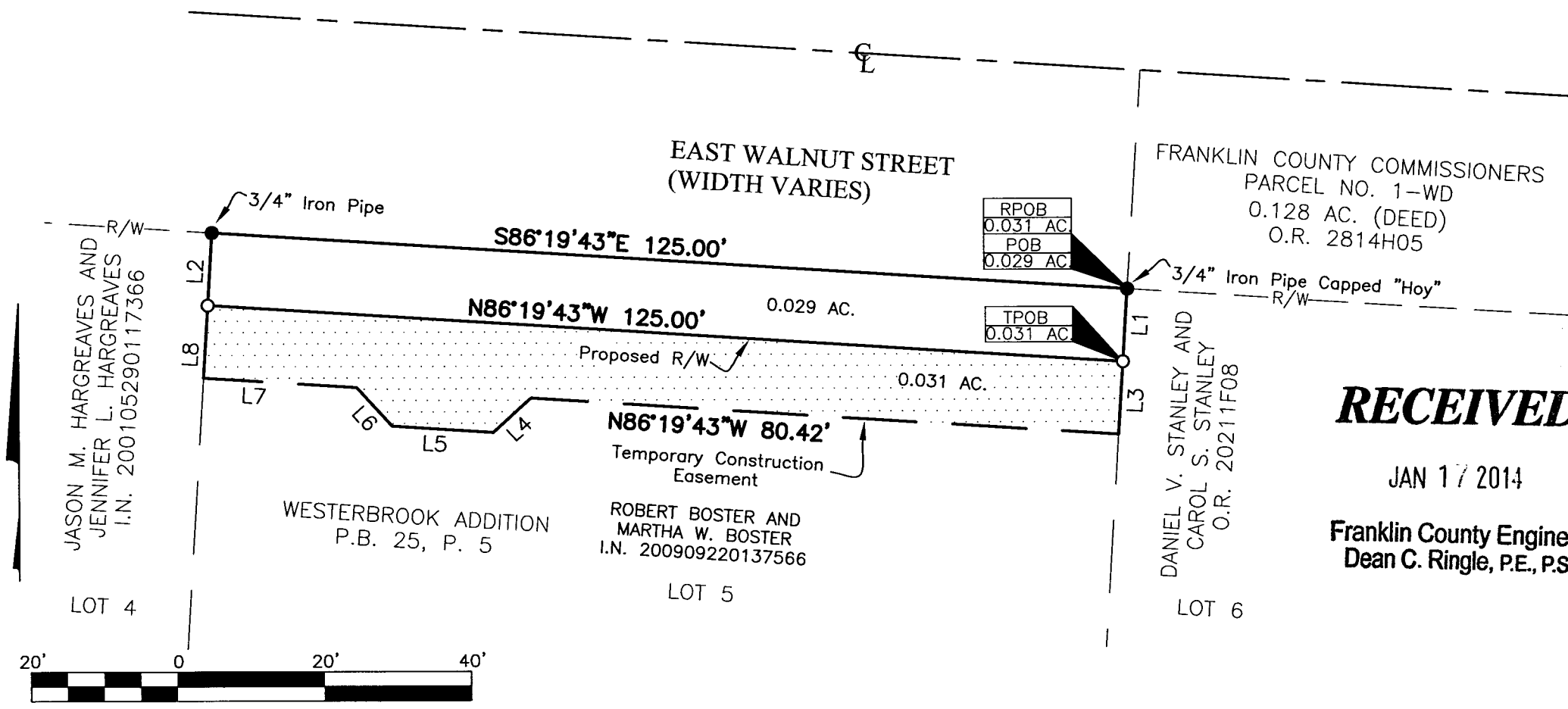
QUARTER TOWNSHIP 1, TOWNSHIP 2, RANGE 17
UNITED STATES MILITARY LANDS
CITY OF WESTERVILLE, COUNTY OF FRANKLIN, STATE OF OHIO

Date: December 13, 2013

Scale: 1" = 20'

Job No. 2012-0480

1/2



GRAPHIC SCALE (in feet)

RECEIVED

JAN 17 2014

Franklin County Engineer
Dean C. Ringle, P.E., P.S.

I-1-C



Evans, Mechwart, Hambleton & Tilton, Inc.
Engineers • Surveyors • Planners • Scientists
5500 New Albany Road, Columbus, OH 43054
Phone: 614.775.4500 Toll Free: 888.775.3648
emht.com

SURVEY OF ACREAGE PARCEL

QUARTER TOWNSHIP 1, TOWNSHIP 2, RANGE 17

UNITED STATES MILITARY LANDS

CITY OF WESTERVILLE, COUNTY OF FRANKLIN, STATE OF OHIO

Date: December 13, 2013

Scale: 1" = 20'

Job No. 2012-0480

2/2

Line Table

Line Number	Direction	Length
L1	S03°32'17"W	10.00'
L2	N03°32'17"E	10.00'
L3	S03°32'17"W	10.00'
L4	S47°36'47"W	6.94'
L5	N86°19'43"W	13.80'
L6	N41°58'28"W	7.15'
L7	N86°19'43"W	20.85'
L8	N03°32'17"E	10.00'

SURVEY NOTE:

This survey was prepared using documents of record, prior plats of survey, and observed evidence located by an actual field survey.

BASIS OF BEARINGS:

The bearings shown on this plat are based on the Ohio State Plane Coordinate System, South Zone, NAD83 (NSRS2007). Said bearings originated from a field traverse which was tied (referenced) to said coordinate system by GPS observations and observations of selected Franklin County Geodetic Survey Monuments HOOVERAZIMUTH and HOOVER. The portion of the centerline of South Hempstead Road, having a bearing of North 27°10'35" East, is designated the "basis of bearing" for this survey.

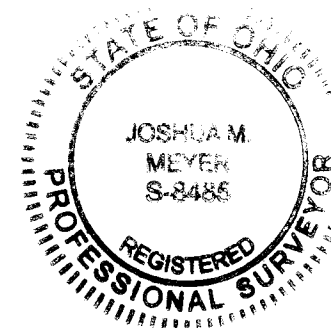
- = STONE FND.
- = MON. FND.
- = I.P. FND.
- = I.P. SET
- = MAG. NAIL FND.
- = MAG. NAIL SET
- ▲ = R.R. SPK. FND.
- △ = R.R. SPK. SET
- ◆ = P.K. NAIL FND.

I.P. Set are 13/16" I.D. iron pipe with cap inscribed EMHT INC

RECEIVED

JAN 17 2014

Franklin County Engineer
Dean C. Ringle, P.E., P.S.



By

Joshua M. Meyer
Professional Surveyor No. 8485

12-13-2013

Date