

I-1-0



Evans, Mechwart, Hambleton & Tilton, Inc.  
Engineers • Surveyors • Planners • Scientists  
5500 New Albany Road, Columbus, OH 43054  
Phone: 614.775.4500 Toll Free: 888.775.3648

emht.com

# SURVEY OF ACREAGE PARCEL

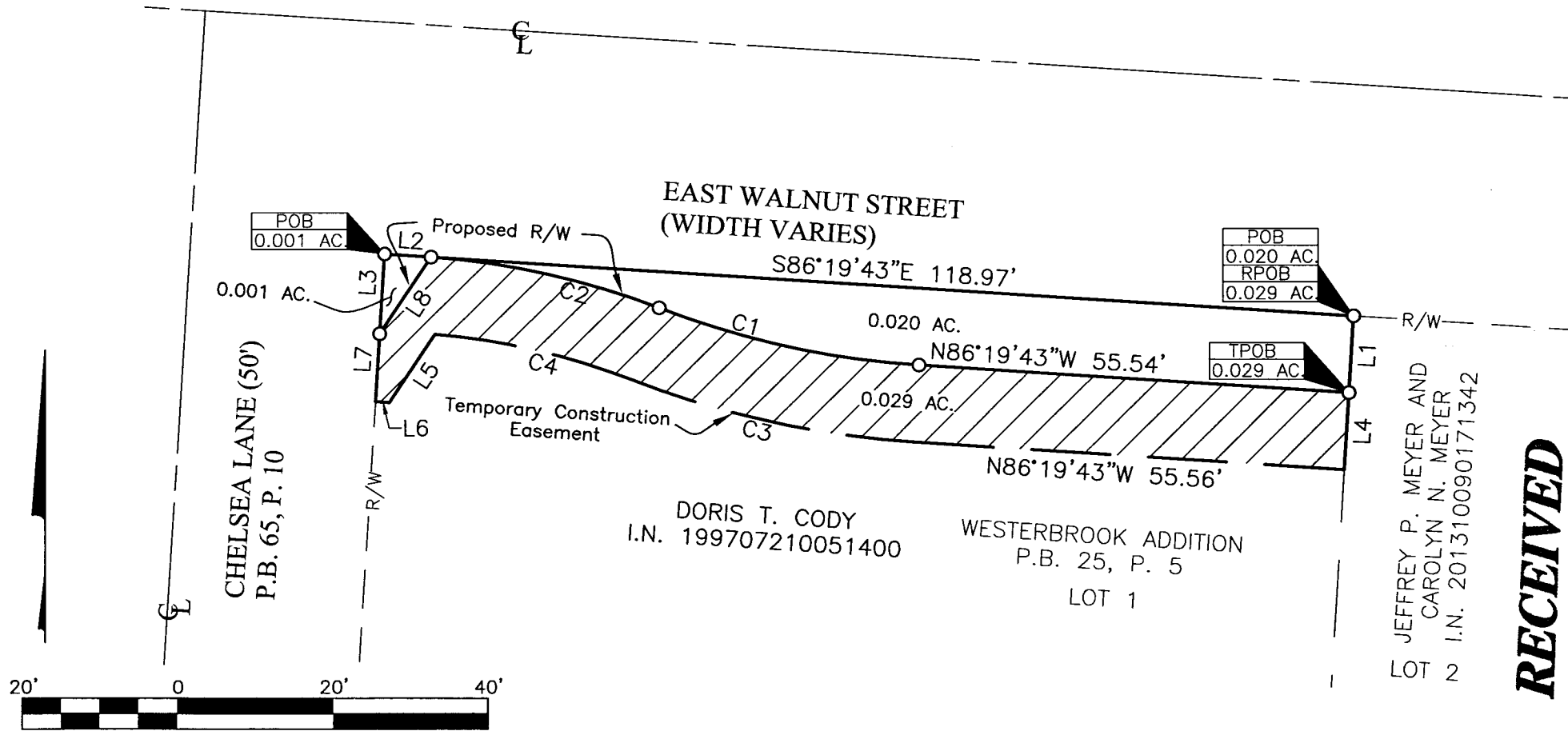
QUARTER TOWNSHIP 1, TOWNSHIP 2, RANGE 17  
UNITED STATES MILITARY LANDS  
CITY OF WESTERVILLE, COUNTY OF FRANKLIN, STATE OF OHIO

Date: January 6, 2014

Scale: 1" = 20'

Job No. 2012-0480

1/2



JEFFREY P. MEYER AND  
CAROLYN N. MEYER  
LOT 2 I.N. 201310090171342

**RECEIVED**

JAN 17 2014

Franklin County Engineer  
Dean C. Ringle, P.E., P.S.

I-1-C



Evans, Mechwart, Hambleton & Tilton, Inc.  
 Engineers • Surveyors • Planners • Scientists  
 5500 New Albany Road, Columbus, OH 43054  
 Phone: 614.775.4500 Toll Free: 888.775.3648  
 emht.com

# SURVEY OF ACREAGE PARCEL

QUARTER TOWNSHIP 1, TOWNSHIP 2, RANGE 17  
 UNITED STATES MILITARY LANDS  
 CITY OF WESTERVILLE, COUNTY OF FRANKLIN, STATE OF OHIO

Date: January 6, 2014

Scale: 1" = 20'

Job No. 2012-0480

2/2

Line Table		
Line Number	Direction	Length
L1	S03°32'17"W	10.00'
L2	S86°19'43"E	6.03'
L3	N03°32'17"E	10.41'
L4	S03°32'17"W	10.00'
L5	S33°40'17"W	10.64'
L6	N86°27'43"W	1.81'
L7	N03°32'17"E	8.83'
L8	N33°40'17"E	12.02'

Curve Table					
Curve Number	Delta	Radius	Length	Chord Bearing	Chord Distance
C1	17°45'10"	111.00'	34.39'	S77°27'08"E	34.26'
C2	17°25'09"	99.00'	30.10'	S77°17'08"E	29.98'
C3	17°45'10"	121.00'	37.49'	S77°27'08"E	37.34'
C4	16°38'38"	89.00'	25.85'	N76°53'52"W	25.76'

- = STONE FND.
- = MON. FND.
- = I.P. FND.
- = I.P. SET
- = MAG. NAIL FND.
- = MAG. NAIL SET
- ▲ = R.R. SPK. FND.
- △ = R.R. SPK. SET
- ◆ = P.K. NAIL FND.

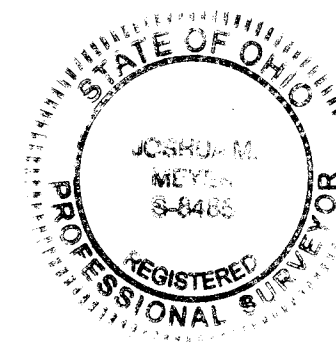
I.P. Set are 13/16" I.D. iron pipe with cap inscribed EMHT INC

**SURVEY NOTE:**

This survey was prepared using documents of record, prior plats of survey, and observed evidence located by an actual field survey.

**BASIS OF BEARINGS:**

The bearings shown on this plat are based on the Ohio State Plane Coordinate System, South Zone, NAD83 (NSRS2007). Said bearings originated from a field traverse which was tied (referenced) to said coordinate system by GPS observations and observations of selected Franklin County Geodetic Survey Monuments HOOVERAZIMUTH and HOOVER. The portion of the centerline of South Hempstead Road, having a bearing of North 27°10'35" East, is designated the "basis of bearing" for this survey.



By *J. M. Meyer*

Joshua M. Meyer  
 Professional Surveyor No. 8485

1-6-2014

Date

**RECEIVED**

JAN 17 2014

Franklin County Engineer