

J-9-A



Evans, Mechwart, Hambleton & Tilton, Inc.
Engineers • Surveyors • Planners • Scientists
5500 New Albany Road, Columbus, OH 43054
Phone: 614.775.4500 Toll Free: 888.775.3648
emht.com

SURVEY OF ACREAGE PARCEL

LOTS 29 & 30, QUARTER TOWNSHIP 4, TOWNSHIP 1, RANGE 16
UNITED STATES MILITARY LANDS
CITY OF COLUMBUS, COUNTY OF FRANKLIN, STATE OF OHIO

Date:	December 9, 2013
Scale:	1" = 100'
Job No.	2012-0150

SHEET 1 OF 4

BASIS OF BEARINGS:

The bearings shown on this survey are based on the Ohio State Plane Coordinate System, South Zone, NAD83 (1986 adj.). Said bearings originated from a field traverse which was referenced to said coordinate system by GPS observations and observations of selected Franklin County monuments: A-13 RESET, FCGS 6612, FCGS 6640, and FCGS 4425. The portion of the centerline of Blacklick Ridge Boulevard (P.B. 90, PP. 91 & 92), having a bearing of South 80° 10' 54" East, is designated the "basis of bearing" for this survey.

SURVEY NOTE:

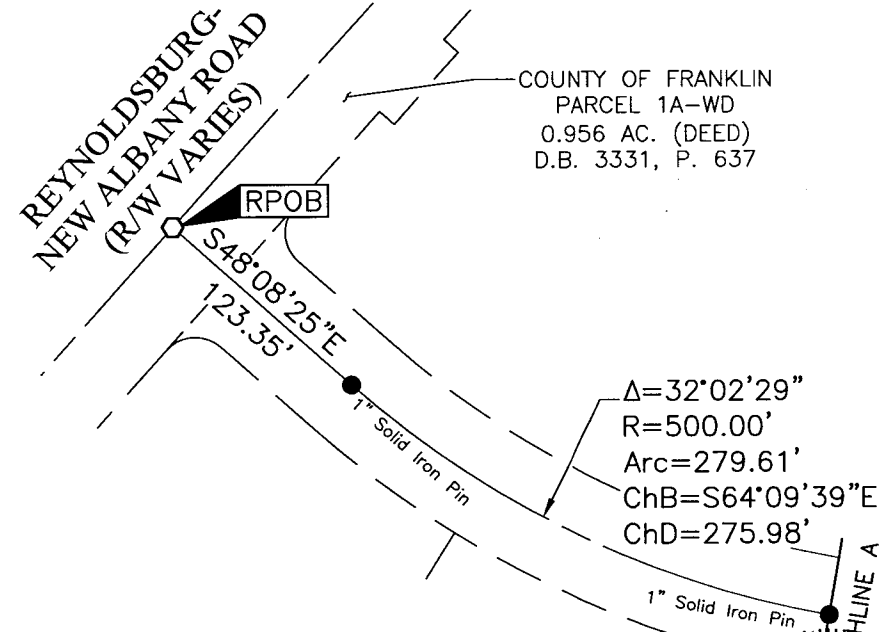
This survey was prepared using documents of record, prior plats of survey, and observed evidence located by an actual field survey performed under the direct supervision of Edward J. Miller, Professional Surveyor Number 8250, in August of 2012.

- = STONE FND.
- = MON. FND.
- = I.P. FND.
- = I.P. SET
- = MAG. NAIL FND.
- = MAG. NAIL SET
- ▲ = R.R. SPK. FND.
- △ = R.R. SPK. SET
- ◆ = P.K. NAIL FND.

I.P. Set are 13/16" I.D. iron pipe with cap inscribed EMHT INC



GRAPHIC SCALE (in feet)

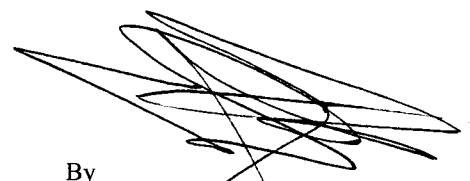


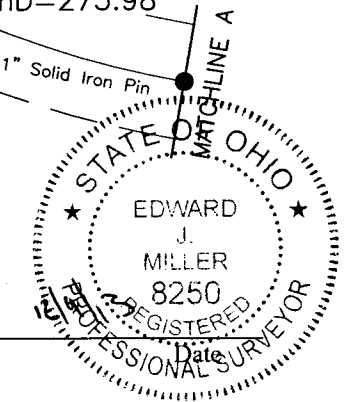
COUNTY OF FRANKLIN
PARCEL 1A-WD
0.956 AC. (DEED)
D.B. 3331, P. 637

RECEIVED

JAN 02 2011

Franklin County Engineer
Dean C. Ringle, P.E., P.S.

By 
Edward J. Miller
Professional Surveyor No. 8250





Evans, Mechwart, Hambleton & Tilton, Inc.
 Engineers • Surveyors • Planners • Scientists
 5500 New Albany Road, Columbus, OH 43054
 Phone: 614.775.4500 Toll Free: 888.775.3648

emht.com

SURVEY OF ACREAGE PARCEL

LOTS 29 & 30, QUARTER TOWNSHIP 4, TOWNSHIP 1, RANGE 16

UNITED STATES MILITARY LANDS

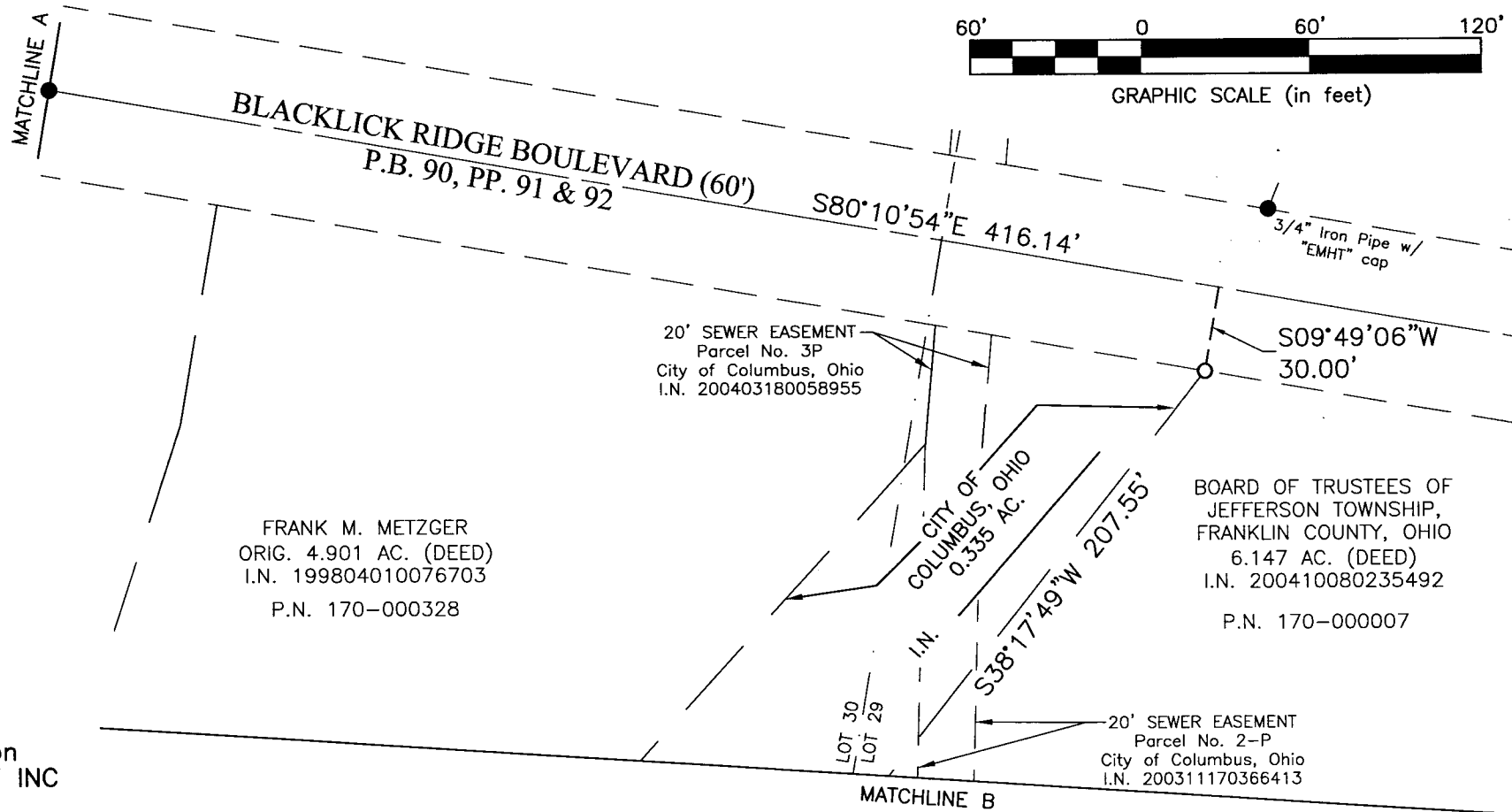
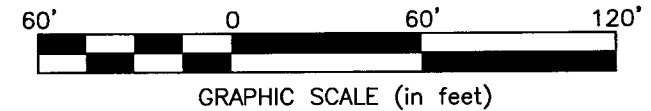
CITY OF COLUMBUS, COUNTY OF FRANKLIN, STATE OF OHIO

Date: December 9, 2013

Scale: 1" = 60'

Job No. 2012-0150

SHEET 2 OF 4



- = STONE FND.
- = MON. FND.
- = I.P. FND.
- = I.P. SET
- = MAG. NAIL FND.
- = MAG. NAIL SET
- ▲ = R.R. SPK. FND.
- △ = R.R. SPK. SET
- ◆ = P.K. NAIL FND.

I.P. Set are 13/16" I.D. iron pipe with cap inscribed EMHT INC

FRANK M. METZGER
 ORIG. 4.901 AC. (DEED)
 I.N. 199804010076703
 P.N. 170-000328

20' SEWER EASEMENT
 Parcel No. 3P
 City of Columbus, Ohio
 I.N. 200403180058955

CITY OF COLUMBUS, OHIO
 0.335 AC.

BOARD OF TRUSTEES OF JEFFERSON TOWNSHIP, FRANKLIN COUNTY, OHIO
 6.147 AC. (DEED)
 I.N. 200410080235492
 P.N. 170-000007

20' SEWER EASEMENT
 Parcel No. 2-P
 City of Columbus, Ohio
 I.N. 200311170366413



Evans, Mechwart, Hambleton & Tilton, Inc.
 Engineers • Surveyors • Planners • Scientists
 5500 New Albany Road, Columbus, OH 43054
 Phone: 614.775.4500 Toll Free: 888.775.3648

emht.com

SURVEY OF ACREAGE PARCEL

LOTS 29 & 30, QUARTER TOWNSHIP 4, TOWNSHIP 1, RANGE 16

UNITED STATES MILITARY LANDS

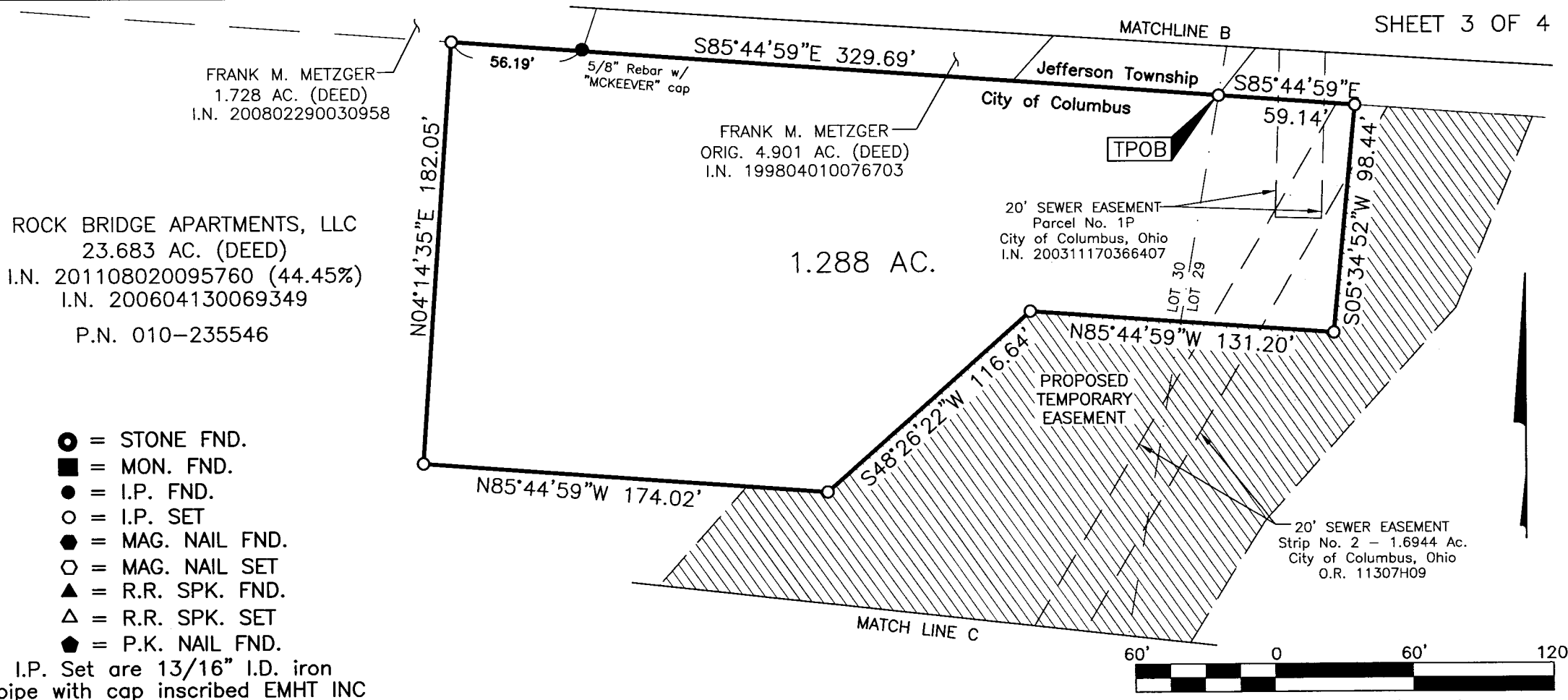
CITY OF COLUMBUS, COUNTY OF FRANKLIN, STATE OF OHIO

Date: December 9, 2013

Scale: 1" = 60'

Job No. 2012-0150

SHEET 3 OF 4



- = STONE FND.
- = MON. FND.
- = I.P. FND.
- = I.P. SET
- = MAG. NAIL FND.
- = MAG. NAIL SET
- ▲ = R.R. SPK. FND.
- △ = R.R. SPK. SET
- = P.K. NAIL FND.

I.P. Set are 13/16" I.D. iron pipe with cap inscribed EMHT INC



Evans, Mechwart, Hambleton & Tilton, Inc.
 Engineers • Surveyors • Planners • Scientists
 5500 New Albany Road, Columbus, OH 43054
 Phone: 614.775.4500 Toll Free: 888.775.3648
 emht.com

SURVEY OF ACREAGE PARCEL
 LOTS 29 & 30, QUARTER TOWNSHIP 4, TOWNSHIP 1, RANGE 16
 UNITED STATES MILITARY LANDS
 CITY OF COLUMBUS, COUNTY OF FRANKLIN, STATE OF OHIO

Date: December 9, 2013

Job No. 2012-0150

Scale: 1" = 60'

SHEET 4 OF 4

