



Evans, Mechwart, Hambleton & Tilton, Inc.  
 Engineers • Surveyors • Planners • Scientists  
 5500 New Albany Road, Columbus, OH 43054  
 Phone: 614.775.4500 Toll Free: 888.775.3648  
 emht.com

# SURVEY OF ACREAGE PARCEL

## HALF SECTION 8, TOWNSHIP 5, RANGE 22

### REFUGEE LANDS

**CITY OF GRANDVIEW HEIGHTS, COUNTY OF FRANKLIN, STATE OF OHIO**

Date: November 17, 2013

Job No. 2013-0677

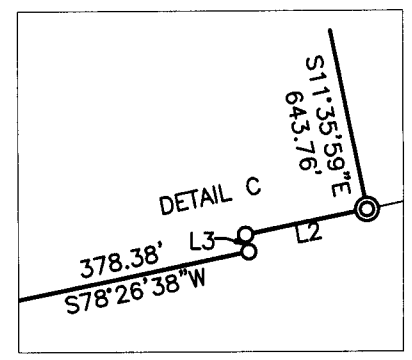
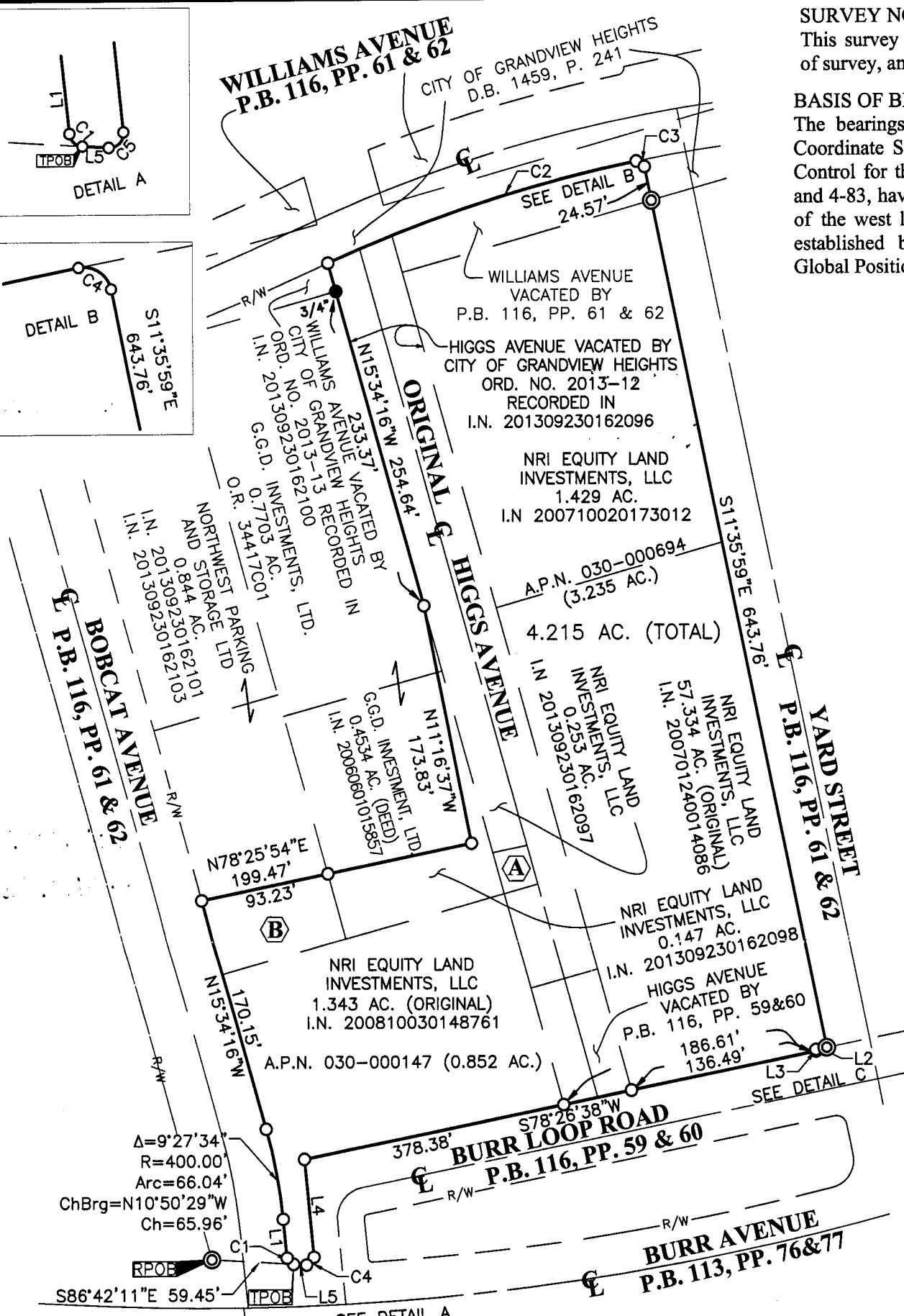
Scale: 1" = 100'

**SURVEY NOTE:**

This survey was prepared using documents of record, prior plats of survey, and observed evidence located by an actual field survey.

**BASIS OF BEARINGS:**

The bearings shown hereon are based on the Ohio State Plane Coordinate System South Zone as per NAD83 (1986 adjustment). Control for the bearings was from coordinates of monuments 5-83 and 4-83, having a bearing of North 00° 22' 10" West, for a portion of the west limited access right-of-way of Olentangy River Road, established by the Franklin County Engineering Department using Global Positioning System procedures and equipment.



Line Table		
Line Number	Direction	Length
L1	N06°06'42\"W	28.12'
L2	S78°34'44\"W	8.00'
L3	S10°24'35\"E	1.10'
L4	S05°50'56\"E	70.73'
L5	N86°42'11\"W	9.47'

- (A)** NRI EQUITY LAND INVESTMENTS, LLC  
 0.017 AC.  
 I.N. 201312090202297  
 A.P.N. 030-000288
- (B)** NRI EQUITY LAND INVESTMENTS, LLC  
 1.759 AC. (DEED)  
 I.N. 200810030148761  
 A.P.N. 030-001053 (0.111 AC.)

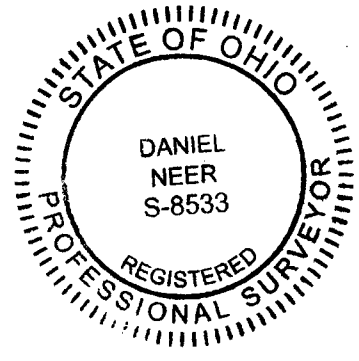
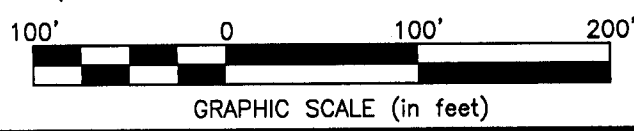
**RECEIVED**  
 DEC 10 2013

Franklin County Engineer  
 Dean C. Ringle, P.E., P.S.

Curve Table					
Curve Number	Delta	Radius	Length	Chord Bearing	Chord Distance
C1	80°35'29"	5.00'	7.03'	N46°24'27\"W	6.47'
C2	12°55'40"	1040.96'	234.87'	N72°15'41\"E	234.38'
C3	89°40'30"	5.00'	7.83'	S56°26'14\"E	7.05'
C4	99°08'45"	5.00'	8.65'	S43°43'26\"W	7.61'

- ⊙ = PERMANENT MARKER SET
- = MON. FND.
- = I.P. FND.
- = I.P. SET
- = MAG. NAIL FND.
- = MAG. NAIL SET
- ▲ = R.R. SPK. FND.
- △ = R.R. SPK. SET
- ◆ = P.K. NAIL FND.

I.P. Set are 13/16" I.D. iron pipe with cap inscribed EMHT INC  
 Permant Maker Set is a 1" solid iron pin with an aluminum punched top



By Daniel A. Neer 12/10/13  
 Daniel A. Neer Date  
 Professional Surveyor No. 8533

J:\20130677\DWG\04SHEET\BOUNDARY\20130677-VS-BNDY-4.DWG plotted by NEER, DANIEL on 12/10/2013 11:06:31 AM last saved by DNEER on 11/26/2013 11:42:20 AM