

G-6-C



1801 Watermark Drive, Suite 150
Columbus, OH 43215
614.210.0751 Fax 614.210.0752
Copyright: Glaus, Pyle, Schomer, Burns & DeHever, Inc. 2013

MONUMENT LEGEND

- I.R.F. IRON PIN FOUND
- I.R.S. 5/8" REBAR SET W/ ID CAP STAMPED "MULLANEY P.S. 7900"

BASIS OF BEARING:

BEARINGS ARE BASED ON THE BEARING BETWEEN FRANKLIN COUNTY ENGINEER'S STATIONS "FRANK33" AND "FRANK43" BEING S 26°38'00" E, AS MEASURED USING GPS METHODS AND THE OHIO STATE PLANE COORDINATE SYSTEM, SOUTH ZONE, NAD83 (1986 ADJUSTMENT).

EASEMENT RIGHT OF WAY DEMONSTRATION PLAT

SECTION 25, TOWNSHIP 5 NORTH, RANGE 22 WEST,
REFUGEE LANDS, CITY OF COLUMBUS
COUNTY OF FRANKLIN, STATE OF OHIO

RECEIVED

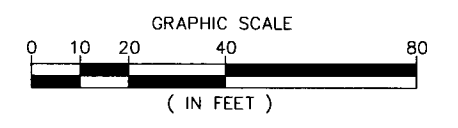
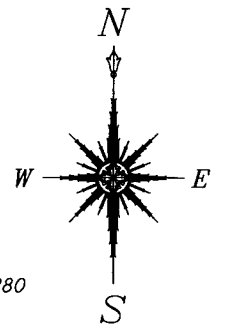
NOV 14 2013

Franklin County Engineer
Dean C. Ringle, P.E., P.S.

SECTION 24
SECTION 25
NORTHWESTERLY CORNER OF LOT 5
5/8" REBAR (FOUND)
AT N 35°02'15" W, 0.57'

COLUMBUS COMMERCE CENTER
P.B. 45, PG. 48

M.P. DORY CO.
010-218215
7.100 ACRES
INST. #200306020163280
LOT 5

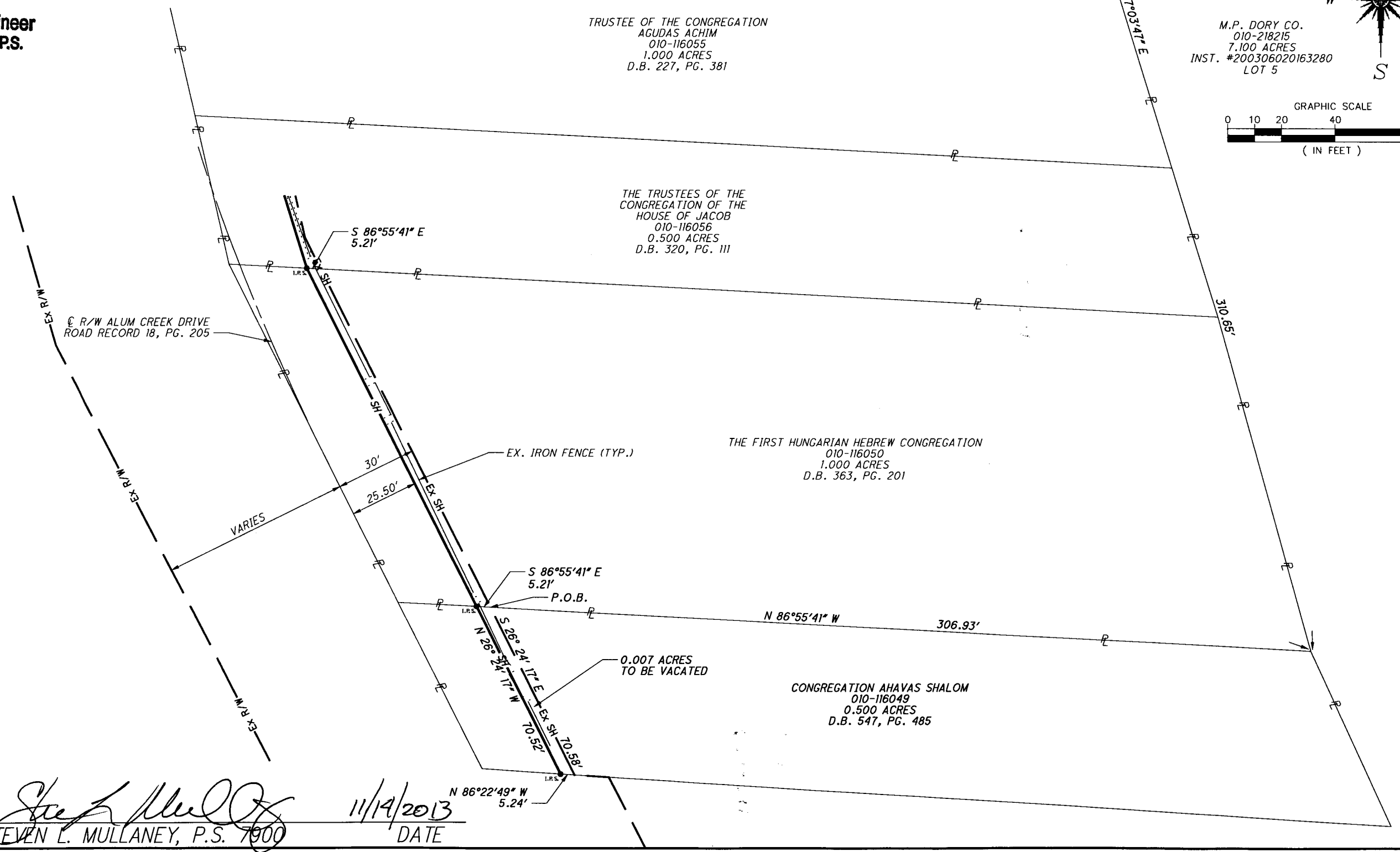


TRUSTEE OF THE CONGREGATION
AGUDAS ACHIM
010-116055
1.000 ACRES
D.B. 227, PG. 381

THE TRUSTEES OF THE
CONGREGATION OF THE
HOUSE OF JACOB
010-116056
0.500 ACRES
D.B. 320, PG. 111

THE FIRST HUNGARIAN HEBREW CONGREGATION
010-116050
1.000 ACRES
D.B. 363, PG. 201

CONGREGATION AHAVAS SHALOM
010-116049
0.500 ACRES
D.B. 547, PG. 485



Steven L. Mullaney
STEVEN L. MULLANEY, P.S. 7900

11/14/2013
DATE

\\Akrn04\Data\2013\2013944\FRA\85017\row\sheet\Vacation Plat 010-116049.dgn 11/13/2013 7:33:25 AM nconner