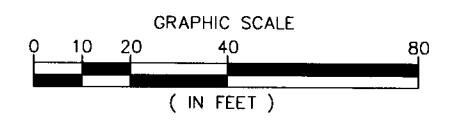
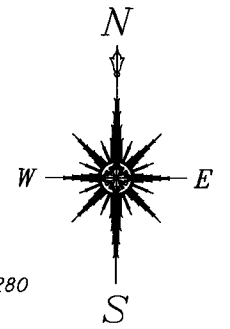


G-6-4



1801 Watermark Drive, Suite 150  
Columbus, OH 43215  
614.210.0751 Fax 614.210.0752  
Copyright: Glaus, Pyle, Schomer, Burns & DeHeaven, Inc. 2013



# EASEMENT RIGHT OF WAY DEMONSTRATION PLAT

SECTION 25, TOWNSHIP 5 NORTH, RANGE 22 WEST,  
REFUGEE LANDS, CITY OF COLUMBUS  
COUNTY OF FRANKLIN, STATE OF OHIO

**MONUMENT LEGEND**  
O.I.P.F. IRON PIN FOUND  
● I.P.S. 5/8" REBAR SET W/ ID CAP  
STAMPED "MULLANEY P.S. 7900"

**BASIS OF BEARING:**  
BEARINGS ARE BASED ON THE BEARING  
BETWEEN FRANKLIN COUNTY ENGINEER'S  
STATIONS "FRANK33" AND "FRANK43" BEING  
S 26°38'00" E, AS MEASURED USING GPS  
METHODS AND THE OHIO STATE PLANE  
COORDINATE SYSTEM, SOUTH ZONE, NAD83  
(1986 ADJUSTMENT).

**RECEIVED**

NOV 14 2013

Franklin County Engineer  
Dean C. Ringle, P.E., P.S.

TRUSTEE OF THE CONGREGATION  
AGUDAS ACHIM  
010-116055  
1.000 ACRES  
D.B. 227, PG. 381

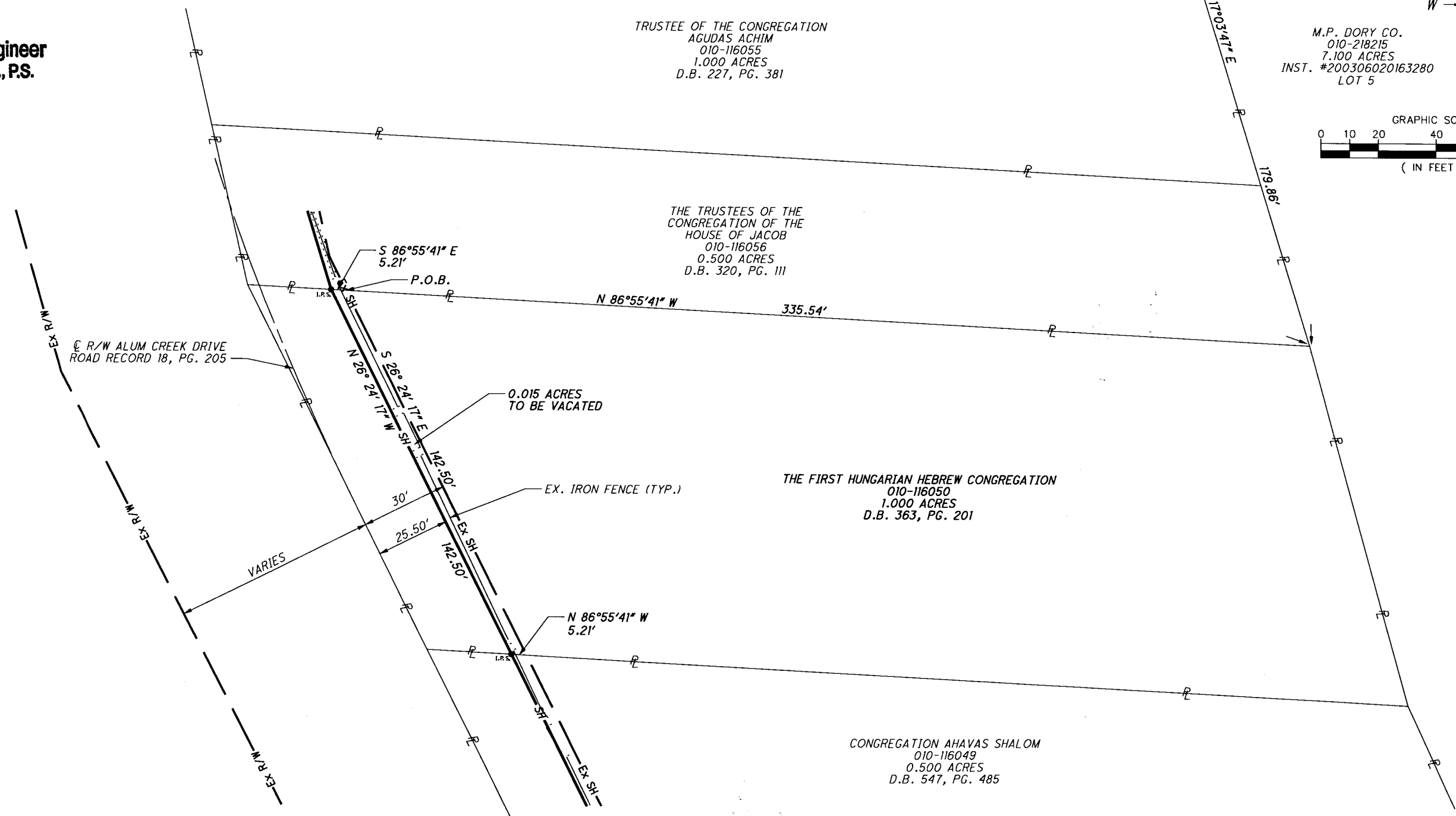
COLUMBUS COMMERCE CENTER  
P.B. 45, PG. 48

M.P. DORY CO.  
010-218215  
7.100 ACRES  
INST. #200306020163280  
LOT 5

THE TRUSTEES OF THE  
CONGREGATION OF THE  
HOUSE OF JACOB  
010-116056  
0.500 ACRES  
D.B. 320, PG. 111

THE FIRST HUNGARIAN HEBREW CONGREGATION  
010-116050  
1.000 ACRES  
D.B. 363, PG. 201

CONGREGATION AHAVAS SHALOM  
010-116049  
0.500 ACRES  
D.B. 547, PG. 485



*Steven L. Mullaney*  
STEVEN L. MULLANEY, P.S. 7900

11/14/2013  
DATE

\\Akm04\Data\2013\2013944\FRA\85017\row\sheet\Vacation Plat 010-116050.dgn 11/13/2013 7:38:02 AM ncorner