

G-6-C

MONUMENT LEGEND

- I.R.F. IRON PIN FOUND
- I.R.S. 5/8" REBAR SET W/ ID CAP STAMPED "MULLANEY P.S. 7900"

EASEMENT RIGHT OF WAY DEMONSTRATION PLAT

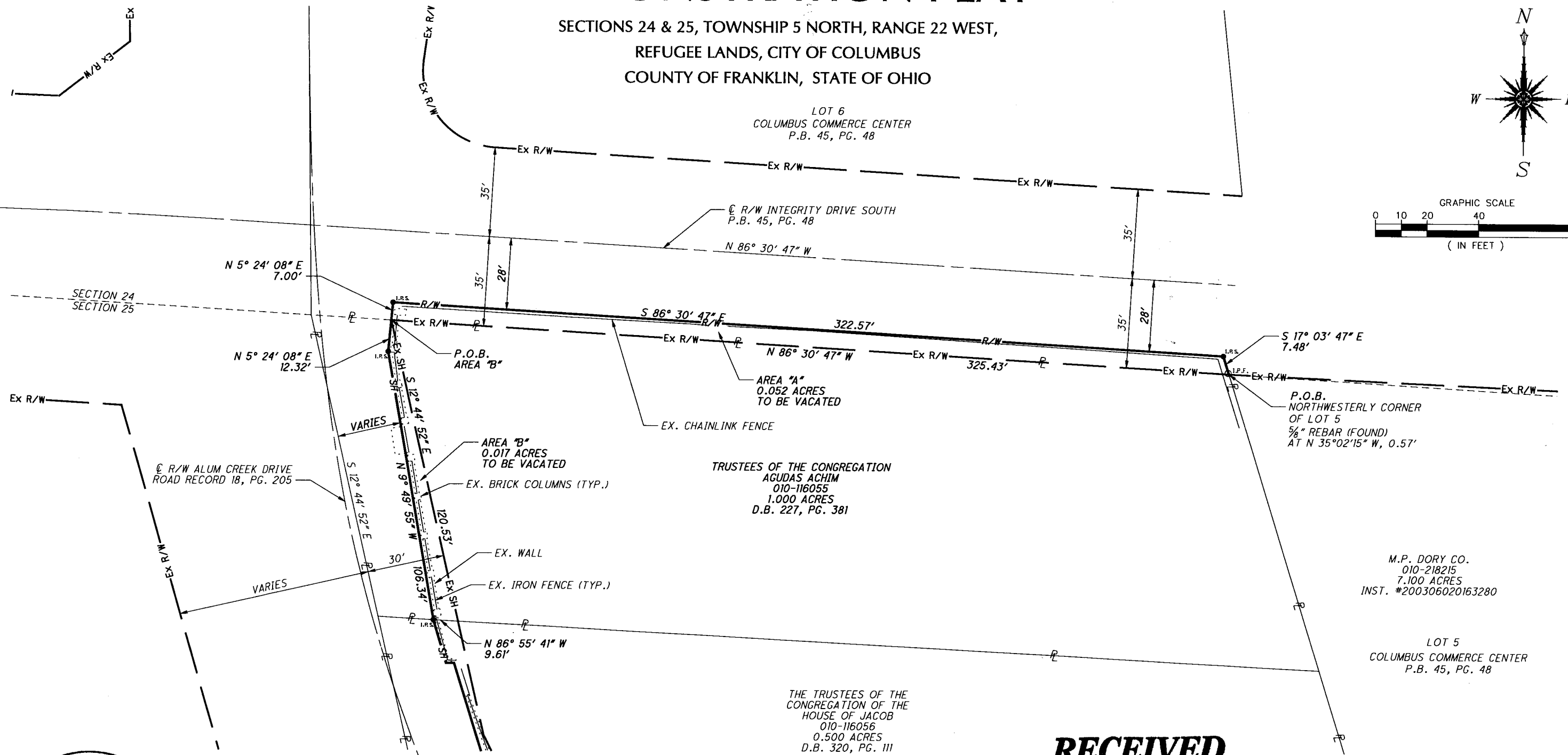
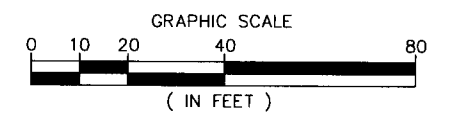
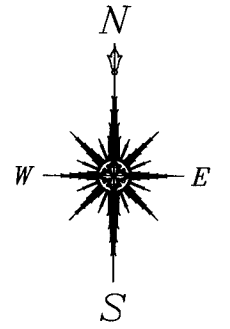
SECTIONS 24 & 25, TOWNSHIP 5 NORTH, RANGE 22 WEST,
REFUGEE LANDS, CITY OF COLUMBUS
COUNTY OF FRANKLIN, STATE OF OHIO

BASIS OF BEARING:

BEARINGS ARE BASED ON THE BEARING BETWEEN FRANKLIN COUNTY ENGINEER'S STATIONS "FRANK33" AND "FRANK43" BEING S 26°38'00" E, AS MEASURED USING GPS METHODS AND THE OHIO STATE PLANE COORDINATE SYSTEM, SOUTH ZONE, NAD83 (1986 ADJUSTMENT).



1801 Watermark Drive, Suite 150
Columbus, OH 43215
614.210.0751 Fax 614.210.0752
Copyright: Glaus, Pyle, Schomer, Burns & DeHeaven, Inc. 2013



\\akm04\data\2013\2013944\FRA\85017\row\sheet\Vacation Plat 010-116055.dgn 11/13/2013 7:42:12 AM ncorner



Steven L. Mullaney
STEVEN L. MULLANEY, P.S. 7900
11/14/2013
DATE

RECEIVED

NOV 14 2013

Franklin County Engineer
Dean C. Ringle, P.E., P.S.