

6-6-C

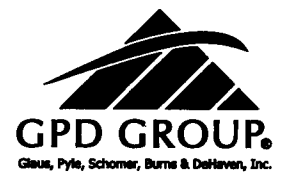
MONUMENT LEGEND

- I.R.F. IRON PIN FOUND
- I.R.S. 5/8" REBAR SET W/ ID CAP STAMPED "MULLANEY P.S. 7900"

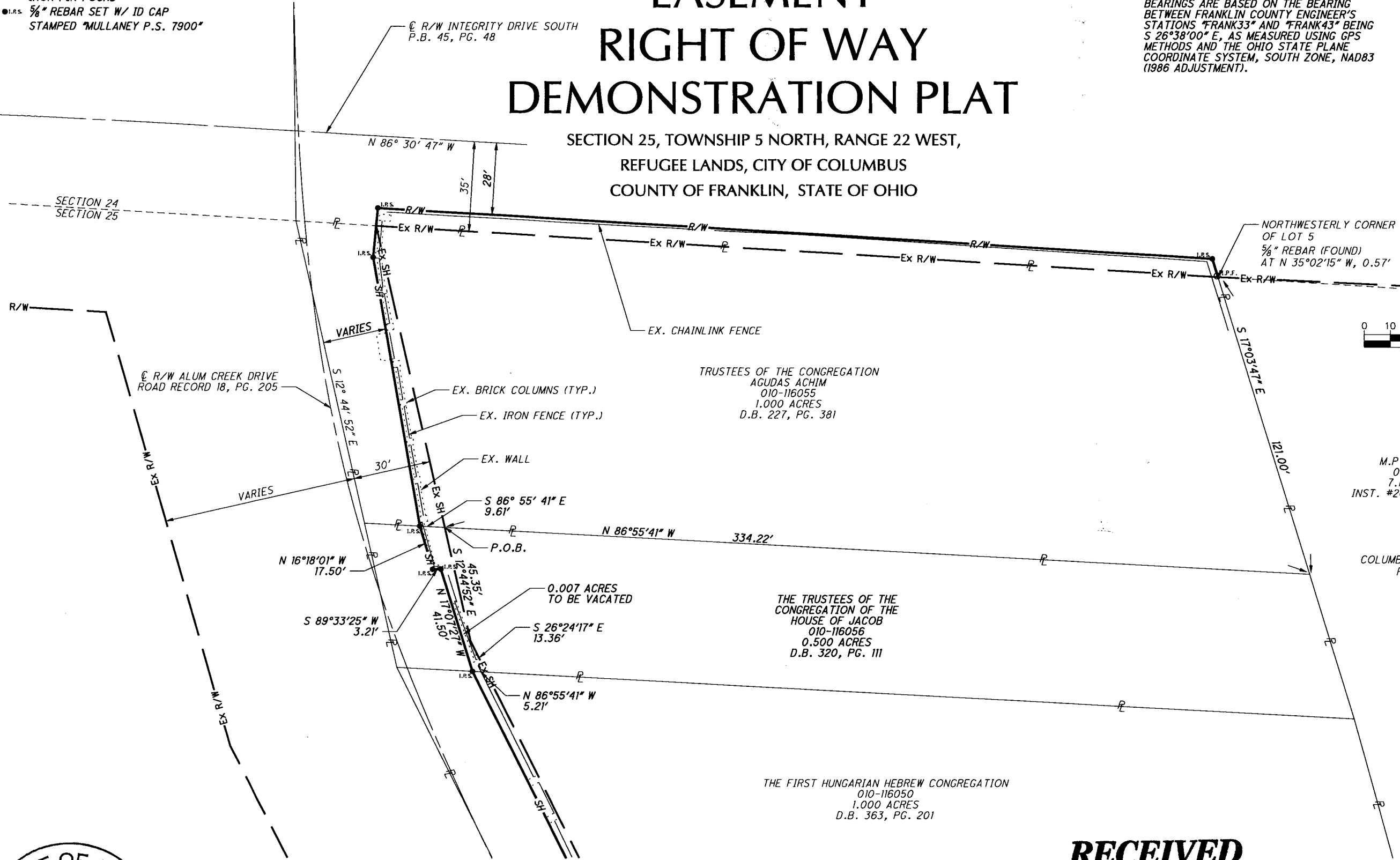
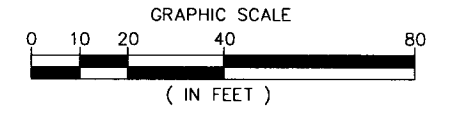
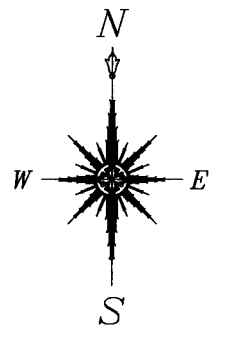
EASEMENT RIGHT OF WAY DEMONSTRATION PLAT

BASIS OF BEARING:

BEARINGS ARE BASED ON THE BEARING BETWEEN FRANKLIN COUNTY ENGINEER'S STATIONS "FRANK33" AND "FRANK43" BEING S 26°38'00" E, AS MEASURED USING GPS METHODS AND THE OHIO STATE PLANE COORDINATE SYSTEM, SOUTH ZONE, NAD83 (1986 ADJUSTMENT).



SECTION 25, TOWNSHIP 5 NORTH, RANGE 22 WEST,
REFUGEE LANDS, CITY OF COLUMBUS
COUNTY OF FRANKLIN, STATE OF OHIO



Steven L. Mullaney
STEVEN L. MULLANEY, P.S. 7900
11/13/2013
DATE

RECEIVED

NOV 14 2013

Franklin County Engineer
Dean C. Ringle, P.E., P.S.

O:\2013\2013944\FRA\85017\row\sheet\Vacation Plat 010-116056.dgn 11/13/2013 9:50:06 AM nconner