

G-7-D



Evans, Mechwart, Hambleton & Tilton, Inc. Engineers • Surveyors • Planners • Scientists 5500 New Albany Road, Columbus, OH 43054 Phone: 614.775.4500 Toll Free: 888.775.3648 emht.com

# SURVEY OF ACREAGE TRACT

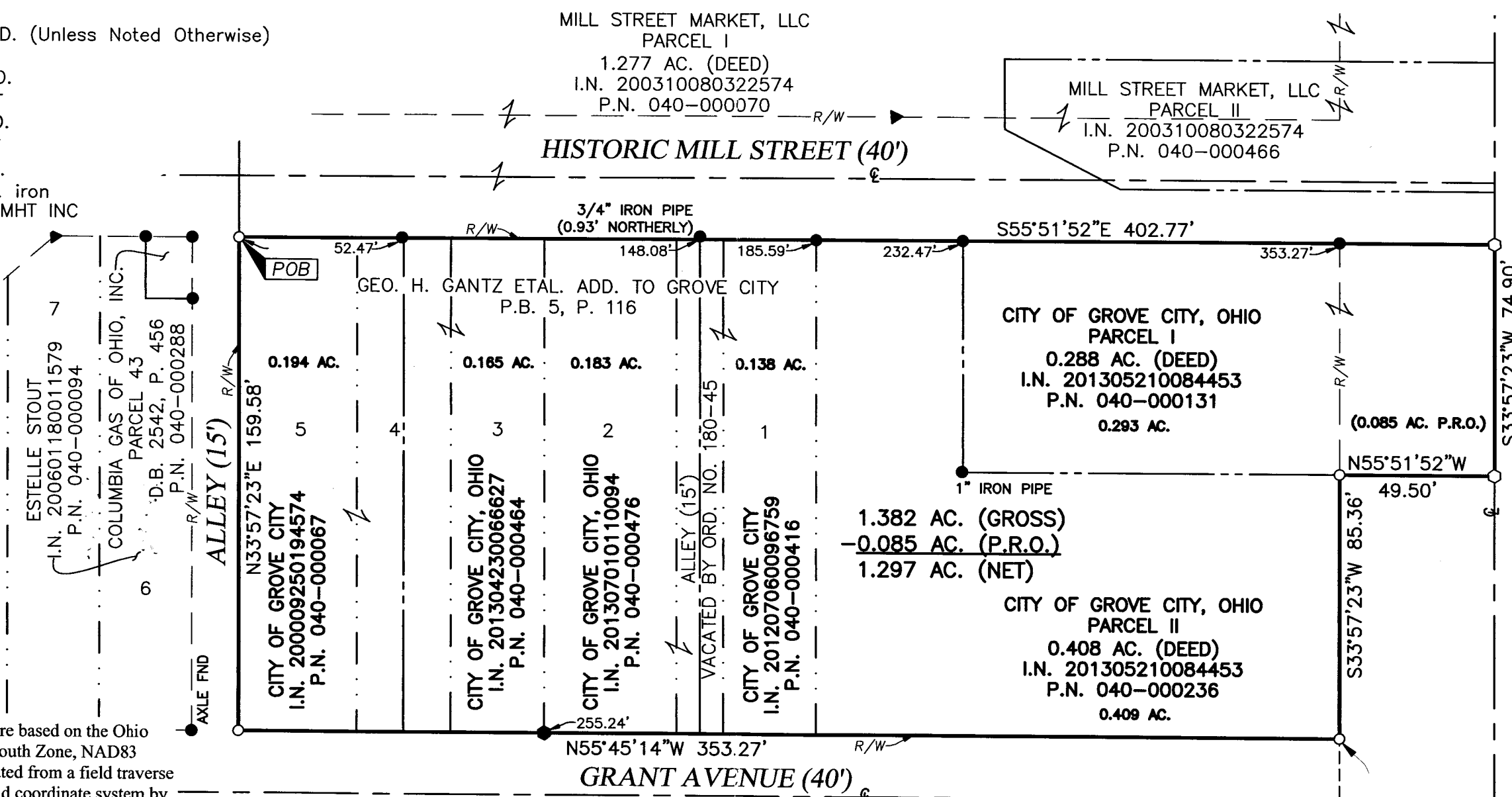
VIRGINIA MILITARY SURVEY NUMBER 1388  
VIRGINIA MILITARY SURVEY DISTRICT  
CITY OF GROVE CITY, COUNTY OF FRANKLIN, STATE OF OHIO

Date: November 4, 2013  
Scale: 1" = 40'  
Job No: 20131478

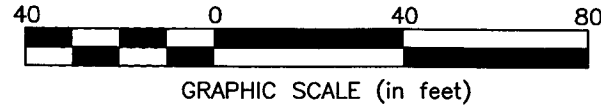
- = DRILL HOLE FND.
- = MON. FND.
- = 3/4" I.P. FND. (Unless Noted Otherwise)
- = I.P. SET
- ◆ = MAG. NAIL FND.
- = MAG. NAIL SET
- ▲ = R.R. SPK. FND.
- △ = R.R. SPK. SET
- ◆ = P.K. NAIL FND.

I.P. Set are 13/16" I.D. iron pipe with cap inscribed EMHT INC

I:\2013\1478\DWG\CASHIERS\BOUNDARY\20131478-VS-BNDY-01.DWG plotted by MEYER, JOSH on 11/4/2013 12:23:05 PM last saved by JMeyer on 11/4/2013 12:22:29 PM

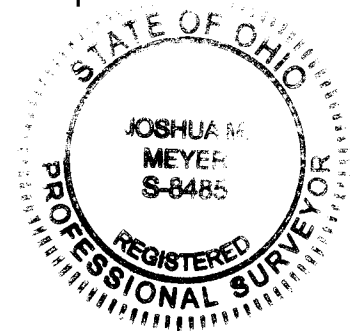


**BASIS OF BEARINGS:**  
The bearings shown on this plat are based on the Ohio State Plane Coordinate System, South Zone, NAD83 (CORS96). Said bearings originated from a field traverse which was tied (referenced) to said coordinate system by GPS observations and observations of selected CORS base stations in the National Spatial Reference System. The portion of the southerly right-of-way line of Mill Street, having a bearing of South 55° 51' 52" East and monumented as shown hereon, is designated the "basis of bearing" for this survey.



**SURVEY NOTE:**  
This survey was prepared using documents of record, prior plats of survey, and observed evidence located by an actual field survey in May 2002, June 2010, and October 2013.

By *J. M. Meyer* 11-4-2013  
Joshua M. Meyer  
Registered Surveyor No. 8485



**RECEIVED**  
NOV 05 2013  
Franklin County Engineer  
Dean C. Ringle, P.E., P.S.