

SURVEY OF ACREAGE PARCEL

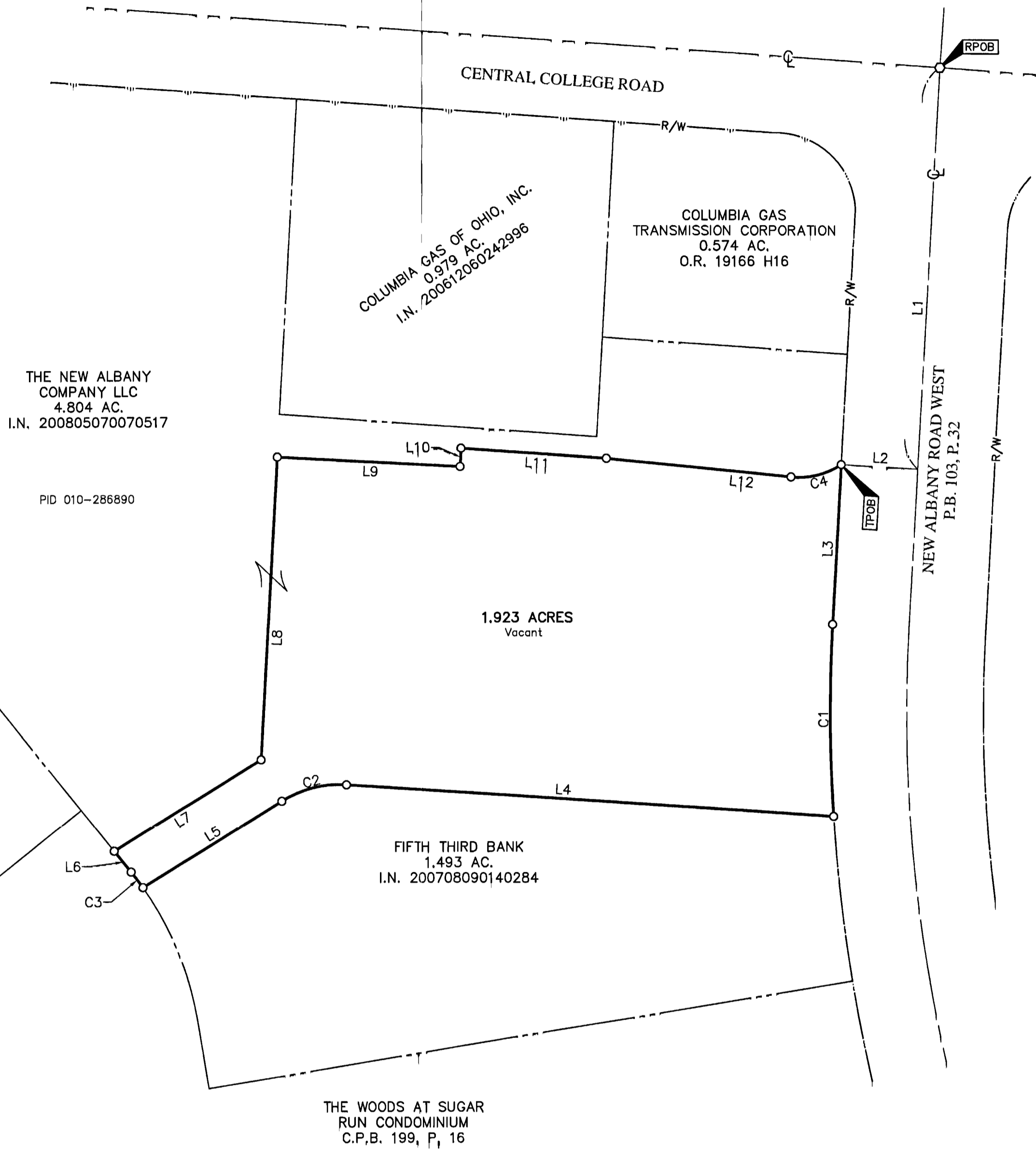
SECTION 14, QUARTER TOWNSHIP 2, TOWNSHIP 2, RANGE 16

UNITED STATES MILITARY LANDS

CITY OF COLUMBUS, COUNTY OF FRANKLIN, STATE OF OHIO

RECEIVED

OCT 24 2013
Franklin County Engineer
Dean C. Ringle, P.E., P.S.



Line Table		
Line Number	Direction	Length
L1	S03°13'41"W	261.19'
L2	N86°46'19"W	50.00'
L3	S03°13'41"W	103.78'
L4	N86°20'33"W	318.47'
L5	S58°11'29"W	106.30'
L6	N38°46'01"W	17.54'
L7	N58°11'29"E	112.43'
L8	N03°13'41"E	196.57'
L9	S87°02'13"E	120.00'
L10	N04°06'03"E	12.00'
L11	S85°59'39"E	94.61'
L12	S84°22'01"E	120.99'

Curve Table					
Curve Number	Delta	Radius	Length	Chord Bearing	Chord Distance
C1	6°48'20"	1050.00'	124.72'	S00°10'29"E	124.65'
C2	35°27'58"	72.25'	44.72'	S75°55'28"W	44.01'
C3	3°31'57"	205.00'	12.64'	N37°00'02"W	12.64'
C4	39°30'20"	50.00'	34.48'	N76°06'39"E	33.80'

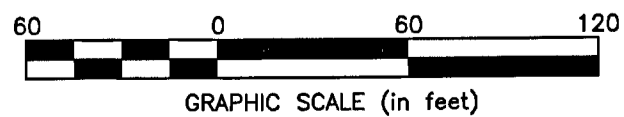
BASIS OF BEARINGS:
Bearings are based on the Ohio State Plane Coordinate System as per NAD83, South Zone (1986 Adjustment), Control for bearings was from coordinates of monuments Frank 5574 and Frank 5113, with Central College Road having a bearing of South 86° 09' 36" East, established by the Franklin County Engineering Department, using Global Positioning System procedures and equipment.

FEMA NOTE:
According to the Federal Emergency Management Agency's Flood Insurance Rate Map No. 39049C0202K (dated June 17, 2008), the subject tract shown hereon lies within Zone X (areas determined to be outside of the 0.2% annual chance floodplain).

SURVEY NOTE:
This survey was prepared using documents of record, prior plats of survey, and observable field evidence.

- ⊙ = PERMANENT MONUMENT
- = MON. FND.
- = I.P. FND.
- = I.P. SET
- = MAG. NAIL FND.
- = MAG. NAIL SET
- ▲ = R.R. SPK. FND.
- △ = R.R. SPK. SET
- ◆ = P.K. NAIL FND.

I.P. Set are 13/16" I.D. iron pipe with cap inscribed EMHT INC. Permanent Monument set is a one-inch solid iron pin with punched top.



By *Heather L. King* 10/1/13
Heather L. King
Professional Surveyor No. 8307
Date

 Evans, Mechwart, Hambleton & Tilton, Inc. Engineers • Surveyors • Planners • Scientists 5500 New Albany Road, Columbus, OH 43054 Phone: 614.775.4500 Toll Free: 888.775.3648 emht.com	Date: September 27, 2013	
	Scale: 1" = 60'	
	Job No: 2013-0768	
	Sheet: 1 of 1	
REVISIONS		
MARK	DATE	DESCRIPTION
TNW	10/1/13	Correct Parcel Number