

**MONUMENT LEGEND**

- ⊙ P.F. 1/2" IRON PIPE FOUND
- I.R.S. 5/8" REBAR SET W/ ID CAP
- STAMPED "MULLANEY P.S. 7900"

# RIGHT OF WAY DEMONSTRATION PLAT



V.M.S. 2417, CITY OF HILLIARD,  
COUNTY OF FRANKLIN, STATE OF OHIO

1801 Watermark Drive, Suite 150  
Columbus, OH 43215  
614.210.0751 Fax 614.210.0752

Copyright; Glaus, Pyle, Schomer, Burns & DeHaven, Inc. 2013

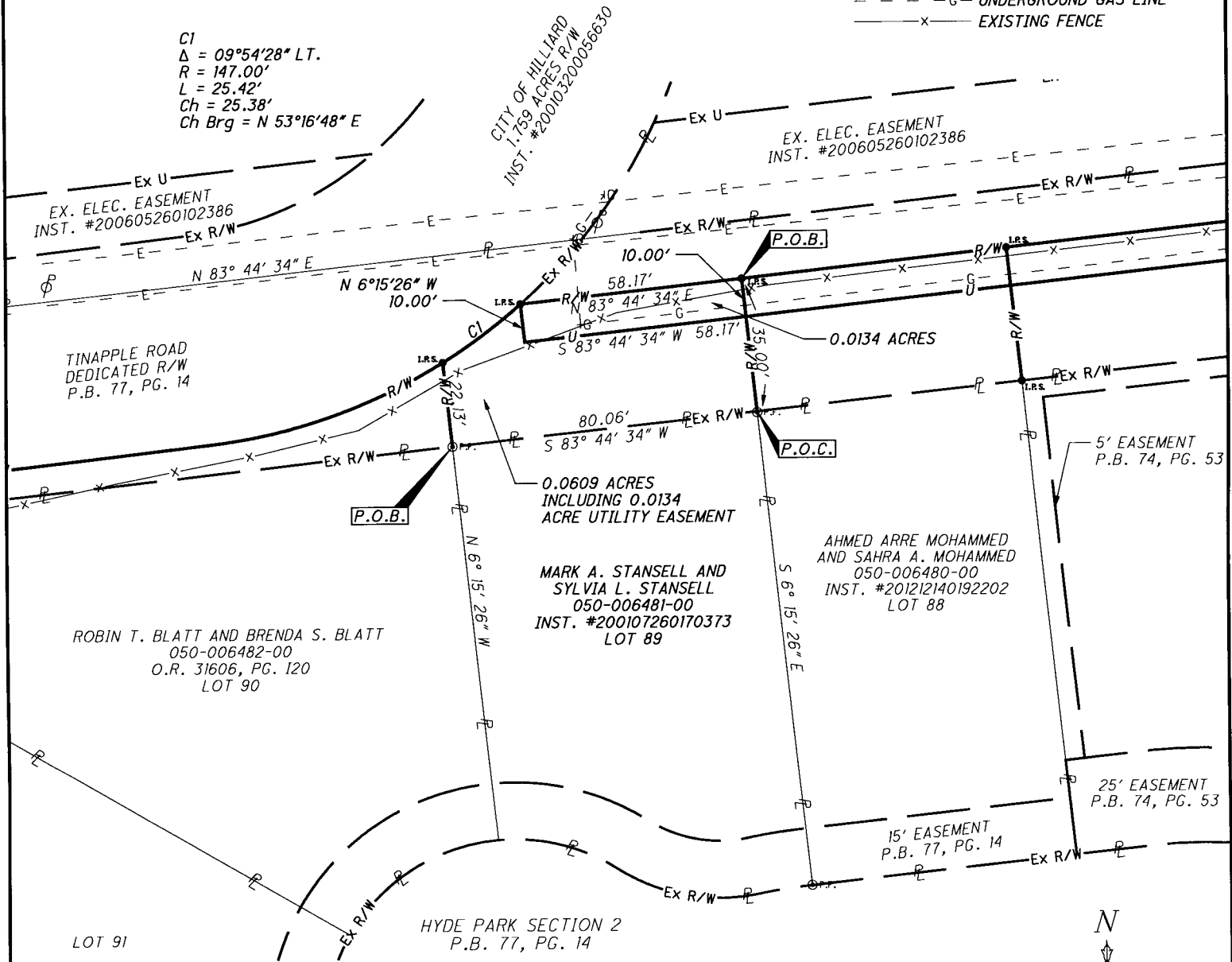
**BASIS OF BEARING:**

BEARINGS ARE BASED ON THE NORTH LINE OF HYDE PARK SECTION 2 BEING S 83°44'34" W, USING EXISTING MONUMENTS FOUND AND MEASURED USING GPS METHODS AND THE OHIO STATE PLANE COORDINATE SYSTEM, SOUTH ZONE, NAD83 (CORS96).

**LEGEND**

- - - - E - OVERHEAD ELECTRIC
- - - - G - UNDERGROUND GAS LINE
- x — EXISTING FENCE

CI  
Δ = 09°54'28" LT.  
R = 147.00'  
L = 25.42'  
Ch = 25.38'  
Ch Brg = N 53°16'48" E



ROBIN T. BLATT AND BRENDA S. BLATT  
050-006482-00  
O.R. 31606, PG. 120  
LOT 90

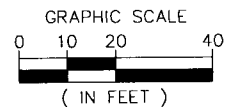
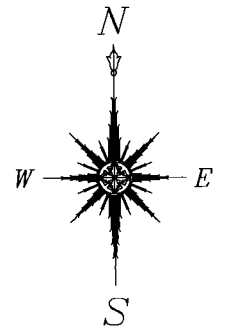
MARK A. STANSELL AND SYLVIA L. STANSELL  
050-006481-00  
INST. #200107260170373  
LOT 89

AHMED ARRE MOHAMMED AND SAHRA A. MOHAMMED  
050-006480-00  
INST. #201212140192202  
LOT 88

RECEIVED

DEC 09 2013

Franklin County Engineer  
Dean C. Ringle, P.E. P.S.



Steven L. Mullaney

STEVEN L. MULLANEY, P.S. 7900

12-6-2013  
DATE