

EXHIBIT OF A 10.395 ACRE TRACT

BEING A PART OF SECTION 20, TOWNSHIP 11 NORTH, RANGE 21 WEST,
 CONGRESS LANDS EAST OF THE SCIOTO
 CITY OF GROVEPORT, FRANKLIN COUNTY, OHIO
 INCLUDING HISTORIC HENDRON CEMETRY

CHARLES B. HANDA AND
 DIANE L. HANDA
 27.22 AC. TRACT
 INST. NO. 199709290104056



GRID NORTH



BASIS OF BEARINGS:

BEARINGS SHOWN HEREON ARE BASED ON THE BEARING OF (N05°23'56"E) AND IS BASED ON THE OHIO STATE COORDINATE SYSTEM SOUTH ZONE AND THE NORTH AMERICAN DATUM OF 1983 (NSRS 2007), AS ESTABLISHED FROM A GPS SURVEY PERFORMED BY THE FRANKLIN COUNTY ENGINEER'S SURVEY DEPARTMENT IN 2009, OCCUPYING MONUMENTS "HAMILTON" AND HAMILTON AZIMUTH".

THIS PLAT WAS PREPARED FROM AN ACTUAL FIELD SURVEY IN AUGUST AND SEPTEMBER 2012, BY THE FRANKLIN COUNTY ENGINEER'S OFFICE, ALONG WITH PUBLIC RECORDS ON FILE IN THE FRANKLIN COUNTY RECORDER'S OFFICE AND THE FRANKLIN COUNTY ENGINEER'S OFFICE.

David L. Pearson
 DAVID L. PEARSON
 OHIO REGISTERED SURVEYOR NO. 7298

9/19/2012
 DATE



LOT 2
 KTR OHIO LLC, A DELAWARE
 LIMITED LIABILITY COMPANY
 LOT 2
 INST. NO. 201111300155604

GREEN POINTE BUSINESS PARK
 PHASE 2

P.B. 92, PG'S. 48 & 49

LOT 3
 MERITEX COLUMBUS INDUSTRIAL
 I, LLC, A MINNESOTA LIMITED
 LIABILITY COMPANY
 LOT 3
 INST. NO. 200512290273736

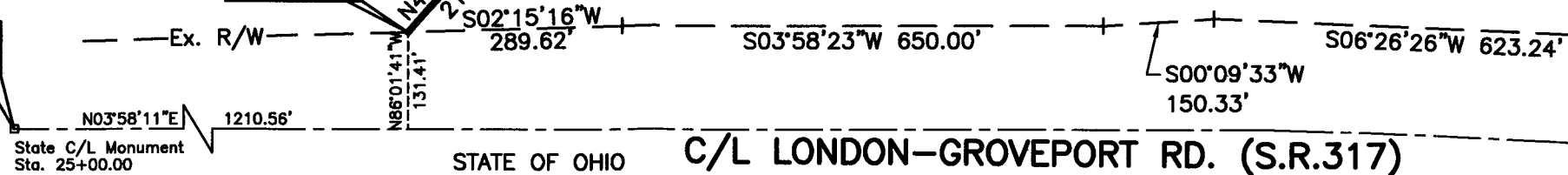
THE VILLAGE OF GROVEPORT
 31.909 AC. TRACT
 INST. NO. 199911090281895

PATRICIA J. LEWIS, TRUSTEE OF THE
 TRUST AGREEMENT OF PATRICIA J. LEWIS
 DATED NOVEMBER 13, 2009
 48.468 AC. TRACT
 INST. NO. 200911170165452

5710 GREEN POINTE CONDOMINIUM, LOT 7
 AS DECLARED IN INSTRUMENT
 NO. 200507080134444
 AND SHOWN IN
 CPB 151, PG. 55

PLACE OF
 REFERENCE

PLACE OF
 BEGINNING



STATE OF OHIO
 15.546 AC. TRACT
 D.B. 3339, PG. 684

C/L LONDON-GROVEPORT RD. (S.R.317)

STATE OF OHIO
 4.920 AC. TRACT
 D.B. 3282, PG. 175

DATE: 09/19/12		DRAWING: GROVE CONS	
		DRAWN BY: DKT	
REVISIONS			
DATE	DESCRIPTION	BY	